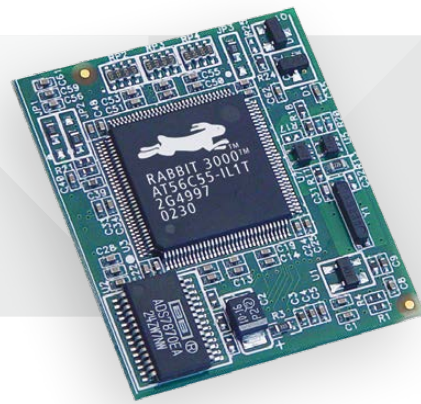




MICROPROCESSOR
CORE MODULE



DIGI RABBITCORE RCM3400 SERIES

The compact, analog-enabled RabbitCore is designed for embedded applications that require analog functionality

The RabbitCore RCM3400 series, featuring the Rabbit® 3000 microprocessor, is designed for embedded control and monitoring applications requiring analog functionality. Its small size and ease of use when paired with Dynamic C® allow engineers to develop a control and monitoring solution for many of today's embedded applications.

The Ethernet-ready RCM3400 series comes pre-assigned with a MAC ID, along with a development board 10Base-T reference design. Built-in low EMI features, including a clock spectrum spreader, practically eliminate EMI problems, helping to pass CE and RF emissions tests.

Rabbit hardware and Dynamic C are designed in a complementary fashion for maximum performance and ease of use in embedded systems. The additional software components in Dynamic C allow you to add functionality for embedded application customization.

BENEFITS

- Rabbit 3000 microprocessor at 30 MHz
- Up to 512K Flash/512K SRAM
- 8 channel 12-bit A/D with programmable gain
- 47 digital I/O and 5 serial ports (IrDA, HDLC, asynch, SPI)
- MAC ID installed
- Compact size simplifies integration
- Ready-made platform for fast time-to-market, up to 3 months of design integration time savings
- Low-cost embedded microprocessor module

RELATED PRODUCTS



RabbitCore®
RCM3000
Series



RabbitCore®
RCM3100
Series



RabbitCore®
RCM4300
Series

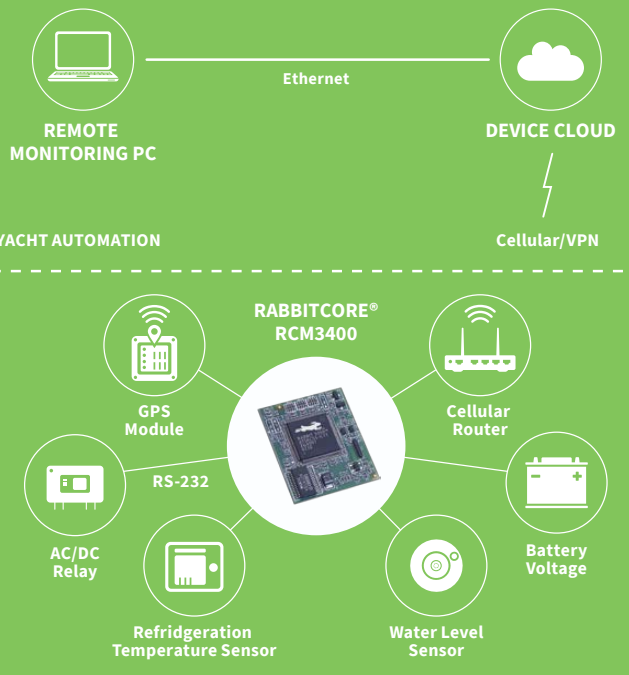


RabbitCore®
RCM3600
Series

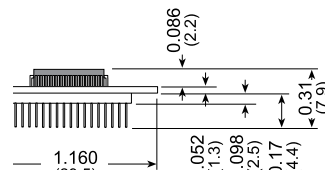
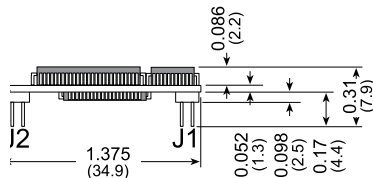
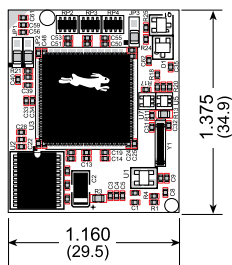


Dynamic C®

APPLICATION EXAMPLE



SPECIFICATIONS		RCM3400	RCM3410
FEATURE			
MICROPROCESSOR	Rabbit® 3000 at 30 MHz		
FLASH MEMORY	512K		256K
SRAM	512K		256K
BACKUP BATTERY	Connection for user-supplied backup battery (to support RTC and SRAM)		
ANALOG INPUTS - A/D CONVERTER RESOLUTION - A/D CONVERSION TIME (INCLUDING 120 MS RAW COUNT AND DYNAMIC C)	8 channels single-ended or 4 channels differential Programmable gain 1, 2, 4, 5, 8, 10, 16, and 20 V/V		
	12 bits (11 bits single-ended)		
	180 µs		
GENERAL-PURPOSE I/O	47 parallel digital I/O lines: <ul style="list-style-type: none"> • 41 configurable I/O • 3 fixed inputs • 3 fixed outputs 		
ADDITIONAL INPUTS	Startup mode (2), reset in, CONVERT		
ADDITIONAL OUTPUTS	Status, reset out, VREF		
AUXILIARY I/O BUS	Can be configured for 8 data lines and 6 address lines (shared with parallel I/O lines), plus I/O read/write		
SERIAL PORTS	5 shared high-speed, CMOS-compatible ports:		
	<ul style="list-style-type: none"> • All 5 configurable as asynchronous, 3 as clocked serial (SPI), and 2 as SDLC/HDLC • 1 asynchronous serial port dedicated for programming • Support for MIR/SIR IrDA transceiver 		
SERIAL RATE	Maximum asynchronous baud rate = CLK/8		
SLAVE INTERFACE	A slave port allows the RCM3400 to be used as an intelligent peripheral device slaved to a master processor, which may either be another Rabbit 3000 or any other type of processor		
REAL-TIME CLOCK	Yes		
TIMERS	Ten 8-bit timers (6 cascable), one 10-bit timer with 2 match registers		
WATCHDOG/SUPERVISOR	Yes		
PULSE-WIDTH MODULATORS	10-bit free-running counter and four pulse-width registers		
INPUT CAPTURE	2-channel input capture can be used to time input signals from various port pins		
QUADRATURE DECODER	2-channel quadrature decoder accepts inputs from external incremental encoder modules		
POWER	3.0–3.45 VDC @ 29.4 MHz, 2.8–3.45VDC @ 14.7 MHz 97 mA @ 3.3V, 29.4 MHz; 57 mA @ 3.0V, 14.7 MHz		
OPERATING TEMPERATURE	-40° C to +85° C		
HUMIDITY	5% to 95%, non-condensing		
CONNECTORS	Two 2 × 17, 1.27 mm pitch		
BOARD SIZE	1.160" × 1.375" × 0.31" (29.5 mm × 34.9 mm × 7.9 mm)		
PRODUCT WARRANTY	3 year		



PART NUMBERS	DESCRIPTION
20-101-0561	RCM3400
20-101-0562	RCM3410

DIGI SERVICE AND SUPPORT / You can purchase with confidence knowing that Digi is always available to serve you with expert technical support and our industry leading warranty. For detailed information visit www.digi.com/support.

© 1996-2019 Digi International Inc. All rights reserved.
All trademarks are the property of their respective owners.

91001604
C4/319

DIGI INTERNATIONAL WORLDWIDE HQ
877-912-3444 / 952-912-3444 / www.digi.com

DIGI INTERNATIONAL GERMANY
+49-89-540-428-0

DIGI INTERNATIONAL JAPAN
+81-3-5428-0261 / www.digi-intl.co.jp

DIGI INTERNATIONAL SINGAPORE
+65-6213-5380

DIGI INTERNATIONAL CHINA
+86-21-50492199 / www.digi.com.cn



Mouser Electronics

Authorized Distributor

Click to View Pricing, Inventory, Delivery & Lifecycle Information:

DIGI:

[101-0587](#) [20-101-0563](#)

Rabbit Semiconductor:

[151-0107](#)