

North America: Danboro, PA • E-mail: info@pemnet.com • Tel: +1-215-766-8853

Europe: Galway, Ireland • E-mail: europe@pemnet.com • Tel: +353-91-751714

Asia/Pacific: Singapore • E-mail: singapore@pemnet.com • Tel: +65-6-745-0660

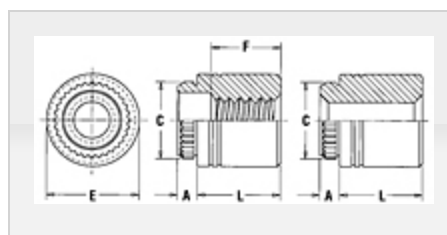
Shanghai, China • E-mail: china@pemnet.com • Tel: +86-21-5868-3688

Part # KFE-M3-14ET, Broaching Standoffs - Types KFE, KFSE - Metric

No matter how sophisticated or advanced, electronic components must be attached reliably and securely if they are to deliver optimum performance. We offer several fastener products for use with PC boards to satisfy component-to-board, board-to-board, and board-to-chassis attachment needs.

Broaching fasteners can also offer practical alternatives to “loose” hardware. They install permanently in all types of PC boards, as well as aluminum, acrylic, casting and polycarbonate components. A broaching

[+ more](#)



Specifications

Thread Size x Pitch M3 x 0.5

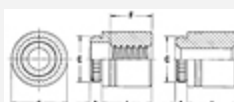
L - Length ± 0.13 14 mm

A (Shank) Max. 1.53 mm

Min. Sheet Thickness 1.53 mm

Hole Size in Sheet + 0.08 4.22 mm

C ± 0.08 4.68 mm



E ± 0.13 5.56 mm

F	9.50 mm
Min. Dist. Hole C/L to Edge	4.40 mm
For Use in Sheet Hardness¹	HRB 70 / HB 125 or Less PC Board
Thread Specification	Internal, ASME B1.13M, 6H
Fastener Material	Carbon Steel
Standard Finish	Electro-Plated Tin, ASTM B545, Class B with Clear Preservative Coating, Annealed
CAD Supplier	PennEngineering® (PEM®)

¹ HRB - Hardness Rockwell "B" Scale. HB - Hardness Brinell.