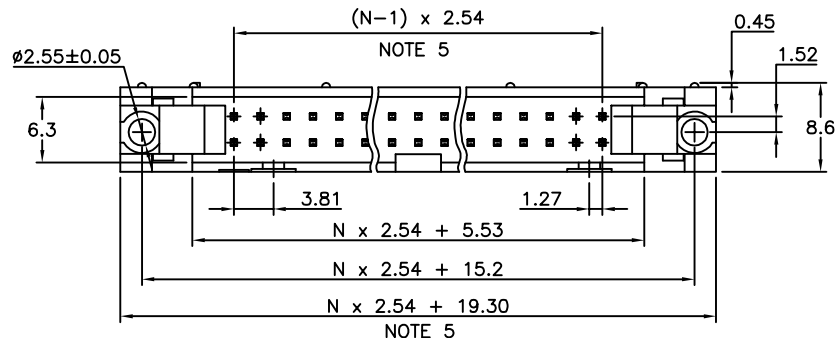


# PRODUCT NUMBER

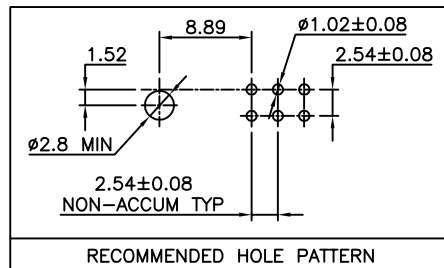
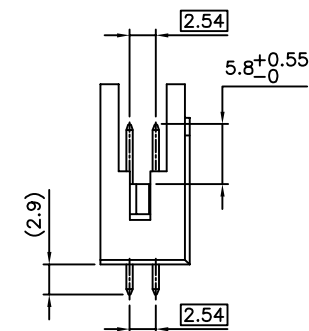
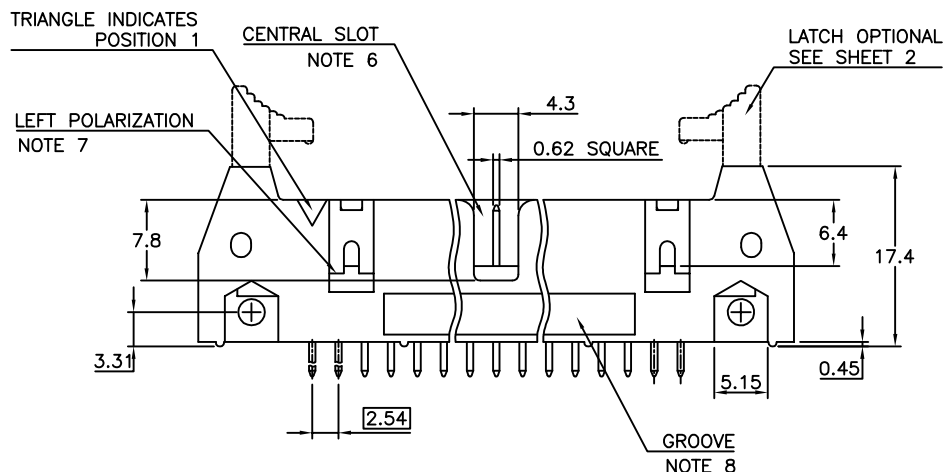
71918-YXXZZLF

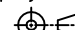


- WHEN REQUIRED, ADD SUFFIX LETTER "LF"  
INDICATES THE PRODUCT IS RoHS  
COMPATIBLE, SEE NOTE 10
- S= SPECIFIC CUSTOMER PLATING OPTION.  
COLOR OPTION, SEE NOTE 1
- TOTAL NB OF POSITIONS, SEE SHEET 2
- LATCHING  
0= WITHOUT LATCH  
1= STANDARD LATCH  
2= LOW PROFILE LATCH



## NOTES:

- HOUSING MATERIAL: GLASS FILLED THERMOPLASTIC UL94V-0  
= STANDARD COLOR GREY  
B = OPTION COLOR BLACK
- PIN MATERIAL : PHOSPHOR BRONZE
- PRODUCT PACKAGED IN TUBES
- 40N MIN LATCH RETENTION FORCE  
AT FIRST EXTRACTION
- TO DETERMINE DIMENSIONS :  
N = NUMBER OF POSITIONS PER ROW  
EXAMPLE : 8 POS  $N \times 2.54 = 20.32\text{mm}$
- NO CENTRAL SLOT ON POSITIONS 6 & 8
- NO LEFT POLARIZATION ON POSITIONS 06, 08, 10, 14.
- NO GROOVE ON POSITIONS 06, 08, 10, 14, 30, 34
- 4.5mm SOLDER TAIL  
ORDER 71918-4XX (WITH STANDARD LATCH ONLY)
- RoHS COMPATIBLE PRODUCT SPECIFICATIONS
  - PLATING:
    - "LF" MEANS THE PRODUCT IS LEAD-FREE,  
2 $\mu\text{m}$  MINIMUM MATTE TIN OVER 1.27 $\mu\text{m}$   
MINIMUM NICKEL UNDERPLATE.
  - MANUFACTURING PROCESS COMPATIBILITY
    - THE HOUSING WILL WITHSTAND EXPOSURE TO  
260°C  $\pm$  5°C SOLDER BATH TEMPERATURE FOR  
5 SECONDS IN A WAVE SOLDER APPLICATION  
WITH A 1.6mm MIN THICK CIRCUIT BOARD.
  - LABELING:
    - MEETS PACKAGING SPECS AS PER GS-14-920
  - LEGAL STATEMENT: SEE GS-47-0004.



mat'l. code SEE NOTES				surface ISO 1302 ✓		tolerance ISO 406 ISO 1101		projection 		product family QUICKIE			
ltr	ecn no	dr	date	tolerances unless otherwise specified				 mm		title SHR.EL.HEADER STR DR TMT			
Y	F12-0838	LMU	12.12.06	angles	linear	.X ±0.3							
AA	B-16776	LMU	14.01.23			.XX ±0.13							
AB	B-17853	LMU	14.06.05			.XXX ±0.05		scale 2:1		dwg no 71918 sheet 1 of 2 size A3			
				dr	D.LE	01.01.24							
V	F08-0146	YOV	08.04.11	engr	JM.C	01.01.24							
W	F09-0232	LMU	09.12.15	chr	JF.N	01.01.24							
X	F12-0011	LMU	12.02.06	appd	JM.C	01.01.24				type CUSTOMER Drawing			
sheet index	revision sheet	AB	V	1	2								

1

2 3

4

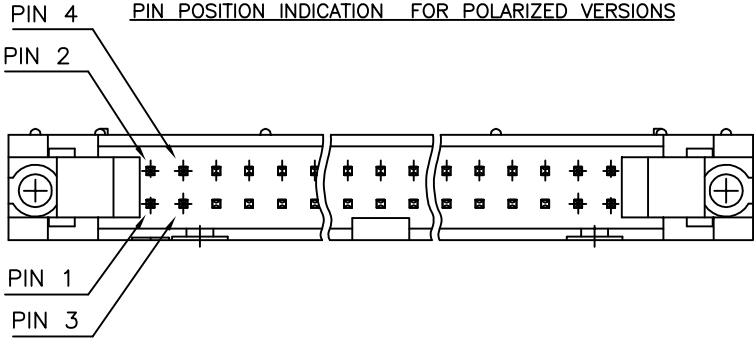
5

6

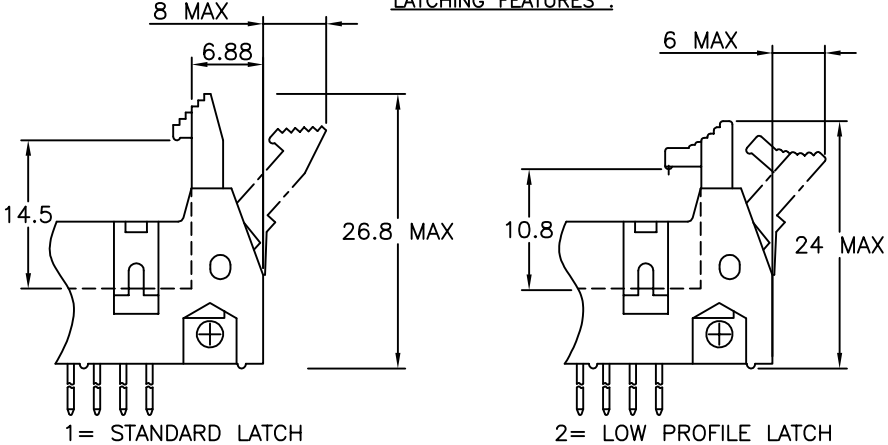
PRODUCT NUMBER	SIZE	LATCHING AVAILABILITY	MISSING PIN POSITIONS
71918-X06(B)(LF)	2x3	0/1/2	
71918-X08(B)(LF)	2x4	0/1/2	
71918-X10(B)(LF)	2x5	0/1/2	
71918-X14(B)(LF)	2x7	0/1/2	
71918-X16(B)(LF)	2x8	0/1/2	
71918-X18(B)(LF)	2x9	0/1/2	
71918-X20(B)(LF)	2x10	0/1/2	
71918-X26(B)(LF)	2x13	0/1/2	
71918-X27(B)(LF)	2x13	0/1/2	PIN 21 & 22
71918-X28(B)(LF)	2x13	0/1/2	PIN 5 to 12
71918-X30(B)(LF)	2x15	0/1/2	
71918-X34(B)(LF)	2x17	0/1/2	
71918-X35(B)(LF)	2x17	0/1/2	PIN 2 & 3
71918-X40(B)(LF)	2x20	0/1/2	
71918-X44(B)(LF)	2x22	0/1/2	
71918-X50(B)(LF)	2x25	0/1/2	
71918-X51(B)(LF)	2x25	0/1/2	PIN 39 to 46
71918-X60(B)(LF)	2x30	0/1/2	
71918-X64(B)(LF)	2x32	0/1/2	

PLATING :

- 0.76µm GOLD/GXT  
(PdNi WITH GOLD FLASH) ON CONTACT AREA  
3.81µm TIN-LEAD ON TAIL  
UNDERPLATE : 1.27µm Ni MIN
- WHEN SUFFIX LETTER "LF" IS REQUIRED,  
2µm MIN MATTE TIN OVER 1.27µm MIN  
NICKEL IS PROVIDED INSTEAD OF TIN-LEAD



LATCHING FEATURES :



mat'l. code				surface	tolerance	projection	product family
				ISO 1302	ISO 406 ISO 1101		QUICKIE
				tolerances unless otherwise specified			title
R	F07-0195	LMU	07.05.25	angles	.X ±0.3	mm	SHR.EL.HEADER
S	F08-0146	YOV	08.04.11	linear	.XX ±0.15		STR DR TMT
T	F12-0011	LMU	12.02.06		.XXX ±0.05	scale 2:1	
U	F12-0838	LMU	12.12.06	dr	D.LE	01.01.24	dwg no
V	B-16776	LMU	14.01.23	engr	JM.C	01.01.24	sheet 2 of - size
				chr	JF.N	01.01.24	71918 A3
				app	JM.C	01.01.24	type
sheet	revision						CUSTOMER Drawing
index	sheet						