

ADAPTERS, BETWEEN-SERIES

TYPE N / SMA

DC - 18 GHz
BULKHEAD MOUNT



MODELS: 5209, 5210, 5212 & 5213

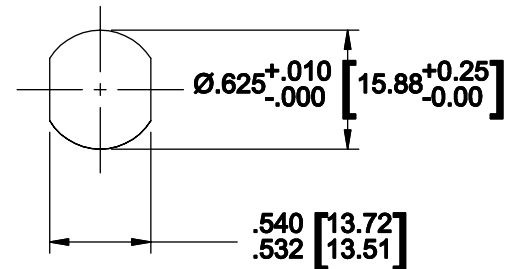
SPECIFICATIONS:

Electrical:

Frequency Range _____ DC - 18.0 GHz
VSWR _____ 1.20:1 Max.
Impedance _____ 50 Ohms
Temperature Range _____ -65°C to +125°C

Mechanical:

Connectors _____ Passivated Stainless Steel
(Notes with MIL-STD-348)
Conductors _____ Gold Plated Beryllium Copper
Nut & Washer _____ Passivated Stainless Steel
O-Ring _____ Silicone Rubber



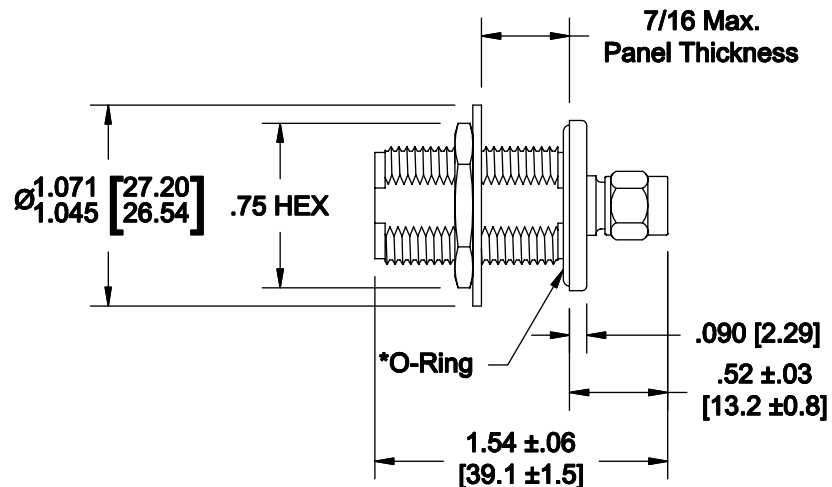
Recommended Panel Configuration

Model Number: 5213

Type N Female / SMA Male
*Includes O-Ring as Shown

Model Number: 5210

Type N Female / SMA Male
No O-Ring Included

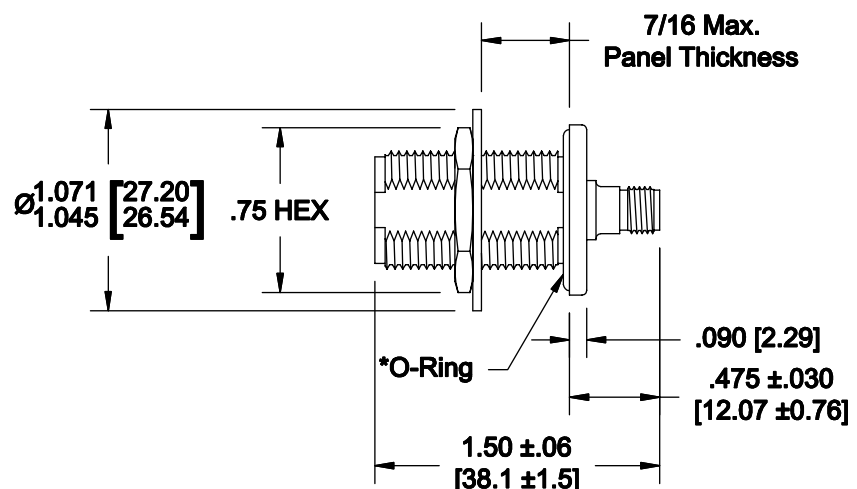


Model Number: 5212

Type N Female / SMA Female
*Includes O-Ring as Shown

Model Number: 5209

Type N Female / SMA Female
No O-Ring Included



Note: Dimensions in Brackets are Expressed in Millimeters and are for Reference Only.

5213; REV C