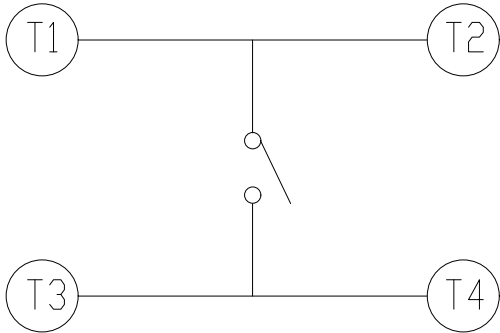
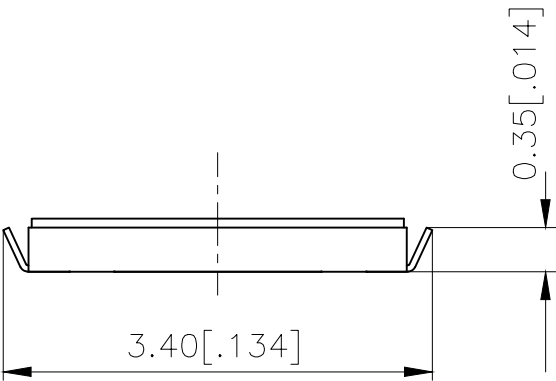
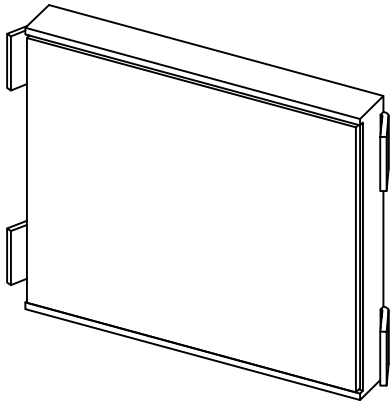
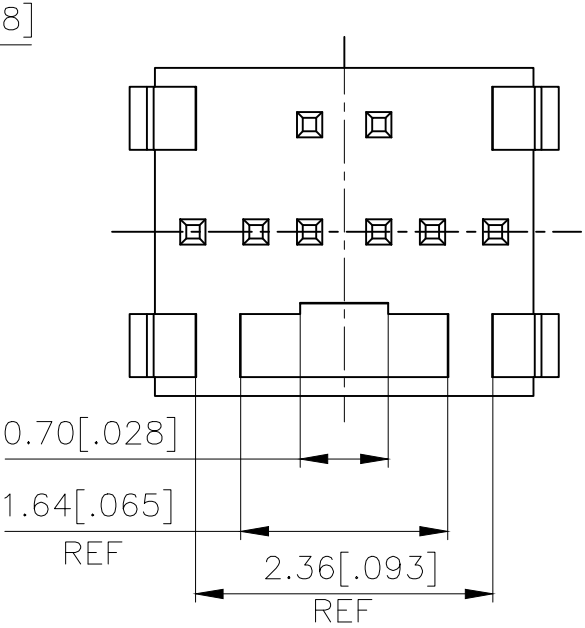
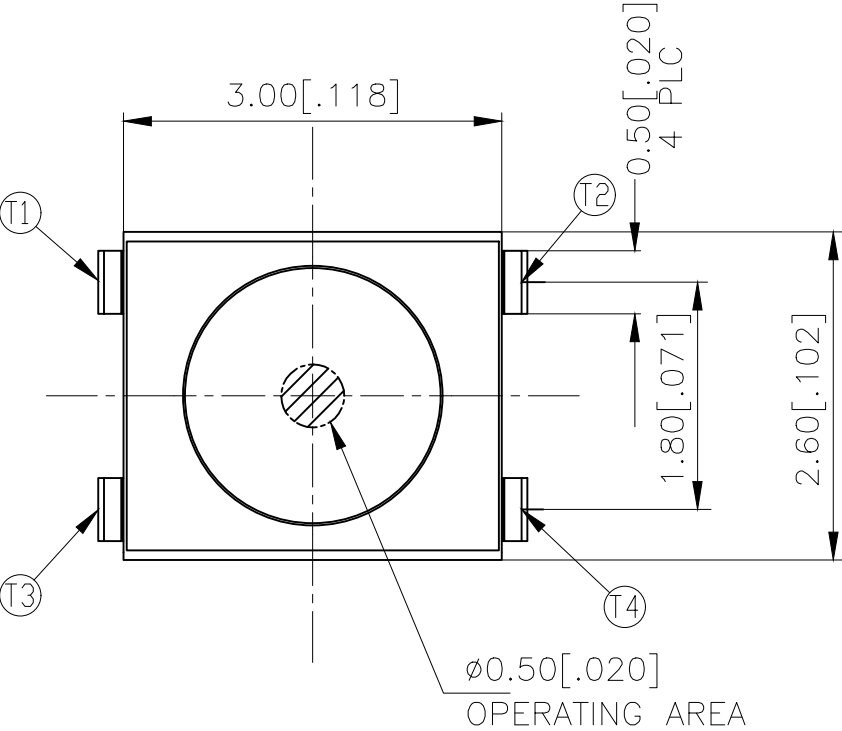
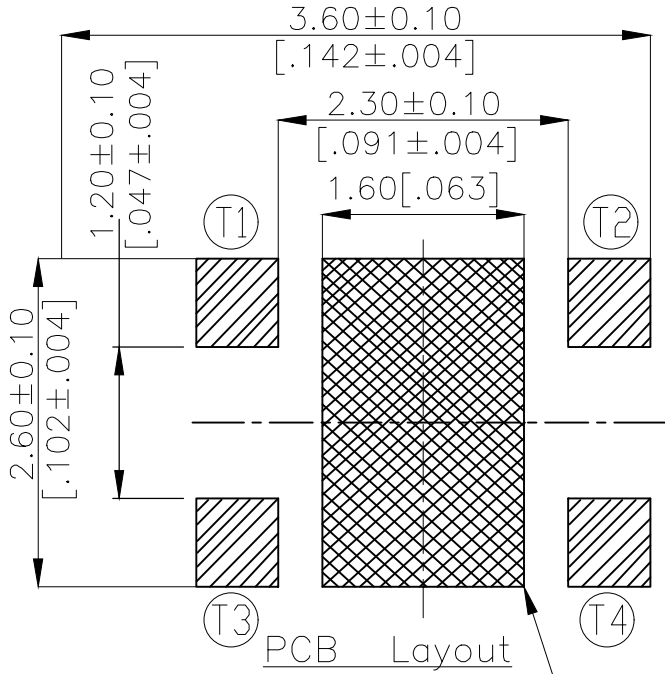


REVISIONS					
P	LTR	DESCRIPTION	DATE	DWN	APVD
	1	NEW DRAWING	04JUL2018	GCM	AS



CIRCUIT DIAGRAM



NO LAND PATTERN OR VIAS PERMITTED

160±50	USLPT3026BL2TR	2337227-2
100±50	USLPT3026BL1TR	2337227-1
ACTUATION FORCE (gf)	SMART PART NUMBER	PART NUMBER

PRELIMINARY

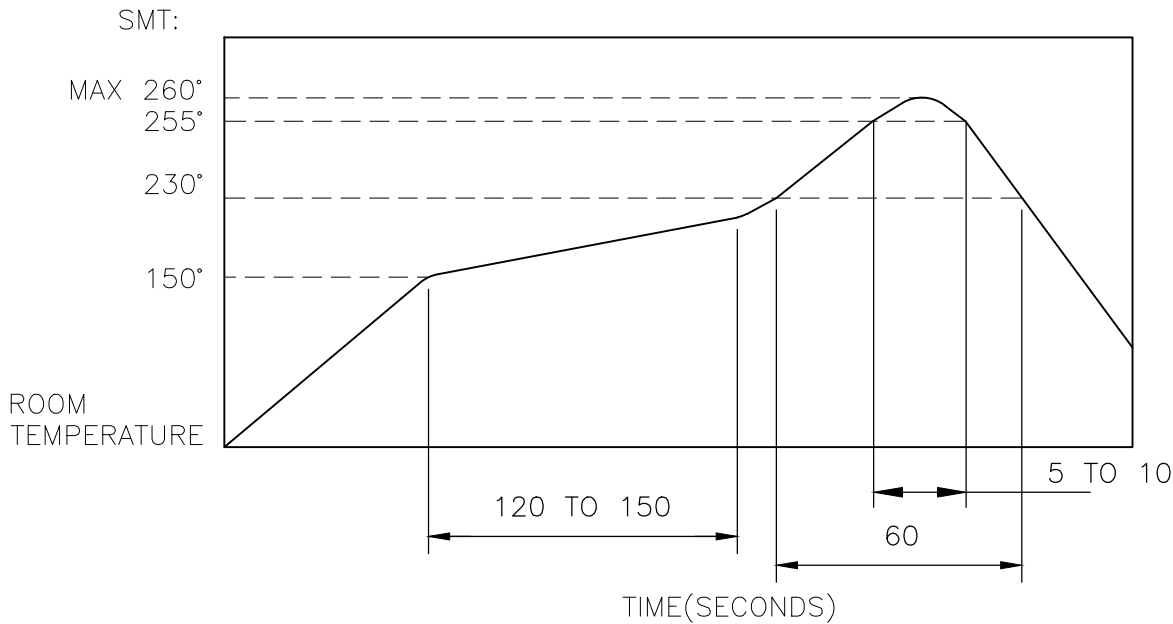
THIS DRAWING IS A CONTROLLED DOCUMENT.		DWN 04JUL2018 GANESH C M	<div>PRELIMINARY</div> <div>TE Connectivity Ltd.</div> <div>SWITCH, TACTILE, LOW-PROFILE, ULTRA-MINI, 3.0 x 2.6 x 0.45, J BEND</div>		
DIMENSIONS: mm [INCHES]		CHK 04JUL2018 ALEXANDER SHARPE			
		APVD 04JUL2018 ALEXANDER SHARPE			
TOLERANCES UNLESS OTHERWISE SPECIFIED:		PRODUCT SPEC			
MATERIAL		APPLICATION SPEC	NAME		
FINISH		WEIGHT	SIZE CAGE CODE DRAWING NO RESTRICTED TO		
-		-	A3 00779 C-2337227		
CUSTOMER DRAWING		SCALE NTS	SHEET 1 of 3 REV 1		

THIS DRAWING IS UNPUBLISHED.	RELEASED FOR PUBLICATION
© COPYRIGHT - TE Connectivity Ltd.	ALL RIGHTS RESERVED.

NOTES:

1. MATERIALS:
TERMINAL: COPPER ALLOY, SILVER FINISH
BASE: THERMOPLASTIC, UL 94V-0, BLACK
TAPE: POLYIMIDE
CONTACT: STAINLESS STEEL, SILVER FINISH
2. COMPLIANCE:
ALL MATERIALS AND FINISHES SHALL COMPLY WITH
EU DIRECTIVE 2002/95/EC OF 27JAN2003(RoHS)
3. SPECIFICATIONS:
RATING: 50 mA, 12V DC
CONTACT RESISTANCE: 500mΩ MAXIMUM (INITIAL)
INSULATION RESISTANCE: 50MΩ MINIMUM (INITIAL)
DIELECTRIC STRENGTH: 250V AC, 1 MINUTE
OPERATING LIFE: 100,000 CYCLES WITH LOAD
TRAVEL: 0.15±0.1[.006±.004]
ACTUATION FORCE: 2337227-1 = 100±50gf
2337227-2 = 160±50gf
OPERATING TEMPERATURE: -40° TO 85°C
STORAGE TEMPERATURE: -20° TO 60°C (WITHIN TAPE PACKAGE)

4. SOLDER CONDITIONS:



THE CONDITION NOTED ABOVE IS THE TEMPERATURE OF THE COPPER FOIL ON THE SURFACE OF THE PCB. THERE ARE CASES WHERE THE TEMPERATURE OF THE BOARD GREATLY DIFFERS FROM THE SURFACE OF THE SWITCH. DO NOT ALLOW THE SURFACE TEMPERATURE OF THE SWITCH TO EXCEED 260°C.

REVISIONS

P	LTR	DESCRIPTION	DATE	DWN	APVD
	-	SEE SHEET 1	-	-	-

MANUAL SOLDERING:

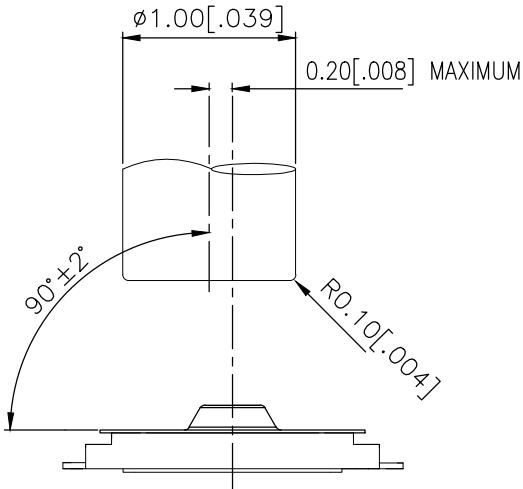
SOLDERING TEMPERATURE	350°C MAXIMUM
CONTINUOUS SOLDERING TIME	5 SECONDS MAXIMUM

HANDLING PRECAUTIONS:

1. CARE SHOULD BE EXERCISED SO THAT FLUX FROM THE TOP SURFACE OF THE PRINTED CIRCUIT BOARD DOES NOT ADHERE TO THE SWITCH.
2. DO NOT WASH THE SWITCH.

5. OPERATING PRECAUTIONS:

1. DO NOT ACTUATE THE SWITCH WITH EXCESSIVE FORCE
2. DISCONTINUE FORCE AFTER THE SWITCH HAS BEEN ACTUATED SO AS TO AVOID DEFORMATION OF THE COMPONENTS OF THE SWITCH. DEFORMATION OF THE COMPONENTS MAY CAUSE THE SWITCH TO MALFUNCTION.
3. ALIGN THE PLUNGER WITH THE SWITCH TO INSURE PROPER OPERATION



RECOMMENDED OPERATING CONDITIONS


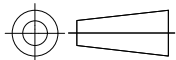
6. STORAGE CONDITIONS:

AVOID THE FOLLOWING AS EXPOSURE MAY AFFECT THE PERFORMANCE AND/OR THE SOLDERABILITY OF THE SWITCH:

1. TEMPERATURE OF -10° TO 40°C AND 85% HUMIDITY
2. EXPOSURE TO CORROSIVE GAS
3. STORAGE OVER 6 MONTHS
4. EXPOSURE TO DIRECT SUNLIGHT

STORAGE CONDITIONS SHOULD PREVENT HEAVY IMPACT OR LOADING

AFTER OPENING THE PACKAGE, UNUSED SWITCHES MUST BE REPACKAGED IN A MOISTURE-PROOF AND AIRTIGHT ENVIRONMENT.

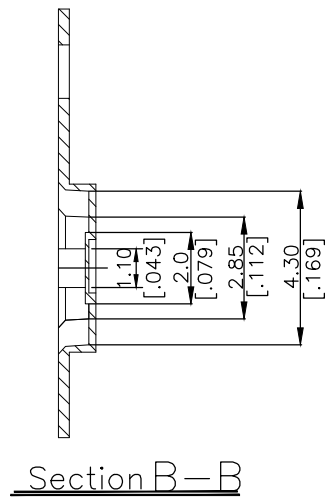
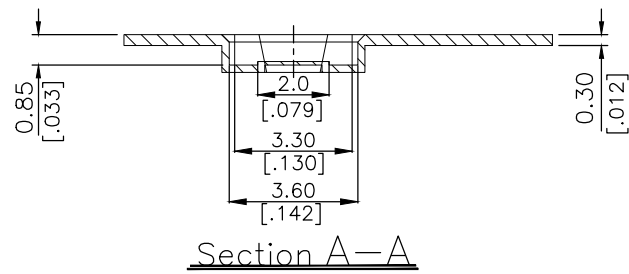
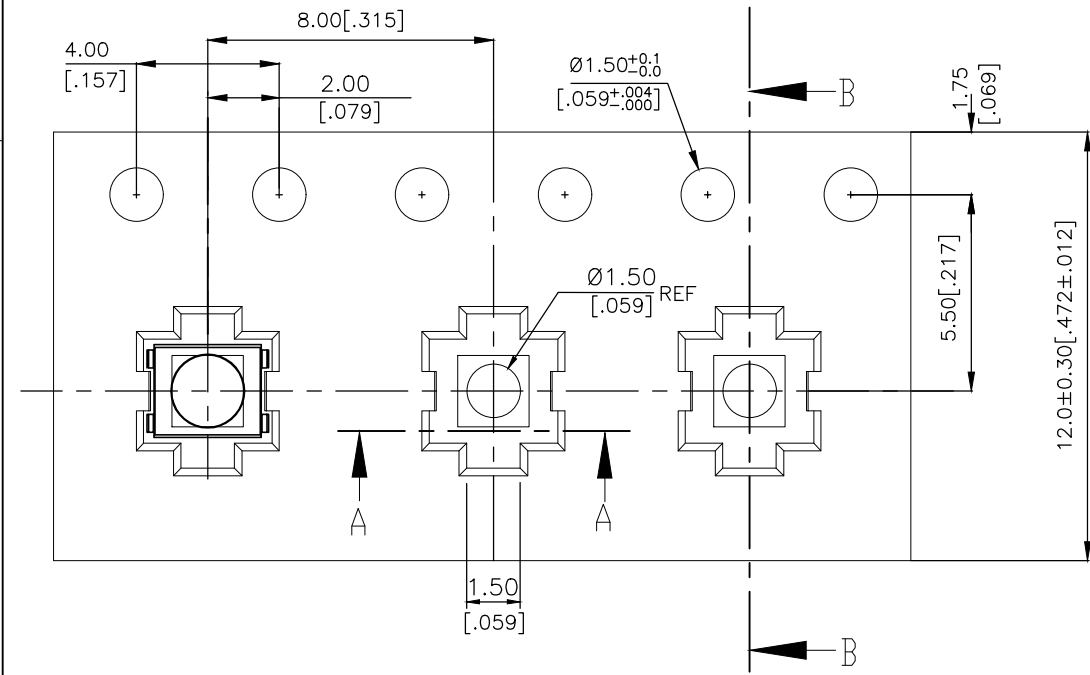
THIS DRAWING IS A CONTROLLED DOCUMENT.		DWN GANESH C M 04JUL2018	 TE Connectivity Ltd.						
DIMENSIONS: mm [INCHES]	TOLERANCES UNLESS OTHERWISE SPECIFIED:	CHK ALEXANDER SHARPE 04JUL2018	NAME SWITCH, TACTILE, LOW-PROFILE, ULTRA-MINI, 3.0 x 2.6 x 0.45, J BEND —						
		APVD ALEXANDER SHARPE 04JUL2018							
	0 PLC ± — 1 PLC ± — 2 PLC ± 0.2 [.008] 3 PLC ± — 4 PLC ± — ANGLES ± —	PRODUCT SPEC —					SIZE A3 CAGE CODE 00779 DRAWING NO C-2337227 RESTRICTED TO —		
		APPLICATION SPEC —							
MATERIAL —	FINISH —	WEIGHT							
CUSTOMER DRAWING			SCALE NTS	SHEET 2 OF 3	REV 1				

PRELIMINARY

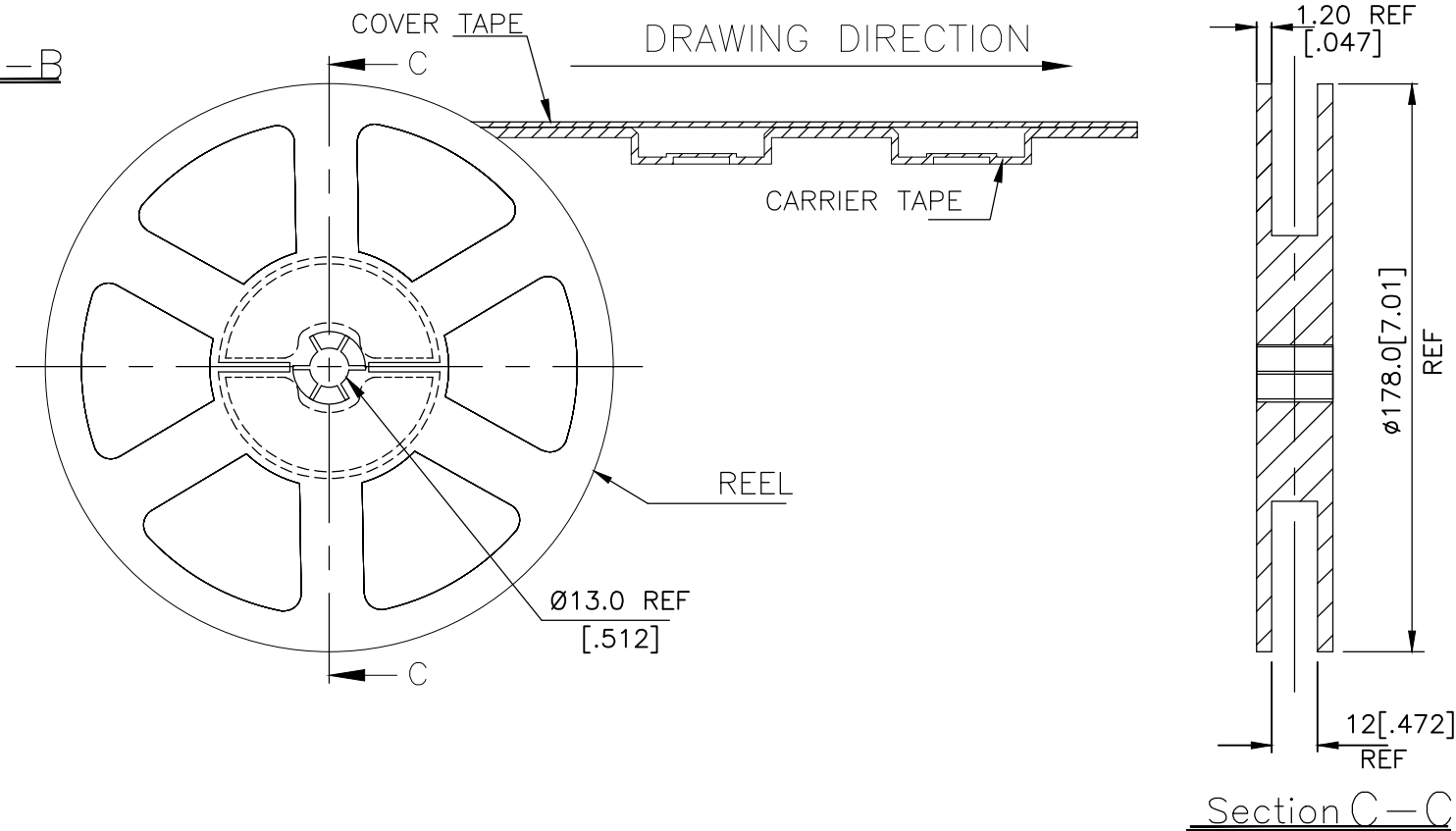
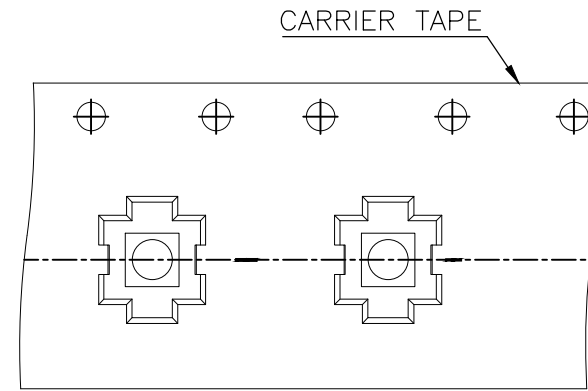
REVISIONS					
P	LTR	DESCRIPTION	DATE	DWN	APVD
	—	SEE SHEET 1	—	—	—

PACKAGING:
2,500 SWITCHES PER REEL


THE DIMENSIONS OF CARRIER TAPE AND REEL



ORIENTATION OF PILOT HOLES



PRELIMINARY

THIS DRAWING IS A CONTROLLED DOCUMENT.		DWN GANESH C M 04JUL2018	 TE Connectivity Ltd.		
		CHK ALEXANDER SHARPE 04JUL2018			
DIMENSIONS: mm [INCHES]		APVD ALEXANDER SHARPE 04JUL2018	NAME SWITCH, TACTILE, LOW-PROFILE, ULTRA-MINI, 3.0 x 2.6 x 0.45, J BEND		
		PRODUCT SPEC			
		APPLICATION SPEC			
		WEIGHT	SIZE A3	CAGE CODE 00779	DRAWING NO C-2337227
MATERIAL —		FINISH —	RESTRICTED TO —		
			CUSTOMER DRAWING		
			SCALE NTS	SHEET 3 OF 3	REV 1