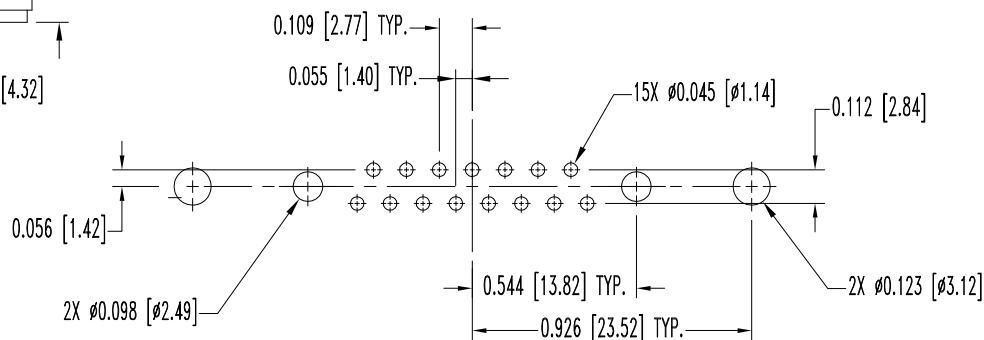
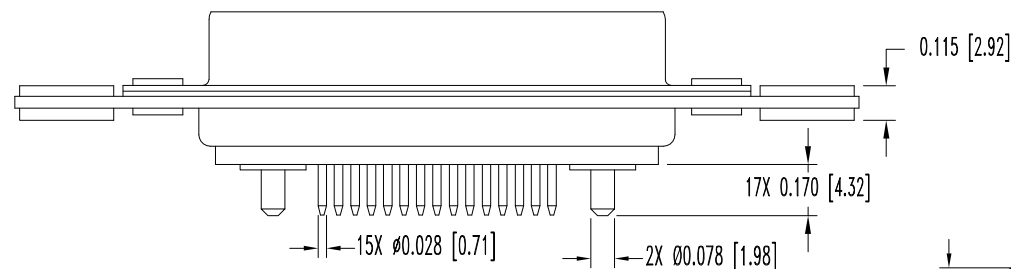
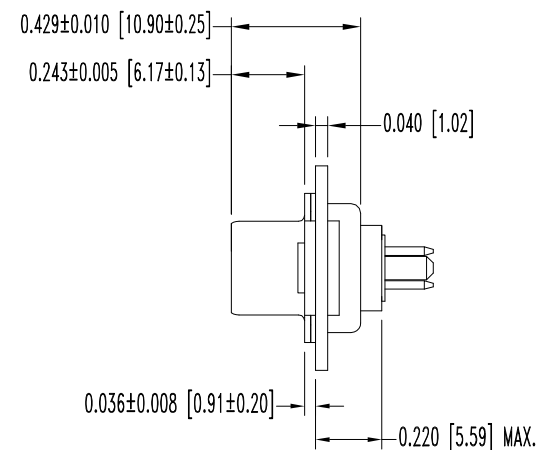
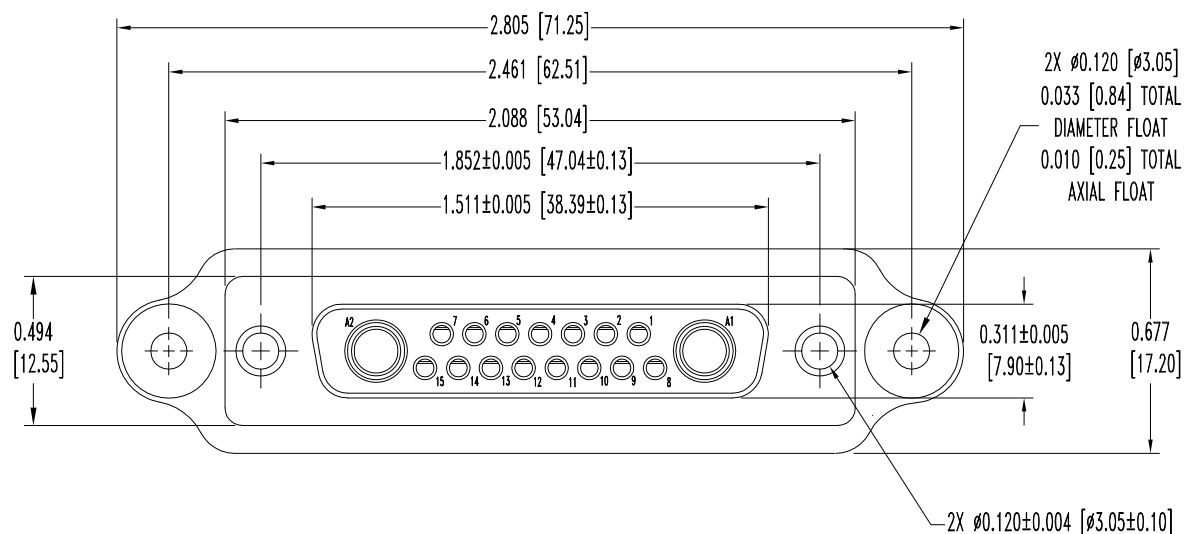


SK10736

THIS DRAWING CONTAINS INFORMATION PROPRIETARY TO POSITRONIC AND ITS SUBSIDIARIES. POSITRONIC BELIEVES THE DATA ON THIS DRAWING TO BE RELIABLE. SINCE THE TECHNICAL INFORMATION IS GIVEN FREE OF CHARGE, THE USER EMPLOYS SUCH INFORMATION AT HIS OWN DISCRETION AND RISK. POSITRONIC ASSUMES NO RESPONSIBILITY FOR RESULTS OBTAINED OR DAMAGES INCURRED FROM USE OF SUCH INFORMATION IN WHOLE OR IN PART.

DATE	REV	REVISION RECORD	APP	DR	CK
5-20-09	NC	ECO 31054	RCW	BS	COLE
3-19-10	A	ECO 32267	COLE	BE	COLE



NOTES:

1. MATERIALS AND FINISHES:

INSULATOR: GLASS FILLED POLYESTER PER ASTM D5927, UL 94V-0, COLOR: BLUE.

SIGNAL CONTACTS: PRECISION MACHINED COPPER ALLOY WITH BERYLLIUM COPPER CLIP,

0.000050 [1.27µ] GOLD OVER NICKEL PLATE.

POWER CONTACTS: MACHINED OF HIGH CONDUCTIVITY COPPER ALLOY, GOLD FLASH OVER NICKEL PLATE.

SHELLS: STEEL, ZINC PLATE WITH CHROMATE SEAL.

MOUNTING PLATE: ALUMINUM, YELLOW ANODIZED.

FLOAT BUSHINGS: BRASS, ZINC PLATE WITH CHROMATE SEAL.

FLOAT WASHERS: BRASS, ZINC PLATE WITH CHROMATE SEAL.

2. DETAILED PRODUCT, ELECTRICAL, AND MECHANICAL INFORMATION IS AVAILABLE

IN THE LATEST STANDARD DENSITY COMBO-D PRODUCT PUBLICATION.

VISIT CONNECTPOSITRONIC.COM/PRODUCTS/1/STANDARD DENSITY COMBO-D OR CONNECTPOSITRONIC.COM.

3. MOS ALLOWS FOR CONNECTOR TO HAVE BLIND MOUNTING PLATE INSTALLED.

4. DIMENSIONS ARE IN INCHES [MILLIMETERS]

CONTACT HOLE PATTERN

 POSITRONIC INDUSTRIES INC. www.connectpositronic.com		FSCM 28198	
 DECIMAL TOL. ± 0.015 [0.38]	SCALE N.T.S.	DRAWN BY B SHELLERY	APPROVED BY R WILLIAMS
TITLE CBM17W2S350000-759.1		DATE 5-21-09	
ANGULAR TOL. ± 5°		DRAWING NUMBER SK10736	
		REV. A	