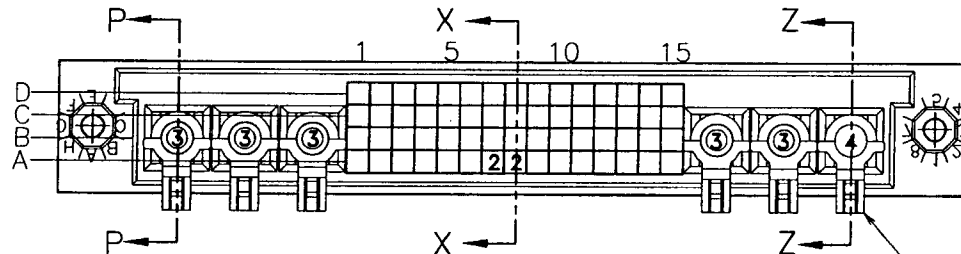


Tous droits strictement réservés. Reproduction ou communication à des tiers interdite sous quelque forme que ce soit sans autorisation écrite du propriétaire. Propriété de c FCI. Droits de reproduction FCI.

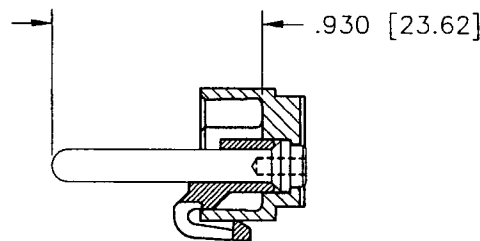


All rights strictly reserved. Reproduction or issue to third parties in any form whatever is not permitted without written authority from the proprietor. Property of FCI. Copyright FCI.

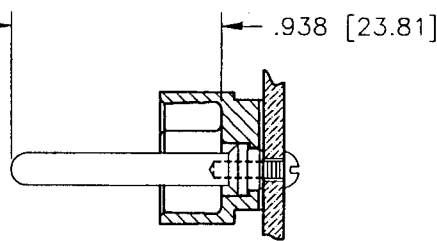
PRODUCT NUMBER	ITEM	SIZE-4X15+6P	NUMBER OF POSITIONS-60S+6P	POSITIONS LOADED-60S+6P
50514-XX001		PLATING--30u"/.76u Au	PRESS FIT STYLE--TERM P/N 94081	
		QTY.	PART NUMBER	MATING LENGTH
	1	58	94081-1055B	.260/6.6
	2	2	94081-1018B	.220/5.59
	3	5	50271-002	.263/6.68
	4	1	87517-001	.938/23.83
	5	2	77549-004	NOT-ASSEMBLED - SEE NOTE 4



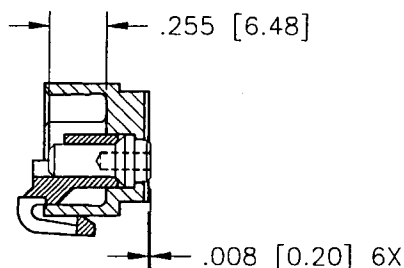
NOTE 5



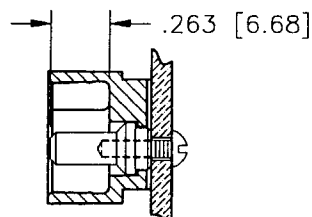
SECTION Z-Z



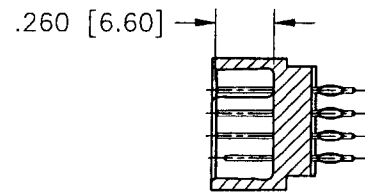
SECTION Z-Z
(INSTALLED)



SECTION P-P



SECTION P-P
(INSTALLED)



SECTION X-X

NOTES:

1. ALL POSITIONS ARE LOADED WITH "1" EXCEPT WHERE NOTED.
2. COLUMN 1 ROW A IS DESIGNATED AS PIN 1, VIEWED FROM THE MATING FACE.
3. FOR ADDED DIMENSIONAL INFORMATION REFER TO DOCUMENT NO. "50514".
- 4 SHIPING INSTRUCTIONS:
X PC(S) OF 50514-XX001
PACKAGED PER BUS-14-143 AND
SPECIAL PACKAGING REQUIREMENTS:
2X PCS OF 77549-004
PLASTIC ORIENTATION KEY-
TOTAL QTY. BAGGED SEPARATELY
W/ALL OF THE ABOVE TO BE
PACKED IN THE SAME BOX.
5. POWER PIN LOCATOR (REF. 50234) TO
BE REMOVED AFTER BOARD INSTALLATION.
6. HOUSING PART NO. - 50460-X060X

mat'l. code				tolerances unless otherwise specified		CUSTOMER COPY		Electronics FCI	
ltr	ecn no	dr	date	linear	.XX±.01/.X±.3	projection	title	www.fciconnect.com	
C	V23887	JM	1/6/93		.XXX±.005/.XX±.13		4 ROW VERTICAL HEADER		
D	V31245	GIP	6/24/93		.XXX±.0020/.XXX±.051		PRESS FIT. SELECT LOAD, 0 G.P. 6.P.P.		
E	V31394	PDP	7/26/93	angles	0° ±2°				
F	V50307	GAH	5/10/95	dr	D. SHEAFFER 9/14/92	INCH/MM	product family	HPC	code
G	V60465	GIP	3/18/96	enrg	S. CLARK 9/14/92	scale 1:1	size	dwg no	213
H	V90158	HTB	2/22/99	chr	S. CLARK 9/14/92		A 50514-XX001		sheet
J	V01588	LSS	7/7/00	appd	S. CLARK 9/14/92				1 of 1
sheet	revision	J							
index	sheet	1							

cage code
22526

ACAD

PDM: Rev:J

STATUS:Released

Printed: Jun 25, 2005