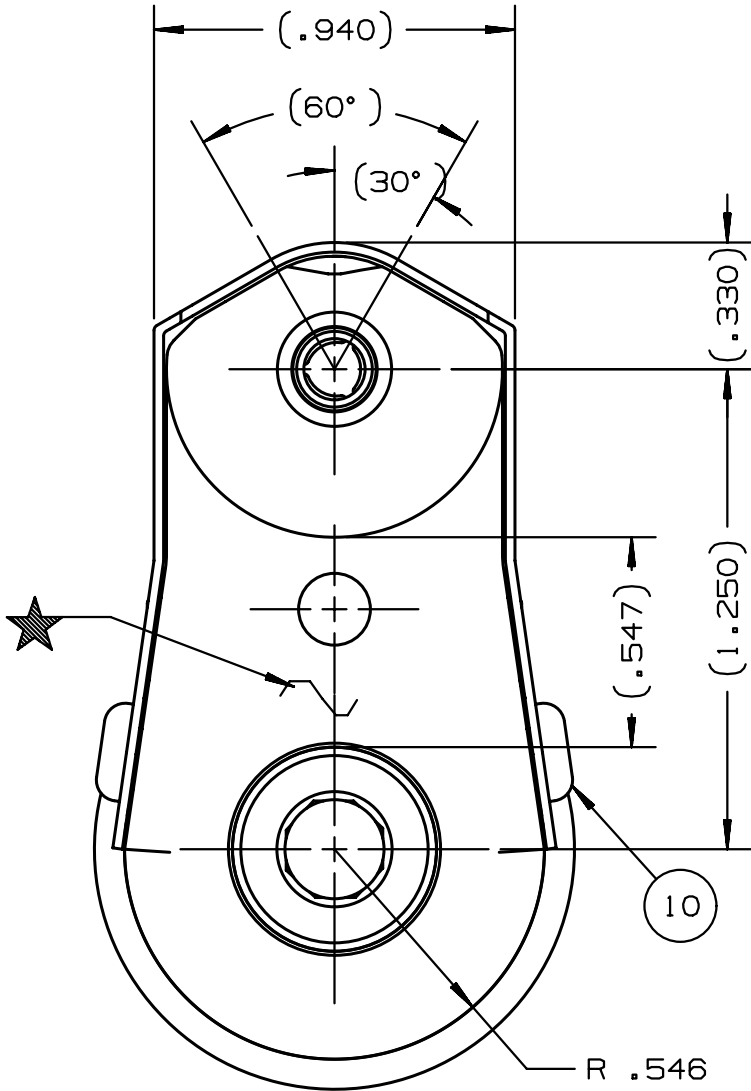
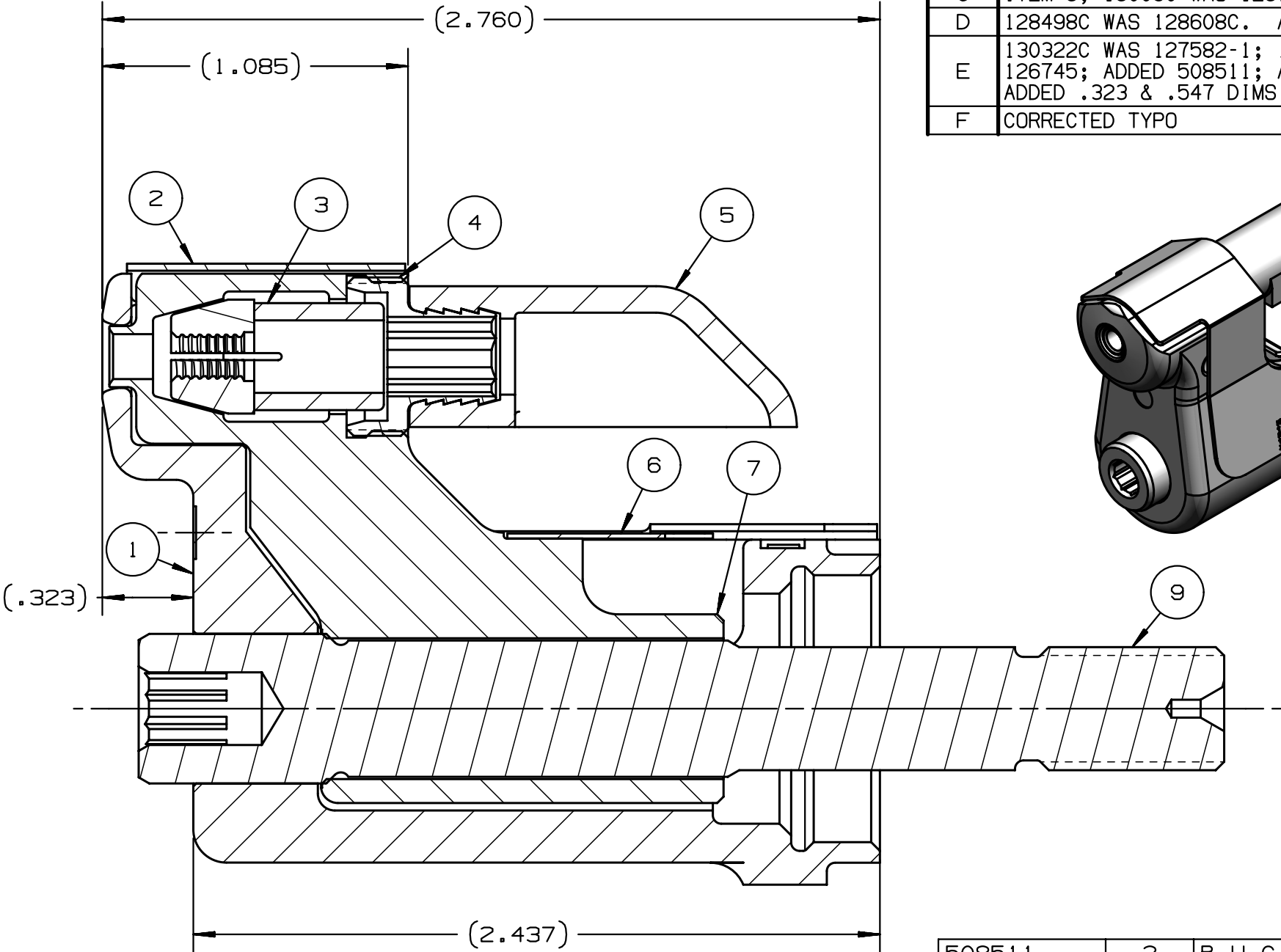
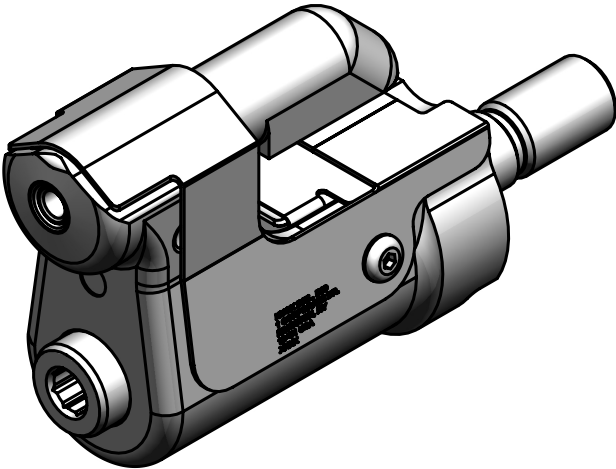
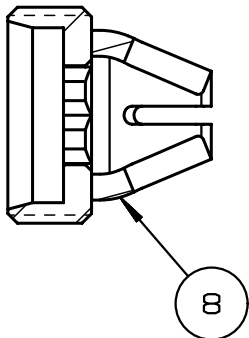


REV	DESCRIPTION	DET	DATE
C	ITEM 3, 130050 WAS 123188	EL	11/08/11
D	128498C WAS 128608C. ADDED 128487	JJC	07/31/12
E	130322C WAS 127582-1; 130326 WAS 126745; ADDED 508511; ADDED VIEW; ADDED .323 & .547 DIMS	HKS	6/13/13
F	CORRECTED TYPO	HKS	10/31/13



NOTES:

- 1 MAXIMUM RECOMMENDED STROKE .500
- 2 FOR USE WITH THE 225/245 TOOL, USE ATTACHMENT P/N 119400-1 AND STROKE LIMITER 118362
- 3 FOR USE WITH 2500, USE ATTACHMENT P/N 119400-1 AND STROKE LIMITER KIT 119888
- 4 FOR OTHER TOOLS AND/OR OTHER TOOL AND STROKE COMBINATIONS, CONSULT ENGINEERING DEPARTMENT
- 5 SHIP WITH STOP 126747
- 6 SHIP WITH DEFLECTOR 126748-2
- 7 SHIP WITH (2) .030 SHIMS 128290 REFERENCE PB563 FOR PROPER USE



508511	2	B.H.C.S.	10
128487	1	DRAWBAR	9
126748-2	1	UNITIZED DEFLECTOR	8
128498C	1	COLLET	7
130326	1	GUARD	6
120095	1	DEFLECTOR	5
122727	1	BARBED RETAINER	4
130050	1	UNITIZED CHUCK JAW	3
130322CS	1	TOP GUARD	2
127041C	1	ANVIL	1
PART NO.	QTY	DESCRIPTION	ITEM

IDENTIFICATION PER SPEC 42-311: ★ ETCH		HUCK INTERNATIONAL, INC., I.S.D 1 CORPORATE DR KINGSTON, NEW YORK 12401	
ITAR/ECCN: EAR99		CLEARANCE NOSE ASSEMBLY -05 LGP STRADDLE	
SCH B#: 8467.99.0190		FINAL ASSY: FOR USE WITH 206-375	
HTS: 8467.99.0190		ENG: MVM CK: DATE: 10/13/04 SCALE: 2:1	
		B	99-3733C