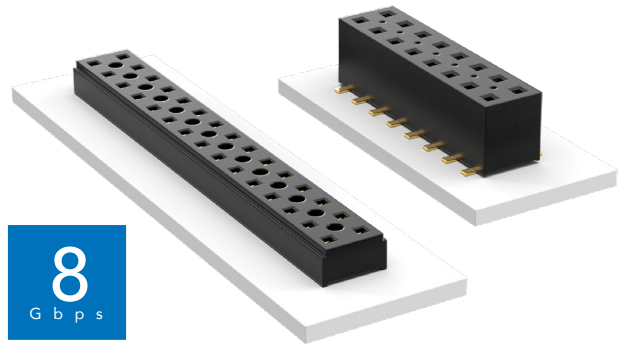


# COST-EFFECTIVE & DUAL WIPE SOCKETS

(2.00 mm) .0787" PITCH • TLE/CLT SERIES



## TLE

**Mates:**  
TMMH, TMM, MTMM,  
MMT, TW, LTMM, ZLTMM,  
TCMD, TSH

## CLT

**Mates:**  
TMM, TMMH, MTMM,  
MMT, TW, TSH

### SPECIFICATIONS

#### TLE

**Insulator Material:**  
Black Liquid Crystal Polymer  
**Contact Material:**  
Phosphor Bronze  
**Plating:**  
Au over 50 μ" (1.27 μm) Ni  
**Operating Temp Range:**  
-55 °C to +125 °C  
**Current Rating (TLE/TMMH):**  
3.2 A per pin (2 pins powered)  
**Voltage Rating:**  
406 VAC/574 VDC  
**Insertion Depth:**  
(2.08 mm) .082" to  
(4.37 mm) .172" with  
(0.38 mm) .015" wipe,  
pass-through, or  
(3.35 mm) .132" min  
for bottom entry

#### CLT

Same as TLE except:  
**Plating:**  
Sn or Au over 50 μ" (1.27 μm) Ni  
**Current Rating (CLT/TMMH):**  
4.2 A per pin (2 pins powered)  
**Voltage Rating:**  
405 VAC/573 VDC  
**Insertion Depth:**  
Top Entry=  
(1.40 mm) .055" minimum  
Bottom Entry=  
(2.57 mm) .101" minimum  
(add board thickness for  
correct post OAL)  
**Max Cycles:**  
100 with 10 μ" (0.25 μm) Au

### PROCESSING

#### TLE


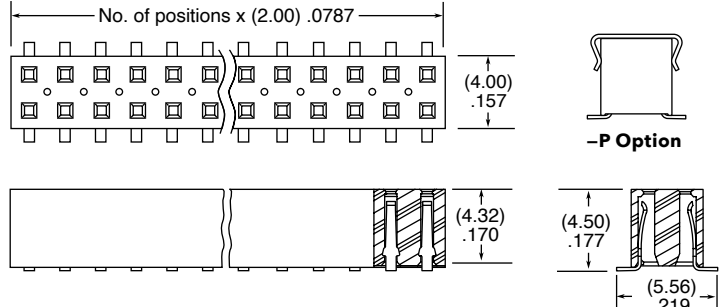
**Lead-Free Solderable:** Yes  
**SMT Lead Coplanarity:**  
(0.10 mm) .004" max (02-26)  
(0.15 mm) .006" max (27-50)\*  
\*(.004" stencil solution  
may be available; contact  
ipg@samtec.com)

#### CLT


Same as TLE except:  
**SMT Lead Coplanarity:**  
(0.10 mm) .004" max (02-25)  
(0.15 mm) .006" max (26-34)\*  
(0.20 mm) .008" max (35-50)\*  
\*(.004" stencil solution  
may be available; contact  
ipg@samtec.com)

**Note:**  
Some lengths, styles and  
options are non-standard,  
non-returnable.

TLE	1	NO. PINS PER ROW	01	PLATING OPTION	DV	OPTIONS
		02 thru 50		-G = 10 μ" (0.25 μm) Gold		-A = Alignment Pin (3 positions minimum)  -K = (5.00 mm) .197" DIA Polyimide Film Pick & Place Pad (3 positions minimum)  -P = Metal Pick & Place Pad (4 positions minimum)  -TR = Tape & Reel Packaging (2-37 positions only)  -FR = Full Reel Tape & Reel (must order maximum quantity per reel; contact Samtec for quantity breaks) (2-37 positions only)

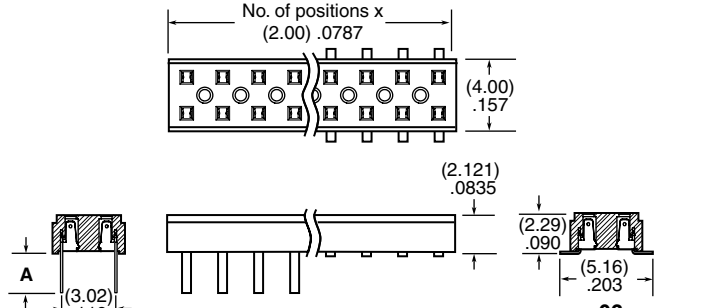



CLT	1	NO. PINS PER ROW	LEAD STYLE	PLATING OPTION	D	OTHER OPTIONS
		02 thru 50	-01 = Through-hole  -02 = Surface Mount  -03 = Through-hole	-F = Gold flash on contact, Matte Tin on tail  -L = 10 μ" (0.25 μm) Gold on contact, Matte Tin on tail  -G = 10 μ" (0.25 μm) Gold on contact, Gold flash on tail		All options require Style -02  -BE = Bottom Entry (Required for bottom entry applications)  -A = Alignment Pin (3 positions minimum) Metal or plastic at Samtec's discretion  -K = (5.00 mm) .197" DIA Polyimide Film Pick & Place Pad (04 thru 50 only)  -P = Pick & Place Pad (4 positions minimum) (Not always necessary for auto placement.)  -TR = Tape & Reel (36 positions max)  -FR = Full Reel Tape & Reel (must order maximum quantity per reel; contact Samtec for quantity breaks) (36 positions max)



**ALSO AVAILABLE**  
Contact Samtec

Other Platings



LEAD STYLE	A
-01	(2.16) .085
-03	(2.95) .116

