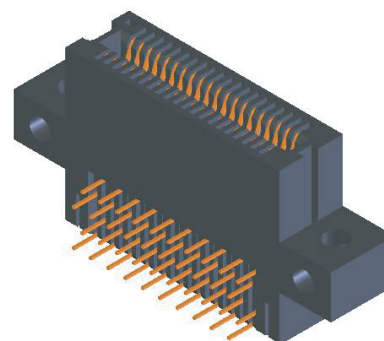


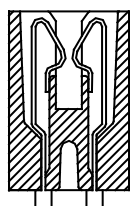
.039" [1.00mm] CONTACT CENTERS RIGHT ANGLE

FEATURES

- * Accommodates .062 \pm .008" PC board
- * PA9T or PPS insulator
- * Molded-in key available
- * High reliability/high cycle hairpin bellows contact
- * 1 amp current rating
- * 150 grams normal force minimum

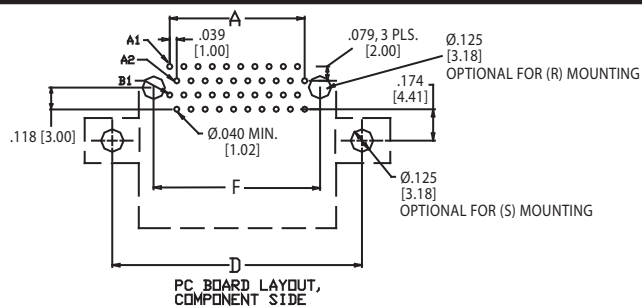
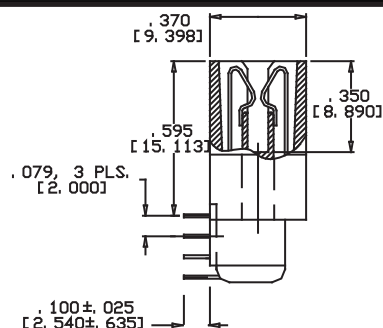


READOUT

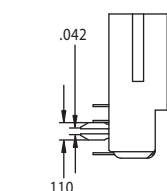


DUAL (D)

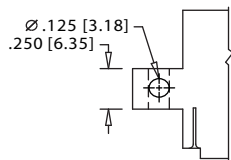
TERMINATION TYPE



MOUNTING STYLE



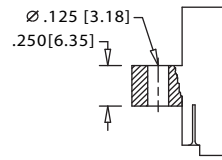
Metal Board Lock (R)
(with no mounting ears)



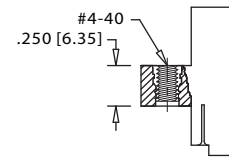
SIDE MOUNTING (S)



NO MOUNTING EARS (N)



FLUSH MOUNTING (D)



THREADED INSERT (T)

.039" [1.00mm] CONTACT CENTERS RIGHT ANGLE

PART NUMBER CODING **

MATERIALS (Insulator/Contact)

R = PPS/Phosphor Bronze
A = PPS/Beryllium Copper
G = PA9T/Phosphor Bronze
J = PA9T/Beryllium Copper

CONTACT FINISH (All Platings Have .000050" NICKEL Underplate)

Contact Surface	Termination
Z = .000010" Gold	.000100" Tin/Lead
X = .000030" Gold	.000100" Tin/Lead
B = .000010" Gold	.000100" Pure Tin, Matte
C = .000030" Gold	.000100" Pure Tin, Matte

CONTACT CENTERS

E = .039" [1.00 mm]

MODIFICATIONS (Consult Factory)

Omit For Standard

MOUNTING STYLE (Opposite Page)

D = Flush Mounting
N = No Mounting
R = Metal Board Lock
S = Side Mounting
T = Flush Mounting With Threaded Insert

TERMINATION TYPE (Opposite Page)

HA = Staggered Dip Solder, Right Angle
READOUT (Opposite page)
D = Dual

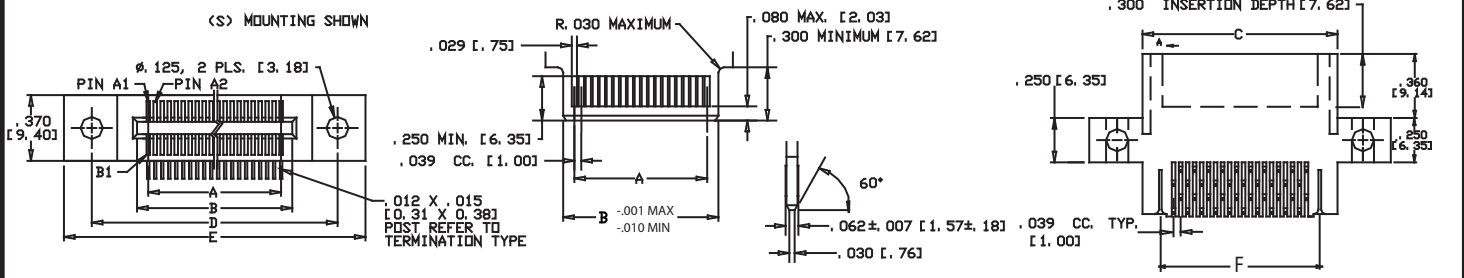
NUMBER OF CONTACT POSITIONS

02 thru 50

DIMENSIONS

— = Lead Free Plating
RoHS COMPLIANT

Dimensions in [] are in millimeters, all others in inches.



POSITIONS/ CONTACTS	INCHES						MILLIMETERS					
	A ±.005	B +.010-.000	C ±.015	D ±.010	E ±.020	F ±.010	A ±.13	B +.13-.00	C ±.38	D ±.25	E ±.51	F ±.25
2/4*	0.039	0.165	0.389	0.675	0.989	0.289	1.00	4.20	9.89	17.15	25.13	7.35
3/6*	0.079	0.205	0.429	0.715	1.029	0.329	2.00	5.20	10.89	18.15	26.13	8.35
4/8*	0.118	0.244	0.468	0.754	1.068	0.368	3.00	6.20	11.89	19.15	27.13	9.35
5/10	0.157	0.283	0.507	0.793	1.107	0.407	4.00	7.20	12.89	20.15	28.13	10.35
6/12	0.197	0.323	0.547	0.833	1.147	0.447	5.00	8.20	13.89	21.15	29.13	11.35
7/14	0.236	0.362	0.586	0.872	1.186	0.486	6.00	9.20	14.89	22.15	30.13	12.35
8/16	0.276	0.402	0.626	0.912	1.226	0.526	7.00	10.20	15.89	23.15	31.13	13.35
9/18	0.315	0.441	0.665	0.951	1.265	0.565	8.00	11.20	16.89	24.15	32.13	14.35
10/20	0.354	0.480	0.704	0.990	1.304	0.604	9.00	12.20	17.89	25.15	33.13	15.35
11/22	0.394	0.520	0.744	1.030	1.344	0.644	10.00	13.20	18.89	26.15	34.13	16.35
12/24	0.433	0.559	0.783	1.069	1.383	0.683	11.00	14.20	19.89	27.15	35.13	17.35
13/26	0.472	0.598	0.822	1.108	1.422	0.722	12.00	15.20	20.89	28.15	36.13	18.35
14/18	0.512	0.638	0.862	1.148	1.462	0.762	13.00	16.20	21.89	29.15	37.13	19.35
15/30	0.551	0.677	0.901	1.187	1.501	0.801	14.00	17.20	22.89	30.15	38.13	20.35
16/32	0.591	0.717	0.941	1.227	1.541	0.841	15.00	18.20	23.89	31.15	39.13	21.35
17/34	0.630	0.756	0.980	1.266	1.580	0.880	16.00	19.20	24.89	32.15	40.13	22.35
18/36	0.669	0.795	1.019	1.305	1.619	0.919	17.00	20.20	25.89	33.15	41.13	23.35
19/38	0.709	0.835	1.059	1.345	1.659	0.959	18.00	21.20	26.89	34.15	42.13	24.35
20/40	0.748	0.874	1.098	1.384	1.698	0.998	19.00	22.20	27.89	35.15	43.13	25.35
21/42	0.787	0.913	1.137	1.423	1.737	1.037	20.00	23.20	28.89	36.15	44.13	26.35
22/44	0.827	0.953	1.177	1.463	1.777	1.077	21.00	24.20	29.89	37.15	45.13	27.35
23/46	0.866	0.992	1.216	1.502	1.816	1.116	22.00	25.20	30.89	38.15	46.13	28.35
24/48	0.906	1.032	1.256	1.542	1.856	1.156	23.00	26.20	31.89	39.15	47.13	29.35
25/50	0.945	1.071	1.295	1.581	1.895	1.195	24.00	27.20	32.89	40.15	48.13	30.35
26/52	0.984	1.110	1.334	1.620	1.934	1.234	25.00	28.20	33.89	41.15	49.13	31.35
27/54	1.024	1.150	1.374	1.660	1.974	1.274	26.00	29.20	34.89	42.15	50.13	32.35
28/56	1.063	1.189	1.413	1.699	2.013	1.313	27.00	30.20	35.89	43.15	51.13	33.35
29/58	1.102	1.228	1.452	1.738	2.052	1.352	28.00	31.20	36.89	44.15	52.13	34.35
30/60	1.142	1.268	1.492	1.778	2.092	1.392	29.00	32.20	37.89	45.15	53.13	35.35
31/62	1.181	1.307	1.531	1.817	2.131	1.431	30.00	33.20	38.89	46.15	54.13	36.35
32/64	1.220	1.346	1.570	1.856	2.170	1.470	31.00	34.20	39.89	47.15	55.13	37.35
33/66	1.260	1.386	1.610	1.896	2.210	1.510	32.00	35.20	40.89	48.15	56.13	38.35
34/68	1.299	1.425	1.649	1.935	2.249	1.549	33.00	36.20	41.89	49.15	57.13	39.35
35/70	1.339	1.465	1.689	1.975	2.289	1.589	34.00	37.20	42.89	50.15	58.13	40.35
36/72	1.378	1.504	1.728	2.014	2.328	1.628	35.00	38.20	43.89	51.15	59.13	41.35
37/74	1.417	1.543	1.767	2.053	2.367	1.667	36.00	39.20	44.89	52.15	60.13	42.35
38/76	1.457	1.583	1.807	2.093	2.407	1.707	37.00	40.20	45.89	53.15	61.13	43.35
39/78	1.496	1.622	1.846	2.132	2.446	1.746	38.00	41.20	46.89	54.15	62.13	44.35
40/80	1.535	1.661	1.885	2.171	2.485	1.785	39.00	42.20	47.89	55.15	63.13	45.35
41/82	1.575	1.701	1.925	2.211	2.525	1.825	40.00	43.20	48.89	56.15	64.13	46.35
42/84	1.614	1.740	1.964	2.250	2.564	1.864	41.00	44.20	49.89	57.15	65.13	47.35
43/86	1.654	1.780	2.004	2.290	2.604	1.904	42.00	45.20	50.89	58.15	66.13	48.35
44/88	1.693	1.819	2.043	2.329	2.643	1.943	43.00	46.20	51.89	59.15	67.13	49.35
45/90	1.732	1.858	2.082	2.368	2.682	1.982	44.00	47.20	52.89	60.15	68.13	50.35
46/92	1.772	1.898	2.122	2.408	2.722	2.022	45.00	48.20	53.89	61.15	69.13	51.35
47/94	1.811	1.937	2.161	2.447	2.761	2.061	46.00	49.20	54.89	62.15	70.13	52.35
48/96	1.850	1.976	2.200	2.486	2.800	2.100	47.00	50.20	55.89	63.15	71.13	53.35
49/98	1.890	2.016	2.240	2.526	2.840	2.140	48.00	51.20	56.89	64.15	72.13	54.35
50/100	1.929	2.055	2.279	2.565	2.879	2.179	49.00	52.20	57.89	65.15	73.13	55.35

* Consult Factory

** For complete part number add termination type and mounting style from Part Number Coding (e.g. RZE40DHAD).

SULLINS®

PHONE 760.744.0125 • www.SullinsElectronics.com • FAX 760.744.6081