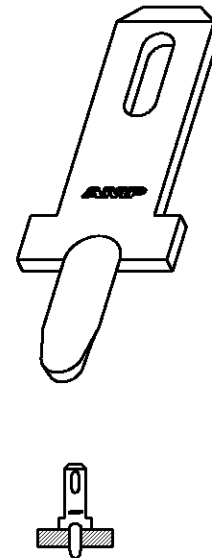
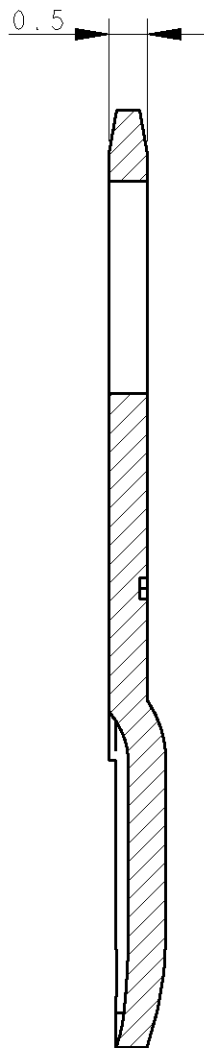
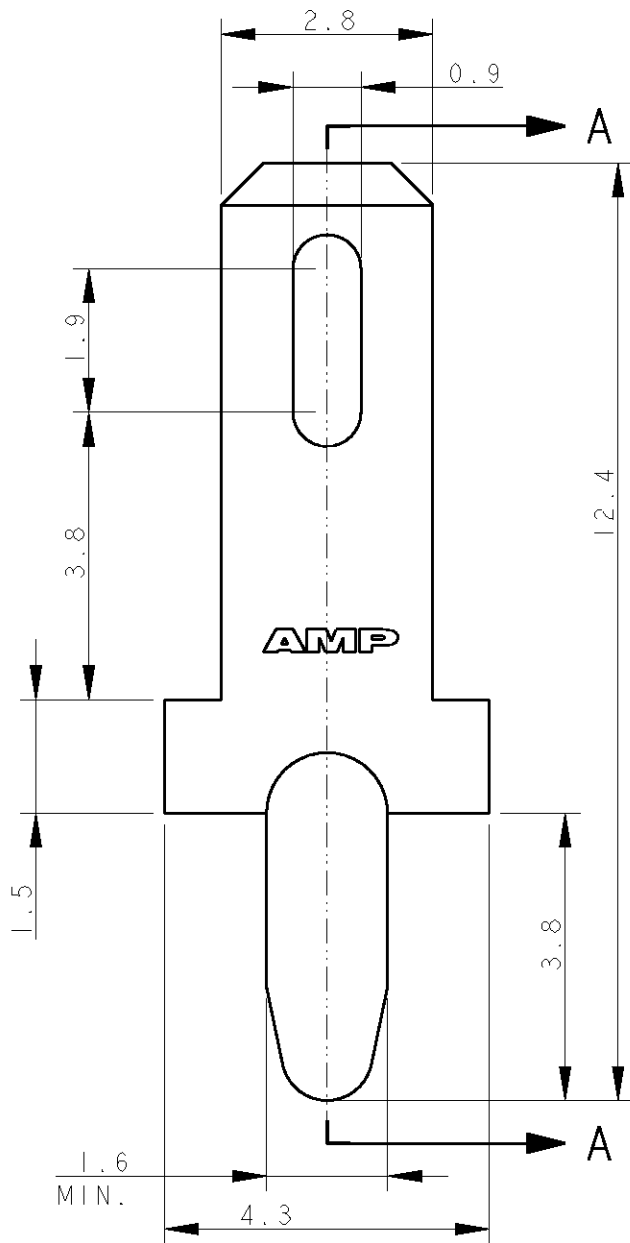


| LOC | DIST | REVISIONS |     |                  |           |     |      |
|-----|------|-----------|-----|------------------|-----------|-----|------|
|     |      | P         | LTR | DESCRIPTION      | DATE      | DWN | APVD |
|     |      |           | D1  | REDRAWN          | 03AUG2006 | HY  | GT   |
|     |      |           | D2  | ADDED SECTION AA | 04AUG2006 | HY  | GT   |



APPLICATION MODE  
SCALE 1:1

SECTION A - A

|               |          |          |
|---------------|----------|----------|
| TIN PLATED    | BRASS    | 735187-5 |
| TIN PLATED    |          | 735187-4 |
| SILVER PLATED |          | 735187-3 |
| TIN PLATED    |          | 735187-2 |
| PLAIN         |          | 735187-1 |
| FINISH        | MATERIAL | TE P/N   |

TO BE FIXED INTO  
1.40 +/- 0.05 Ø HOLE  
OF THE PRINTED CIRCUIT BOARD.

THIS DRAWING IS UNPUBLISHED. BY TYCO ELECTRONICS CORPORATION. ALL RIGHTS RESERVED. COPYRIGHT 20

|                                        |                  |           |                                                                          |           |            |               |
|----------------------------------------|------------------|-----------|--------------------------------------------------------------------------|-----------|------------|---------------|
| DIMENSIONS:<br>mm                      | DWN<br>H. YAALI  | 03AUG2006 | MATERIAL                                                                 | -         | FINISH     | -             |
|                                        | CHK<br>H. YAALI  | 03AUG2006 | Tyco Electronics AMP Italia S.p.A.<br>C.so F.lli Cervi, 15 COLLEGNO (TO) |           |            |               |
| TOLERANCES UNLESS OTHERWISE SPECIFIED: | APVD<br>G. TURCO | 03AUG2006 |                                                                          |           |            |               |
| 0 PLC ±-                               | PRODUCT SPEC     | -         | NAME<br>2.8 MM TAB FOR PC BOARD                                          |           |            |               |
| 1 PLC ±0.2                             | APPLICATION SPEC | -         | SIZE                                                                     | CAGE CODE | DRAWING NO | RESTRICTED TO |
| 2 PLC ±0.13                            |                  |           | A4                                                                       | 00779     | C=735187   | -             |
| 3 PLC ±0.013                           |                  |           | CUSTOMER DRAWING                                                         |           |            |               |
| 4 PLC ±0.0001                          | WEIGHT           | -         | SCALE                                                                    | 10:1      | SHEET      | 1 OF 1        |
| ANGLES ±-                              |                  |           | REV D2                                                                   |           |            |               |

