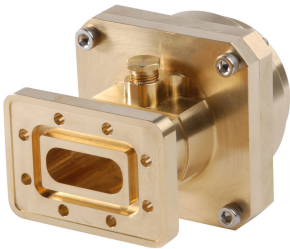


177SEM



Fixed-tuned PDR84 for elliptical waveguide 77

Product Classification

Product Type Elliptical waveguide connector

General Specifications

Attachment Method	Tab-flare Tool-flare
Body Style	Straight, fixed-tuned
Inner Contact Plating	Unplated
Interface	PDR84
Outer Contact Plating	Unplated
Pressurizable	Yes

Dimensions

Width	88.392 mm 3.48 in
Length	92.202 mm 3.63 in
Transition Length	55.118 mm 2.17 in
Waveguide Size	WR112 WG15 R84

Electrical Specifications

Insertion Loss, typical	0.01 dB
Operating Frequency Band	7.125 – 8.5 GHz
Peak Power at Frequency, maximum	63.00 kW @ 7.80 GHz

Material Specifications

Material Type Brass

Environmental Specifications

177SEM

Operating Temperature	-55 °C to +85 °C (-67 °F to +185 °F)
Storage Temperature	-55 °C to +85 °C (-67 °F to +185 °F)

Packaging and Weights

Weight, net	1.4 kg 3.086 lb
-------------	-------------------

Regulatory Compliance/Certifications

Agency	Classification
CHINA-ROHS	Below maximum concentration value
ISO 9001:2015	Designed, manufactured and/or distributed under this quality management system
REACH-SVHC	Compliant as per SVHC revision on www.commscope.com/ProductCompliance
ROHS	Compliant



* Footnotes

Insertion Loss, typical	0.05√/freq (GHz) (not applicable for elliptical waveguide)
-------------------------	--