



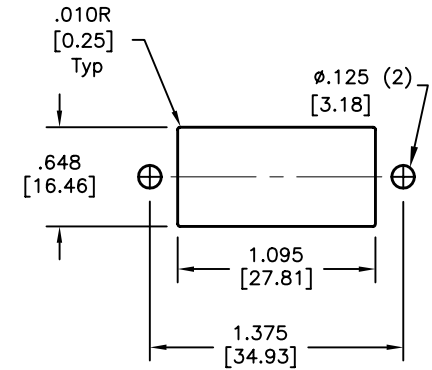
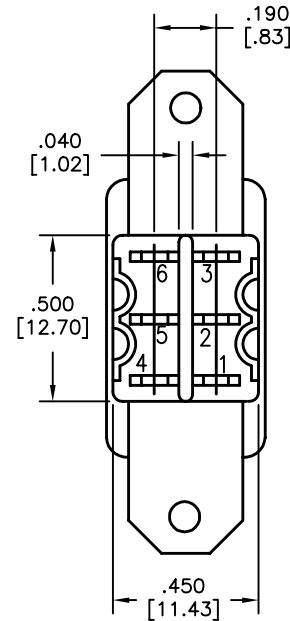
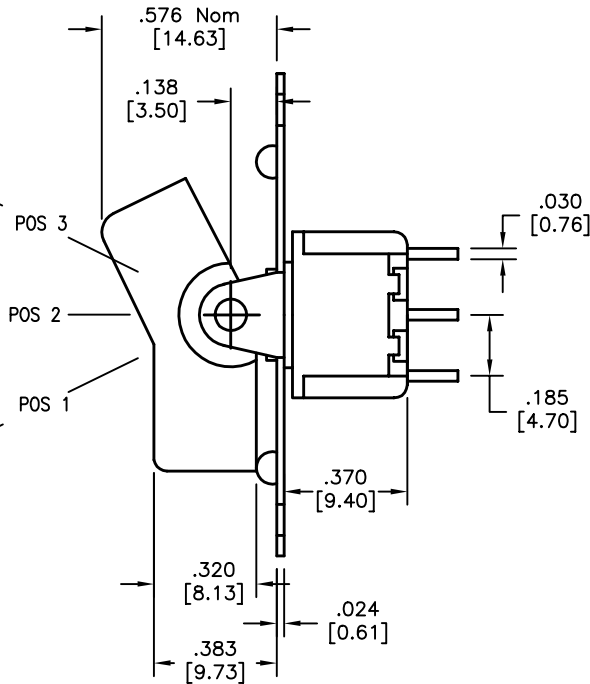
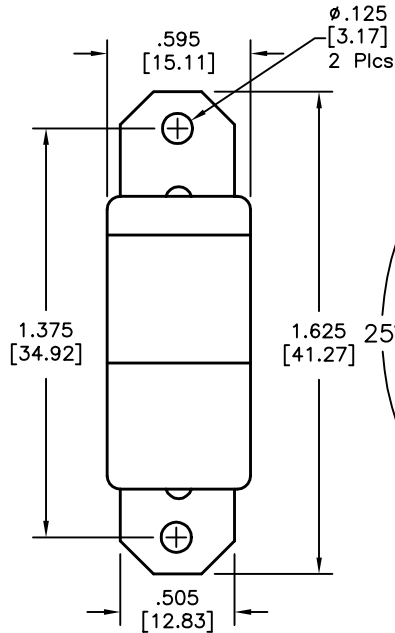
ALL RIGHTS RESERVED. NO PORTION OF THIS PUBLICATION, WHETHER IN WHOLE OR IN PART CAN BE REPRODUCED WITHOUT THE EXPRESS WRITTEN CONSENT OF SPC TECHNOLOGY.

SPC-F005.DWG

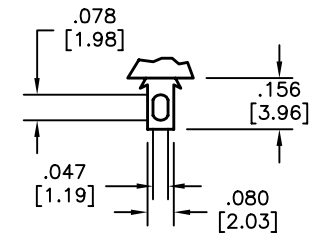
REVISIONS

DOC. NO. SPC-F005 * Effective: 7/8/02 * DCP No: 1398

| DCP # | REV | DESCRIPTION | DRAWN | DATE | CHECKD | DATE | APPRVD | DATE |
|-------|-----|-------------|-------|---------|--------|---------|--------|---------|
| 1501 | A | RELEASED | JWM | 9/22/03 | HO | 10/9/03 | DJC | 10/9/03 |
| | | | | | | | | |



PANEL MOUNTING



SOLDER LUG

SPECIFICATIONS

ELECTRICAL

CONTACT RATING: 5A @ 120 VAC OR
28 VDC, 2A @ 250 VAC
CONTACT RESISTANCE: 10 MILLIOHMS MAX.
INSULATION RESISTANCE: 1,000 MEGOHMS MIN. AT 500 VDC
DIELECTRIC STRENGTH: 1,000 VRMS

MECHANICAL

LIFE: 50,000 CYCLES

ENVIRONMENTAL

OPERATING TEMPERATURE: -30°C TO +85°C

MATERIAL

CASE: DAP, UL 94V-0
HOUSING: STAINLESS STEEL
ACTUATOR: NYLON, BLACK
BUSHING: BRASS, NICKEL PLATED
CONTACT/TERMINALS: COPPER ALLOY, SILVER PLATED

| | SWITCHING POSITION | | |
|-------------|----------------------|------|------------|
| | | | |
| | ON | NONE | ON |
| CONN. TERMS | 2-3 5-6 | OPEN | 2-1 5-4 |
| SCHEMATIC | DPDT 2 Comm. 5 Comm. | | |
| | | | |

DISCLAIMER:
ALL STATEMENTS AND TECHNICAL INFORMATION CONTAINED HEREIN ARE BASED UPON INFORMATION AND/OR TESTS WE BELIEVE TO BE ACCURATE AND RELIABLE. SINCE CONDITIONS OF USE ARE BEYOND OUR CONTROL, THE USER SHALL DETERMINE THE SUITABILITY OF THE PRODUCT FOR THE INTENDED USE AND ASSUME ALL RISK AND LIABILITY WHATSOEVER IN CONNECTION THEREWITH.

TOLERANCES:

UNLESS OTHERWISE SPECIFIED, DIMENSIONS ARE FOR REFERENCE PURPOSES ONLY.

DRAWN BY:

Jeff McVicker

DATE:

9/22/03

CHECKED BY:

Hisham Odish

DATE:

10/9/03

APPROVED BY:

Daniel Carey

DATE:

10/9/03

DRAWING TITLE:

Rocker Switch, DPDT

SIZE

A

DWG. NO.

SPC12398

ELECTRONIC FILE

53H6657.dwg

REV

A

SCALE:

NTS

U.O.M.: INCHES [mm]

SHEET:

1 OF 1