

NOTES:

1. REPRESENTS A CRITICAL DIMENSION.
2. MINIMUM PUSHOUT FORCE: 16 OZ FOR TERMINALS, 12 OZ FOR WELD TABS, AND 8 OZ FOR LOCKING CLIPS.
3. MEASURED FROM BEND.
4. MAXIMUM TERMINAL BURR: .003 [.08].
5. MAXIMUM HEIGHT VARIATION BETWEEN ANY TWO PINS: .005 [.13].
6. DUE TO THE HIGH AMOUNT OF INSERTION FORCE NEEDED, THE -LC OPTION IS NOT COMPATIBLE WITH AUTO PLACEMENT. SAMTEC RECOMMENDS MANUAL PLACEMENT FOR ALL ASSEMBLIES WITH THE -LC OPTION.

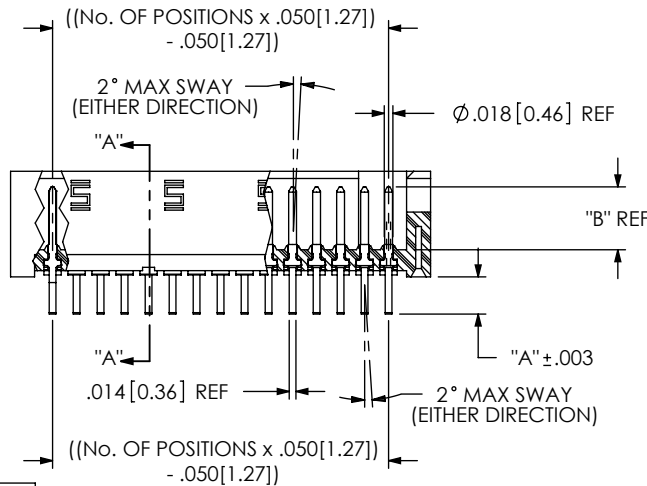
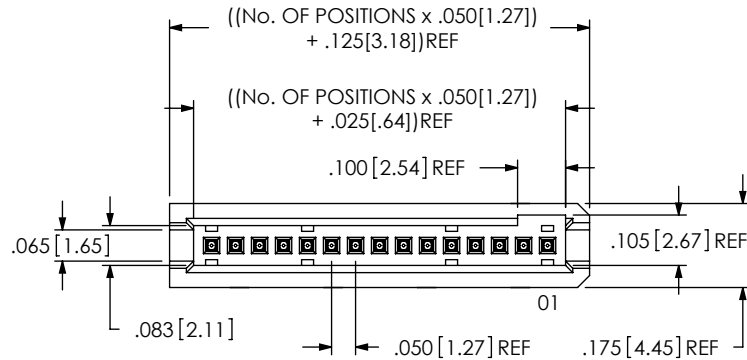


FIG 1
(TFM-115-01-X-S-XX SHOWN)

TABLE 1	
POSITION	COPLANARITY
-02 THRU -29	.004 [.10]
-030 THRU -39	.006 [.15]
-40 THRU -50	.008 [.20]

TABLE 2					
LEAD STYLE	BODY	"A"	"B"	"C"	"E"
-01	TFM-XX-S-01-XX	.078 [1.98]	.131 [3.33]	.428 [10.87]	.303 [7.70]
-02	TFM-XX-S-01-XX	N/A	.131 [3.33]	.428 [10.87]	.231 [5.87]
-03	TFM-XX-S-01-XX	.111 [3.33]	.139 [3.53]	.645 [16.38]	.356 [9.04]

TFM-1XX-XX-X-S-XX

No OF POSITIONS
ALL POSITIONS AVAILABLE
-02 THRU -50

LEAD STYLE

- 01: T-1R16-01-X-2 THROUGH HOLE
- 02: T-1R16-01-X-2 SURFACE MOUNT
- 03: T-1R16-10-X THROUGH HOLE

PLATING SPECIFICATIONS

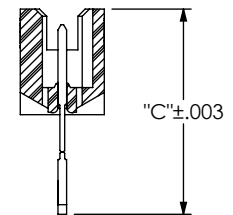
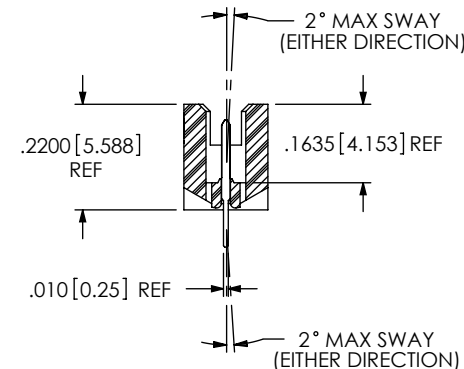
- S: 30μ" SELECTIVE GOLD IN CONTACT AREA, MATTE TIN ON TAIL
- F: 3μ" FLASH GOLD IN CONTACT AREA, MATTE TIN ON TAIL
- L: 15μ" LIGHT GOLD IN CONTACT AREA, MATTE TIN ON TAIL
- H: 30μ" HEAVY GOLD IN CONTACT AREA, 3μ" GOLD ON TAIL
- T: MATTE TIN CONTACT AND TAIL

OPTION

- A: ALIGNMENT PIN (USE TFM-XX-S-01-A) (NOT AVAILABLE WITH -WT OPTION) (SEE FIG 5, SHEET 2)
- LC: LOCKING CLIP (USE LC-05-TM) (NOT AVAILABLE WITH -WT OPTION) (SEE FIG 7, SHEET 3) (SEE NOTE 6)
- P: PICK AND PLACE PAD (USE PPP-15) (SEE FIG 6, SHEET 2) (ONLY AVAILABLE ON -08 THRU -50 POSITIONS)
- K: POLYIMIDE FILM (SEE FIG 3, SHEET 2) (USE K-DOT-.217-.313-.005)
- WT: WELD TABS (USE WT-25-07-T) (SEE FIG 4, SHEET 2) (AVAILABLE ON -02 THRU -30 POS ONLY) (NOT AVAILABLE WITH -A OR -LC OPTIONS)
- TR: TAPE & REEL (SEE SHEET 3, TAPE AND REEL VIEW)
- **SN: SOLDER NAIL (USE WT-27-03) (NOT AVAILABLE WITH -A, -LC, OR -WT OPTIONS) (SEE FIG 8, SHEET 3)

BODY SPECIFICATION
-S: SINGLE ROW
(USE TFM-XX-S-XX-XX)

** NOT TOOLED



UNLESS OTHERWISE SPECIFIED, DIMENSIONS ARE IN INCHES.

TOLERANCES ARE:

DECIMALS ANGLES
.XX: ±.01 [.3] 2°
.XXX: ±.005 [.13]
.XXXX: ±.0020 [.051]

PROPRIETARY NOTE

THIS DOCUMENT CONTAINS CONFIDENTIAL AND PROPRIETARY INFORMATION AND ALL DESIGN, MANUFACTURING, REPRODUCTION, USE, PATENT RIGHTS AND SALES RIGHTS ARE EXPRESSLY RESERVED BY SAMTEC, INC. THIS DOCUMENT SHALL NOT BE DISCLOSED, IN WHOLE OR PART, TO ANY UNAUTHORIZED PERSON OR ENTITY NOR REPRODUCED, TRANSFERRED OR INCORPORATED IN ANY OTHER PRODUCT IN ANY MANNER WITHOUT THE EXPRESS WRITTEN CONSENT OF SAMTEC, INC.

MATERIAL: DO NOT SCALE DRAWING SHEET SCALE: 1:0.4
INSULATOR: LCP, UL 94 V0, COLOR: BLACK
TERMINAL: PHOSPHOR BRONZE

samtec

520 PARK EAST BLVD, NEW ALBANY, IN 47150
PHONE: 812-944-6733 FAX: 812-948-5047
e-Mail: info@SAMTEC.com code 55322

DESCRIPTION:
.050 C.L. SINGLE ROW SHROUDED TERMINAL STRIP

DWG. NO. TFM-1XX-XX-X-S-XX

BY: D. SCHMELZ 8/21/2008 SHEET 1 OF 3

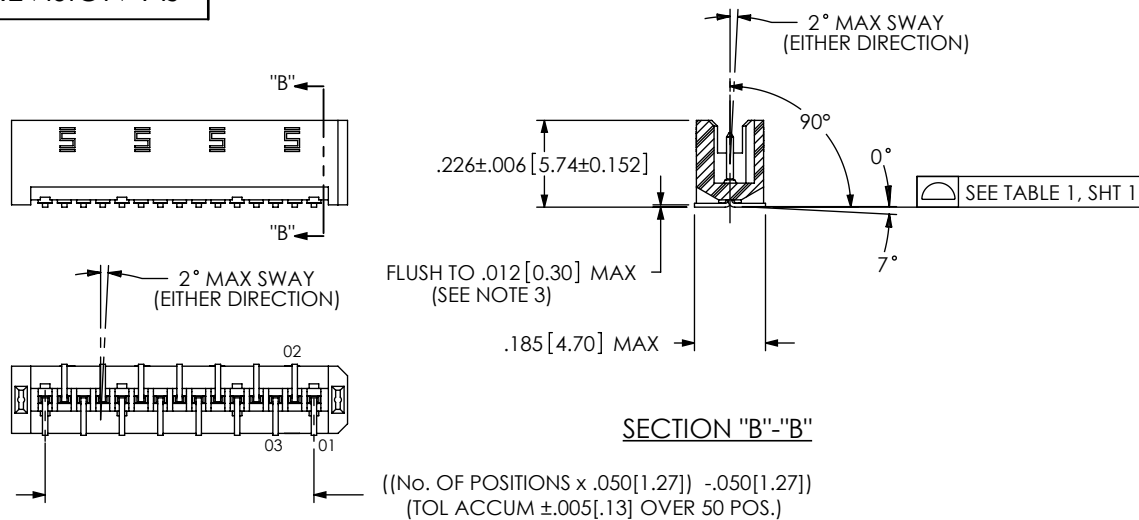


FIG 2
SURFACE MOUNT
(TFM-115-02-X-S-XX SHOWN)
(DIFFERENT AS SHOWN, OTHERWISE SAME AS FIG 1)

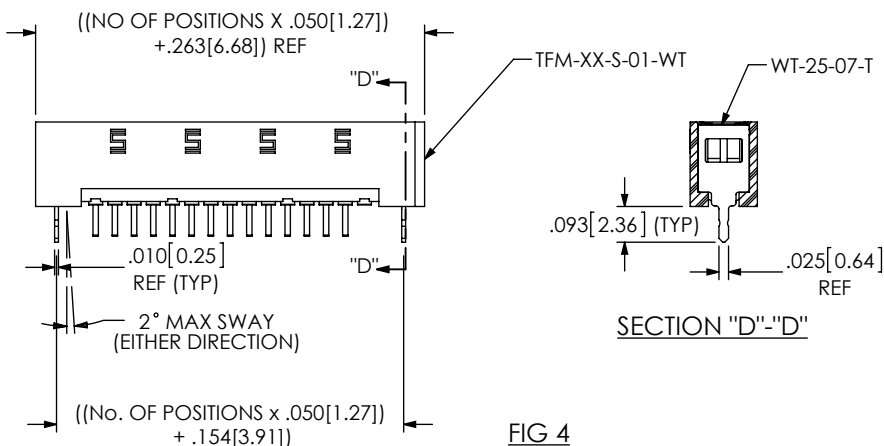


FIG 4
-WT OPTION
(TFM-114-01-X-S-WT SHOWN)
(DIFFERENT AS SHOWN, OTHERWISE SAME AS FIG 1)

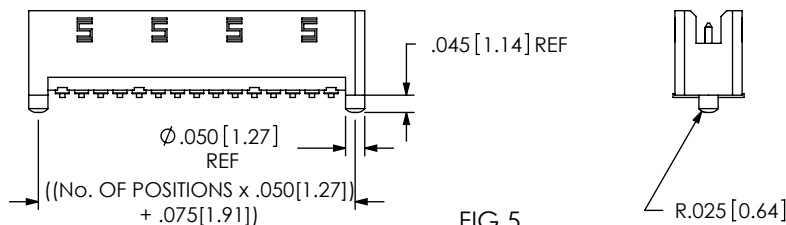


FIG 5
-A OPTION
(TFM-115-02-X-S-A SHOWN)
(DIFFERENT AS SHOWN, OTHERWISE SAME AS FIG 1)

NOTE: "R" = OVERALL LENGTH REF
"S" = ((("R" - .216 [5.49]) / 2) ±.020 [51])

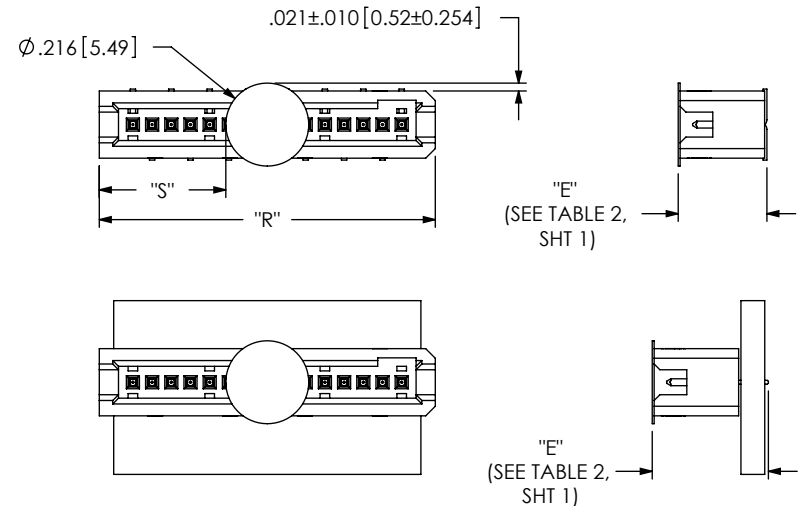


FIG 3
-K: POLYIMIDE FILM PAD
(TFM-115-02-X-S-K SHOWN)

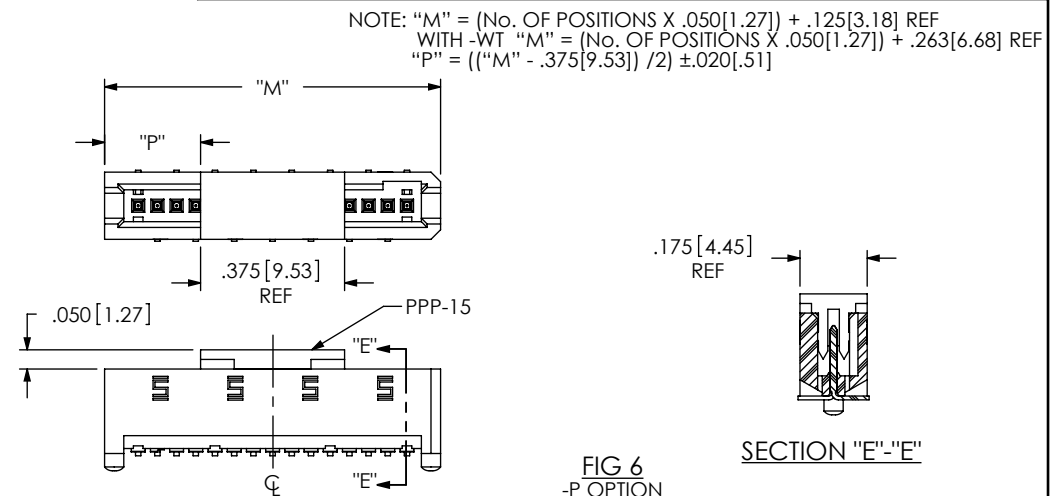
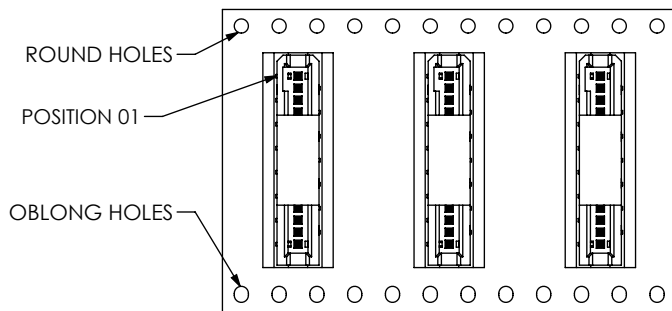
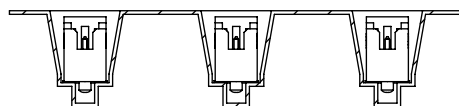


FIG 6
-P OPTION
(TFM-115-02-X-S-P SHOWN)
(DIFFERENT AS SHOWN, OTHERWISE SAME AS FIG 1)
(PAD TO BE POSITIONED ON CL AS SHOWN)

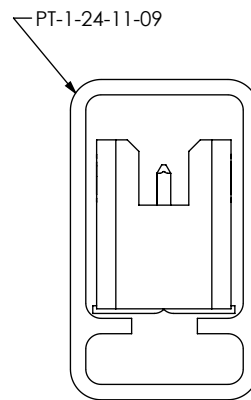
<p>PROPRIETARY NOTE</p> <p>THIS DOCUMENT CONTAINS CONFIDENTIAL AND PROPRIETARY INFORMATION AND ALL DESIGN, MANUFACTURING, REPRODUCTION, USE, PATENT RIGHTS AND SALES RIGHTS ARE EXPRESSLY RESERVED BY SAMTEC, INC. THIS DOCUMENT SHALL NOT BE DISCLOSED, IN WHOLE OR PART, TO ANY UNAUTHORIZED PERSON OR ENTITY NOR REPRODUCED, TRANSFERRED OR INCORPORATED IN ANY OTHER PROJECT IN ANY MANNER WITHOUT THE EXPRESS WRITTEN CONSENT OF SAMTEC, INC.</p>	<p>samtec</p> <p>520 PARK EAST BLVD, NEW ALBANY, IN 47150 PHONE: 812-944-6733 FAX: 812-948-5047 e-Mail: info@SAMTEC.com code 55322</p>
<p>DO NOT SCALE DRAWING</p>	<p>DESCRIPTION: .050 C.L. SINGLE ROW SHROUDED TERMINAL STRIP</p>
<p>SHEET SCALE: 2:1</p>	<p>DWG. NO. TFM-1XX-XX-X-S-XX</p>
<p></p>	<p>BY: D. SCHMELZ 8/21/2008 SHEET 2 OF 3</p>



USER DIRECTION OF UN-REELING
POCKET NOT DETAILED



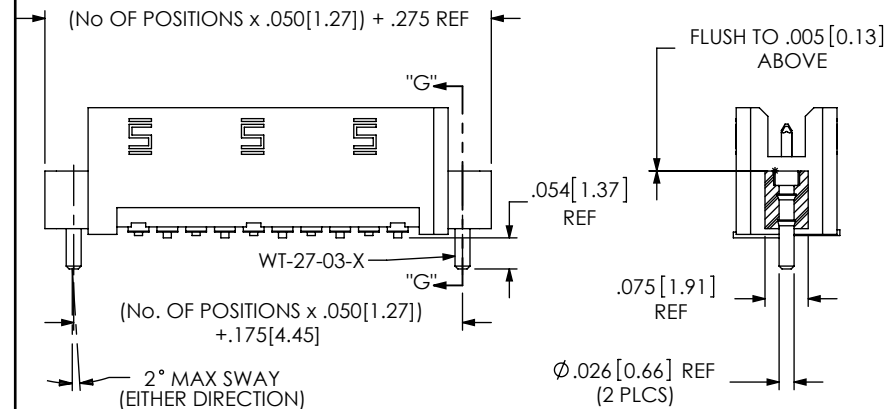
TAPE AND REEL VIEW



PACKAGING TUBE VIEW

NOTES:

1. USE PT-1-24-11-09 TUBE AND (2) TP-09.
2. USE PT-1-24-03-09 TUBE AND (2) TP-09 FOR -P AND -K OPTIONS.
3. LOAD TUBE WITH 1ST POSITION IN SAME DIRECTION AS ARROW



SECTION "G"-G"
SCALE 3 : 1

FIG 8
** -SN OPTION
(TFM-110-02-X-S-SN SHOWN)
(DIFFERENT AS SHOWN, OTHERWISE SAME AS FIG 1)

** NOT TOOLED

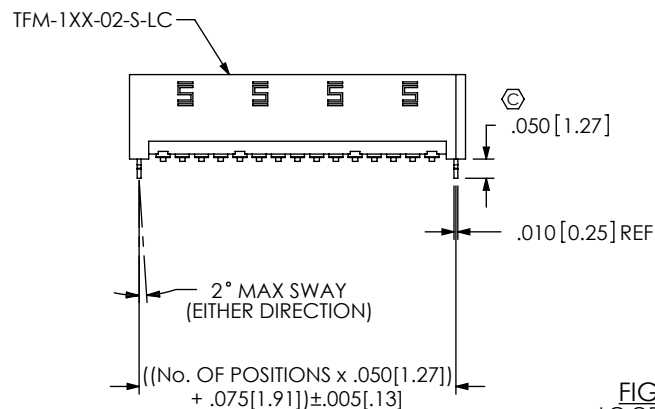
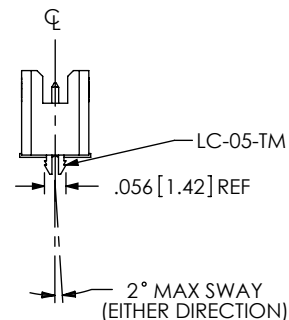


FIG 7
-LC OPTION
(TFM-115-01-X-S-LC SHOWN)
(DIFFERENT AS SHOWN, OTHERWISE SAME AS FIG 2)



* INSPECT ONLY WHEN APPLICABLE WITH RESPECT TO ASSEMBLY OPTION

PROPRIETARY NOTE
THIS DOCUMENT CONTAINS CONFIDENTIAL AND PROPRIETARY INFORMATION AND ALL DESIGN, MANUFACTURING, REPRODUCTION, USE, PATENT RIGHTS AND SALES RIGHTS ARE EXPRESSLY RESERVED BY SAMTEC, INC. THIS DOCUMENT SHALL NOT BE DISCLOSED, IN WHOLE OR PART, TO ANY UNAUTHORIZED PERSON OR ENTITY NOR REPRODUCED, TRANSFERRED OR INCORPORATED IN ANY OTHER PROJECT IN ANY MANNER WITHOUT THE EXPRESS WRITTEN CONSENT OF SAMTEC, INC.

DO NOT SCALE DRAWING

SHEET SCALE: 2:1

samtec

520 PARK EAST BLVD, NEW ALBANY, IN 47150
PHONE: 812-944-6733 FAX: 812-948-5047
e-Mail info@SAMTEC.com code 55322

DESCRIPTION:
.050 C.L. SINGLE ROW SHROUDED TERMINAL STRIP

DWG. NO.
TFM-1XX-XX-X-S-XX

BY: D. SCHMELZ 8/21/2008 SHEET 3 OF 3