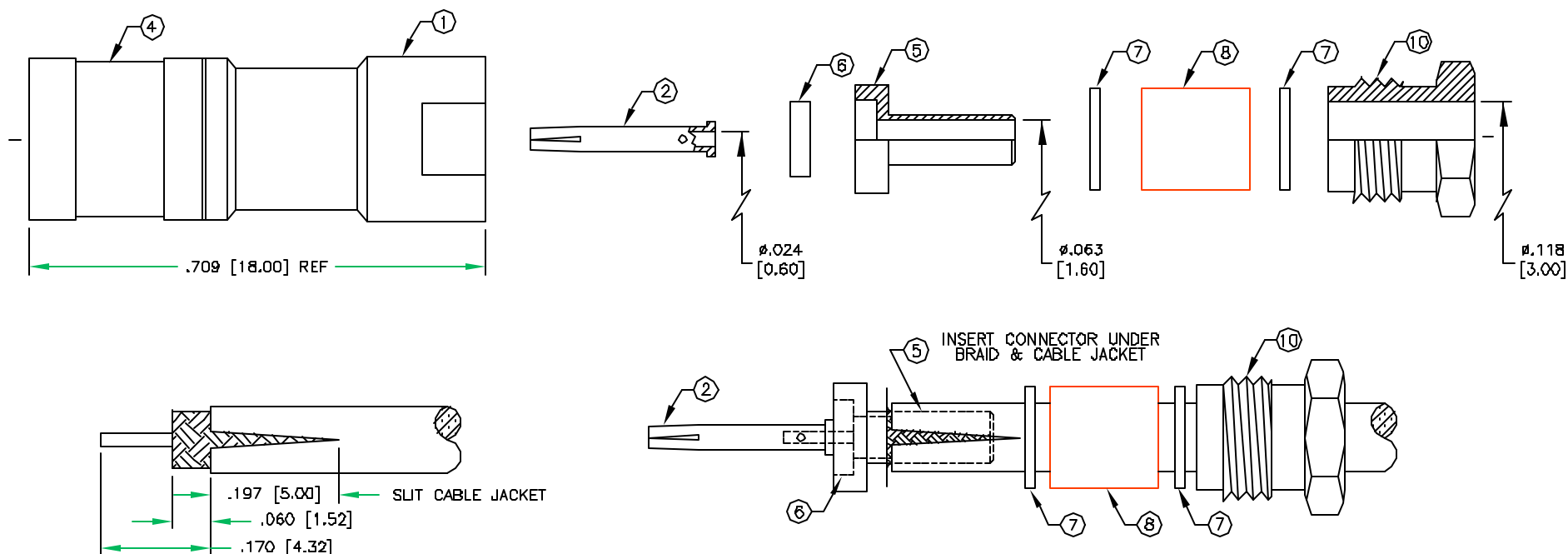


REVISIONS					DOC. NO. SPC-F005, Total Pages: 2 Effective: 7/15/97. DCP No: 229 Supersedes DCP No: 103				
DCP #	REV	DESCRIPTION	DRAWN	DATE	CHECKD	DATE	APPRVD	DATE	
129	A	RELEASED	DJC	3/10/98	JC	7/15/98	JWM	7/15/98	

APPROX LENGTH OF ASSEMBLED CONNECTOR: .850 [21.60]



**DISCLAIMER:**  
ALL STATEMENTS AND TECHNICAL INFORMATION CONTAINED HEREIN ARE BASED UPON INFORMATION AND/OR TESTS WE BELIEVE TO BE ACCURATE AND RELIABLE. SINCE CONDITIONS OF USE ARE BEYOND OUR CONTROL, THE USER SHALL DETERMINE THE SUITABILITY OF THE PRODUCT FOR THE INTENDED USE AND ASSUME ALL RISK AND LIABILITY WHATSOEVER IN CONNECTION THEREWITH.

UNLESS OTHERWISE SPECIFIED, DIMENSIONS ARE FOR REFERENCE PURPOSES ONLY.

DRAWN BY:	DATE:
DANIEL CAREY	3/10/98
CHECKED BY:	DATE:
JOHN COLE	7/15/98
APPROVED BY:	DATE:
JEFF MCVICKER	7/15/98

DRAWING TITLE:

**SMB CLAMP PLUG**

SIZE	DWG. NO.	ELECTRONIC FILE	REV
A	1522	92N3368.DWG	A
SCALE: NTS	U.O.M.: INCHES [mm]	SHEET: 1 OF 2	



**SPC TECHNOLOGY**

## SPECIFICATIONS:

IMPEDANCE: 50 OHMS  
WORKING VOLTAGE: 400 VRMS @ SEA LEVEL  
FREQUENCY RANGE: 0-4 GHz  
INSERTION LOSS:  $\leq .3$  dB MAX @ 1.5 GHz  
VSWR MAX: 1.3:1 @ 4 GHz  
FOR RG-174, 188, 188A, 316/U, ALPHA 9174, 9316,  
BELDEN 8216, 83269, 83284, 84316 & TIMES LMR-100 CABLE

10	BACK NUT	1	BRASS	NICKEL
9	RETAINING RING	1	BeCu	NONE
8	GASKET	1	S.I.RUBBER	RED
7	WASHER	2	BRASS	NICKEL
6	DIELECTRIC	1	TEFLON	NONE
5	SLEEVE	1	BRASS	NICKEL
4	SHELL	1	BRASS	NICKEL
3	DIELECTRIC	1	TEFLON	NONE
2	CONTACT	1	BeCu	GOLD
1	BODY	1	BRASS	NICKEL
ITEM	DESCRIPTION	QTY	MATERIAL	FINISH