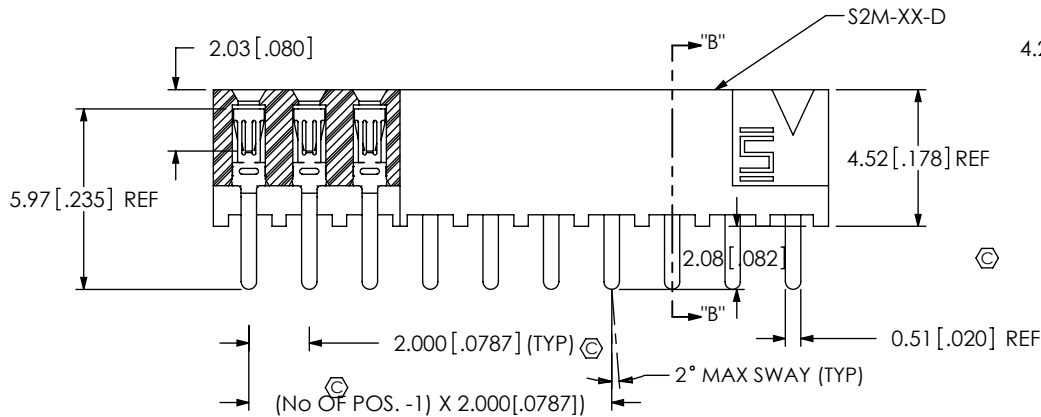
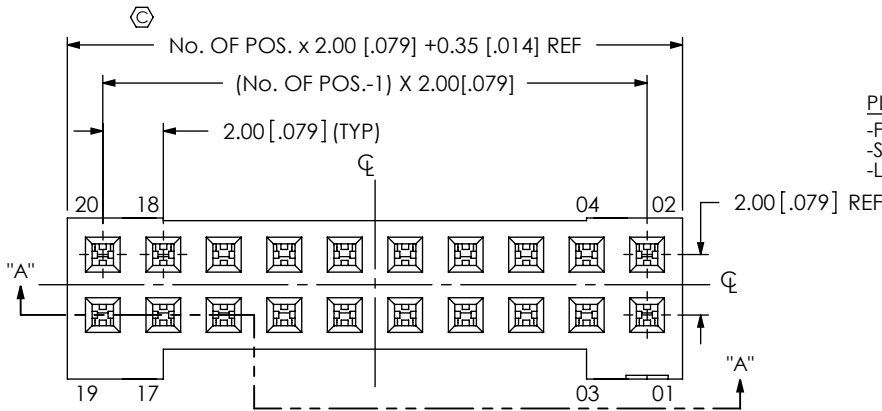


DESIGNED & DIMENSIONED  
IN MILLIMETERS[INCHES]

DO NOT  
SCALE FROM  
THIS PRINT



SECTION "A"-"A"

FIG 1  
S2M-110-0T-XX-D SHOWN

**S2M-1XX-XX-X-D-XX-XX**

**No OF POSITIONS**  
-05, -07, -10, -15, -20, -25, & -30 (PER ROW)  
AVAILABLE AS STANDARD; OTHER SIZES  
BETWEEN -05 THRU -50 AVAILABLE AS ASO

**LEAD STYLE**  
-01: THROUGH HOLE  
(USE C-56-01-X)  
-02: SURFACE MOUNT  
(USE C-56-05-X)

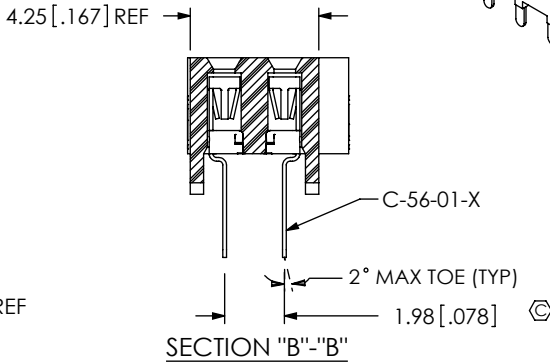
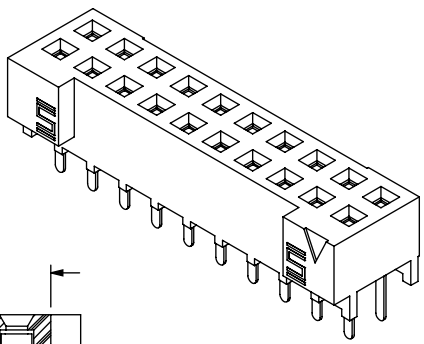
**PLATING SPECIFICATION**  
-F: FLASH GOLD SELECTIVE (USE C-56-XX-F)  
-S: SELECTIVE GOLD (USE C-56-XX-S)  
-L: LIGHT SELECTIVE (USE C-56-XX-L)

**PACKAGING**  
-TR: TAPE & REEL

**OPTION**  
-K: POLYIMIDE FILM PAD  
(USE K-500-300)  
-LC: LOCKING CLIP  
(USE LC-07-TM)  
[E] \*-SD: SCREW DOWN  
(NOT AVAILABLE WITH  
-LC OPTION)  
(SEE FIG 4 & FIG 5, SHT 3)


**ROW SPECIFICATION**  
-D: DOUBLE ROW

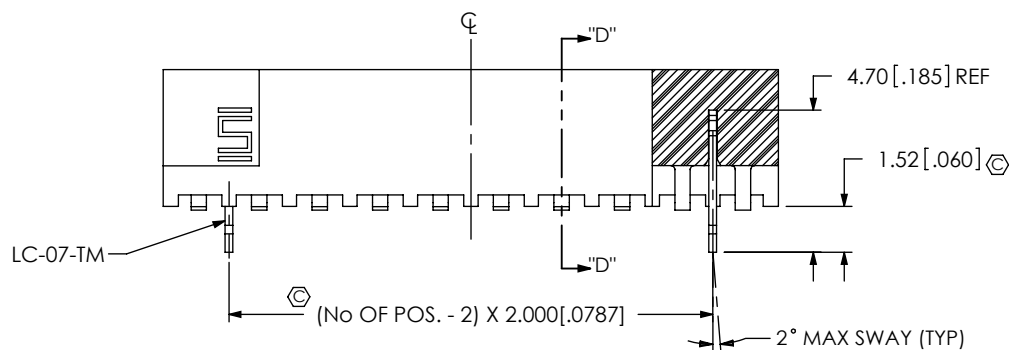
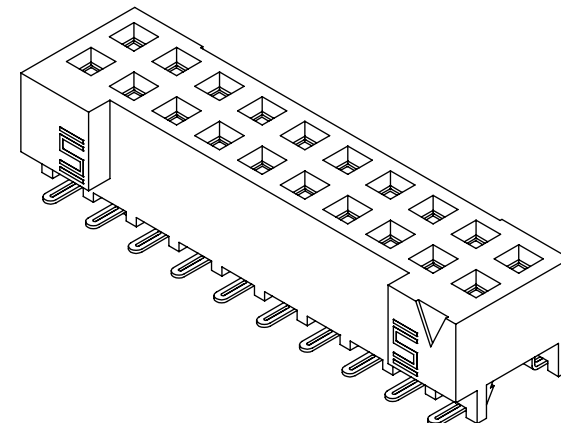
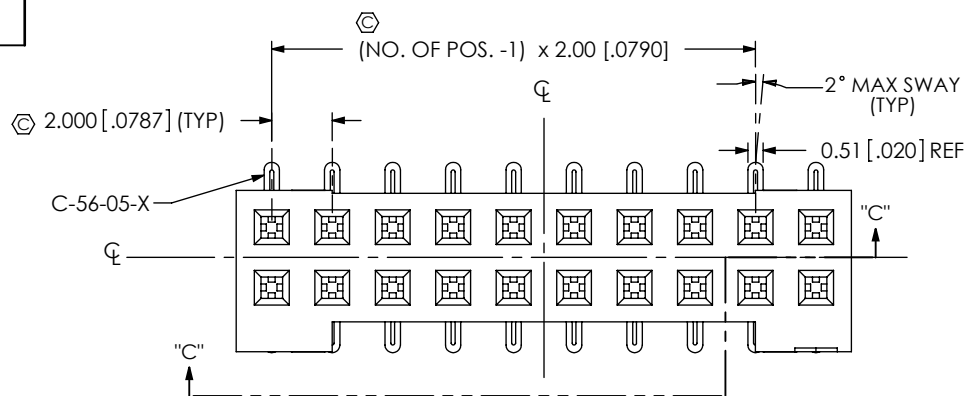
(\* = NOT RELEASED FOR PRODUCTION)



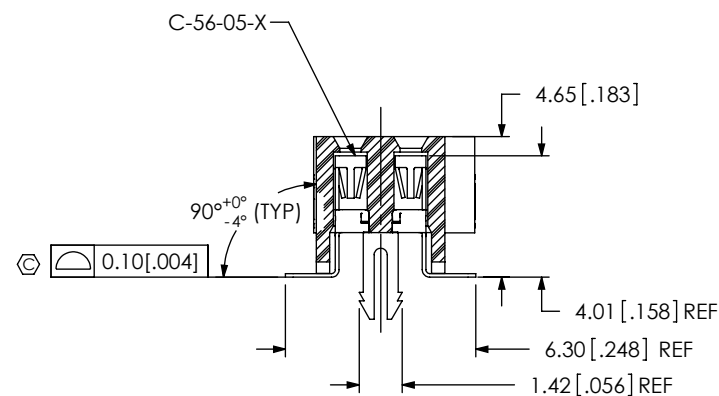
SECTION "B"-"B"

- NOTES:
1.  $\odot$  REPRESENTS A CRITICAL DIMENSION.
  2. MINIMUM RETENTION FORCE: 4.45 N [1.000 LB.].
  3. "-LC" OPTION FOR A -02 POSITION WILL HAVE ONLY ONE LOCKING CLIP (LC-07-X).
  4. MINIMUM RETENTION FOR LOCKING CLIP: 3.3 N [0.75 LB.].

UNLESS OTHERWISE SPECIFIED, DIMENSIONS ARE IN MILLIMETERS. TOLERANCES ARE:		PROPRIETARY NOTE THIS DOCUMENT CONTAINS INFORMATION CONFIDENTIAL AND PROPRIETARY TO SAMTEC, INC. AND SHALL NOT BE REPRODUCED OR TRANSFERRED TO OTHER DOCUMENTS OR DISCLOSED TO OTHERS OR USED FOR ANY PURPOSE OTHER THAN THAT WHICH IT WAS OBTAINED WITHOUT THE EXPRESSED WRITTEN CONSENT OF SAMTEC, INC.		 520 PARK EAST BLVD, NEW ALBANY, IN 47150 PHONE: 812-944-6733 FAX: 812-948-5047 e-Mail: info@SAMTEC.com code: 55322
DECIMALS	ANGLES			
X.X: ±0.3[.01]	2°			
X.XX: ±0.13[.005]				
X.XXX: ±0.051[.0020]				
MATERIAL: DO NOT SCALE DRAWING		SHEET SCALE: 4:1		DESCRIPTION: 2mm DOUBLE ROW SOCKET STRIP
LCP COLOR: BLACK CONTACT: BeCu				DWG. NO. S2M-1XX-XX-X-D-XX-XX
F:\DWG\MISC\MKTG\S2M-1XX-XX-X-D-XX-XX-MKT.SLDRW		BY: T NEWTON 09-16-2010		SHEET 1 OF 4



SECTION "C"- "C"



SECTION "D"- "D"

FIG 2  
S2M-110-02-X-D-LC SHOWN  
(SAME AS FIG 1, EXCEPT AS SHOWN)

PROPRIETARY NOTE

THIS DOCUMENT CONTAINS INFORMATION  
CONFIDENTIAL AND PROPRIETARY TO  
SAMTEC, INC. AND SHALL NOT BE REPRODUCED  
OR TRANSFERRED TO OTHER DOCUMENTS OR  
DISCLOSED TO OTHERS OR USED FOR ANY  
PURPOSE OTHER THAN THAT WHICH IT WAS  
OBTAINED WITHOUT THE EXPRESSED WRITTEN  
CONSENT OF SAMTEC, INC.

DO NOT SCALE DRAWING

SHEET SCALE: 4:1

**samtec**

520 PARK EAST BLVD, NEW ALBANY, IN 47150  
PHONE: 812-944-6733 FAX: 812-948-5047  
e-Mail: info@SAMTEC.com code: 55322

DESCRIPTION:

2mm DOUBLE ROW SOCKET STRIP

DWG. NO.

S2M-1XX-XX-X-D-XX-XX

BY: T NEWTON 09-16-2010

SHEET 2 OF 4

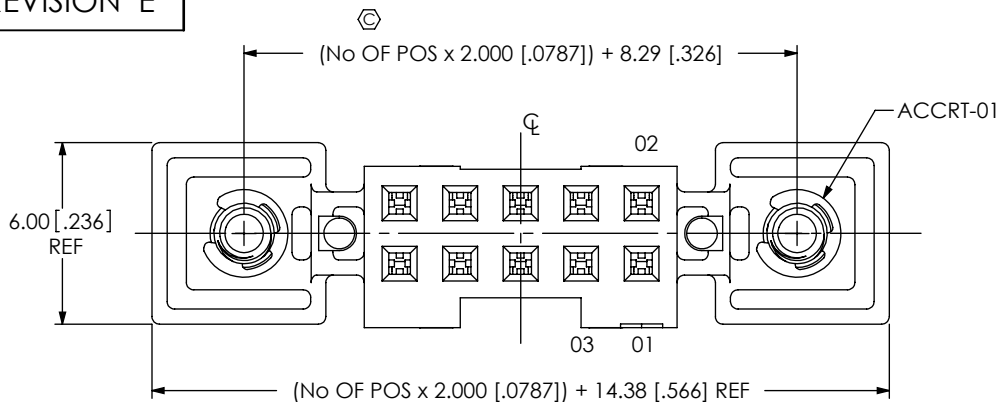
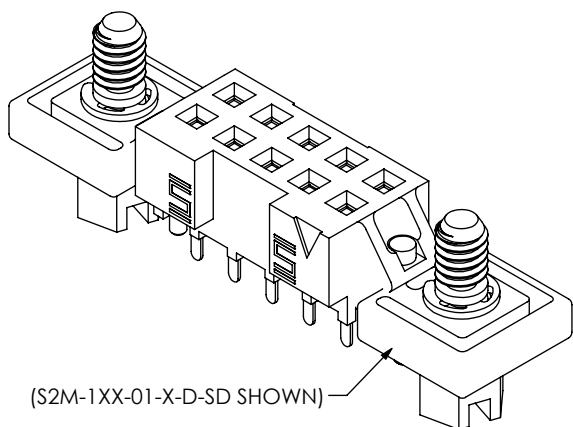
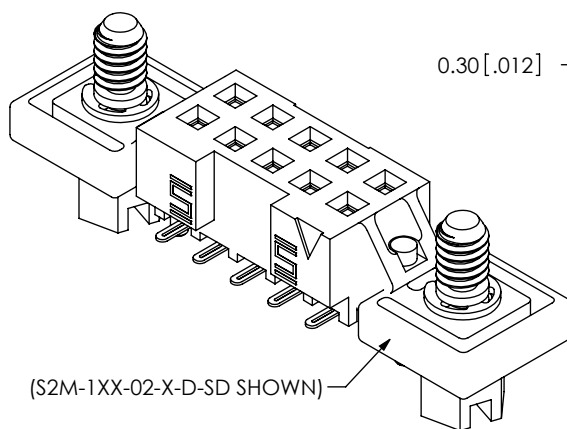


FIG 4  
S2M-105-01-X-D-SD SHOWN  
(SAME AS FIG 1, EXCEPT AS SHOWN)  
(NOT RELEASED FOR PRODUCTION)



(S2M-1XX-01-X-D-SD SHOWN)



(S2M-1XX-02-X-D-SD SHOWN)

F:\DWG\WISC\MKTG\S2M-1XX-XX-X-D-XX-XX-MKT.SLDDRW

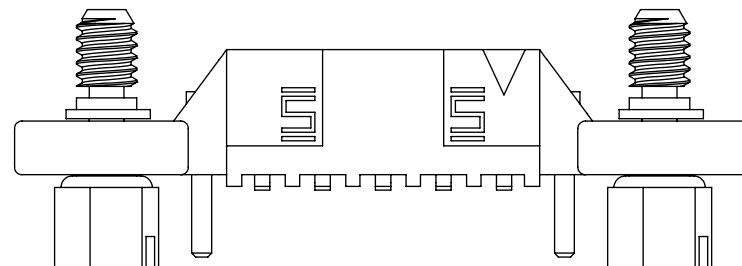
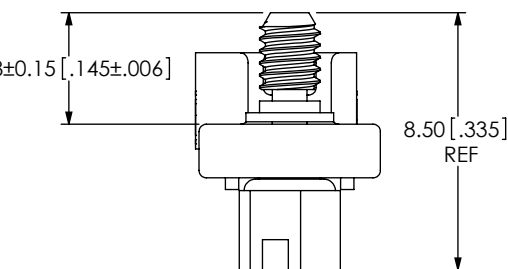
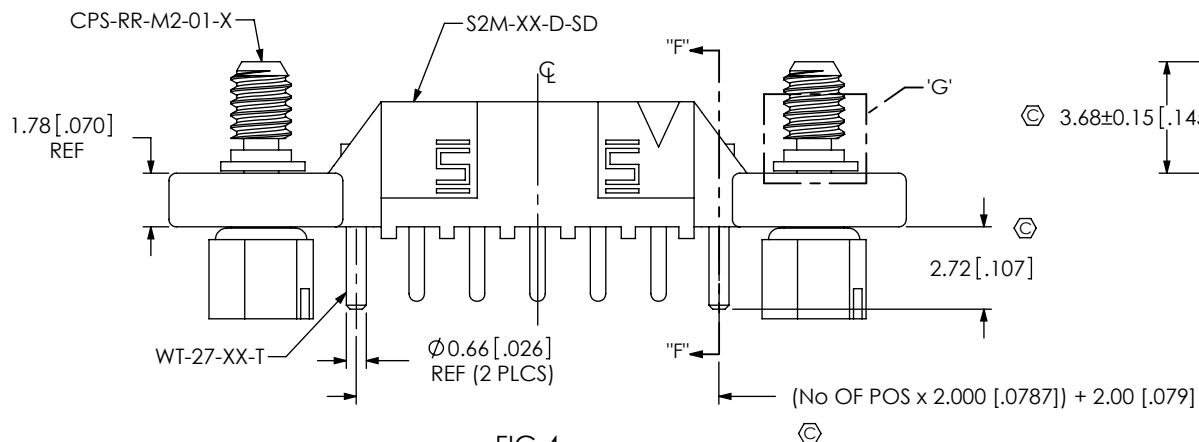
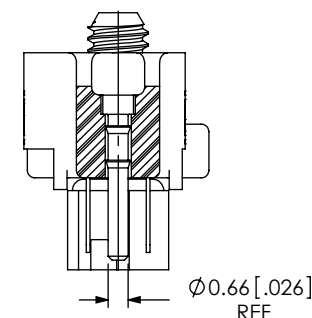


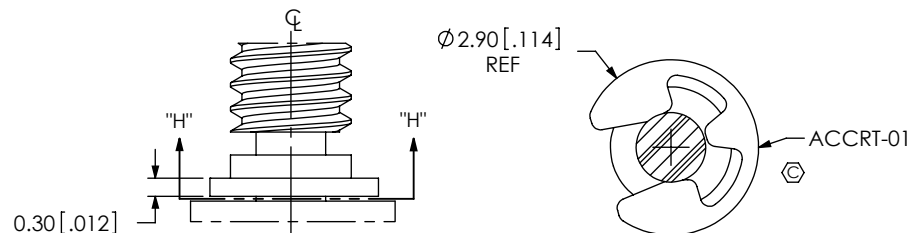
FIG 5  
S2M-105-02-X-D-SD SHOWN  
(SAME AS FIG 4, EXCEPT AS SHOWN)  
(NOT RELEASED FOR PRODUCTION)



DETAIL 'G'  
SCALE 8 : 1



SECTION "F"- "F"



SECTION "H"- "H"  
SCALE 8 : 1

PROPRIETARY NOTE  
THIS DOCUMENT CONTAINS INFORMATION  
CONFIDENTIAL AND PROPRIETARY TO  
SAMTEC, INC. AND SHALL NOT BE REPRODUCED  
OR TRANSFERRED TO OTHER DOCUMENTS OR  
DISCLOSED TO OTHERS OR USED FOR ANY  
PURPOSE OTHER THAN THAT WHICH IT WAS  
OBTAINED WITHOUT THE EXPRESSED WRITTEN  
CONSENT OF SAMTEC, INC.

DO NOT SCALE DRAWING

SHEET SCALE: 4:1

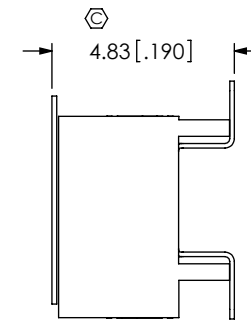
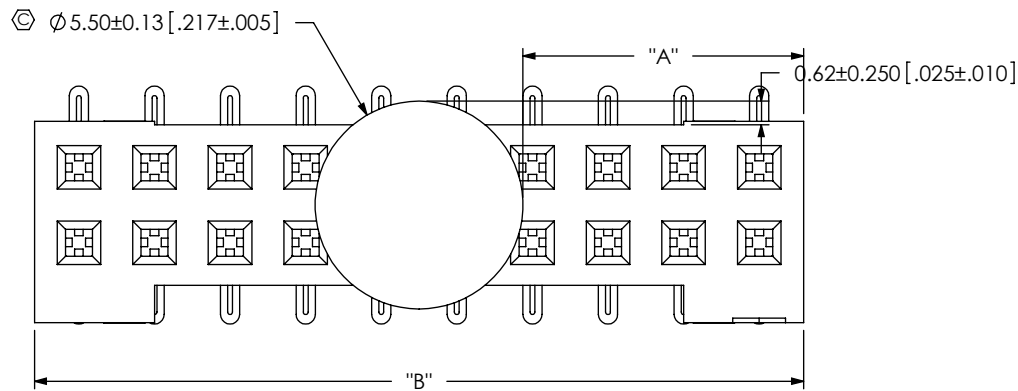
**samtec**

520 PARK EAST BLVD, NEW ALBANY, IN 47150  
PHONE: 812-944-6733 FAX: 812-948-5047  
e-Mail: info@SAMTEC.com code: 55322

DESCRIPTION:  
2mm DOUBLE ROW SOCKET STRIP

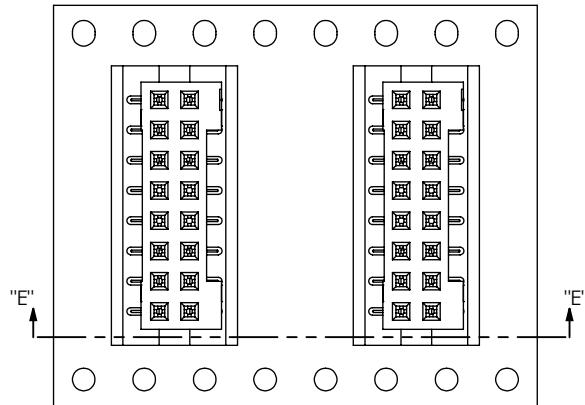
DWG. NO.  
**S2M-1XX-XX-X-D-XX-XX**

BY: T NEWTON 09-16-2010 SHEET 3 OF 4

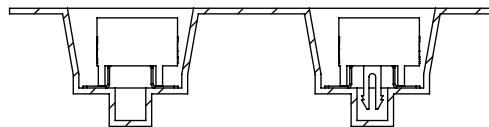


NOTE: "B" = USED MEASURED DIMENSION (REF)  
 "A" =  $\{("B" - 5.50[.217]) / 2\} \pm 0.51[.020]$

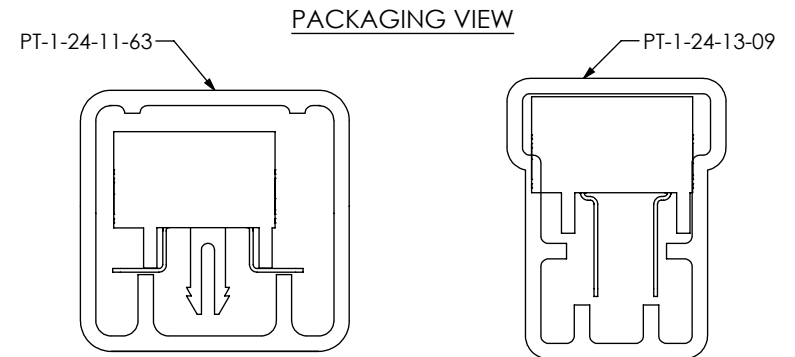
FIG 3  
 S2M-110-02-X-D-K SHOWN  
 (SAME AS FIG 2, EXCEPT AS SHOWN)



USER DIRECTION OF UN-REELING  
 POCKET NOT DETAILED



SECTION "E"-"E"  
 SCALE 2:1  
 TAPE & REEL VIEW



TUBE TABLE		
LEAD STYLE	TUBE	PLUG
-01	PT-1-24-13-09	TP-24
-02	PT-1-24-11-63	TP-24

F:\DWG\MISC\MKTG\S2M-1XX-XX-X-D-XX-XX-MKT.SLDDRW

**PROPRIETARY NOTE**  
 THIS DOCUMENT CONTAINS INFORMATION  
 CONFIDENTIAL AND PROPRIETARY TO  
 SAMTEC, INC. AND SHALL NOT BE REPRODUCED  
 OR TRANSFERRED TO OTHER DOCUMENTS OR  
 DISCLOSED TO OTHERS OR USED FOR ANY  
 PURPOSE OTHER THAN THAT WHICH IT WAS  
 OBTAINED WITHOUT THE EXPRESSED WRITTEN  
 CONSENT OF SAMTEC, INC.

DO NOT SCALE DRAWING

SHEET SCALE: 4:1

**samtec**

520 PARK EAST BLVD, NEW ALBANY, IN 47150  
 PHONE: 812-944-6733 FAX: 812-948-5047  
 e-Mail: info@SAMTEC.com code: 55322

DESCRIPTION:  
 2mm DOUBLE ROW SOCKET STRIP

DWG. NO.  
**S2M-1XX-XX-X-D-XX-XX**

BY: T NEWTON 09-16-2010 SHEET 4 OF 4