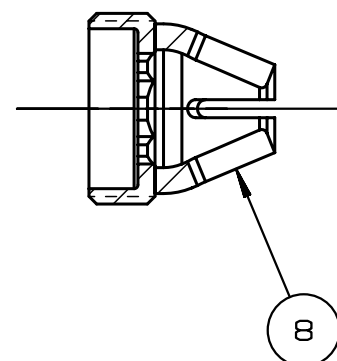


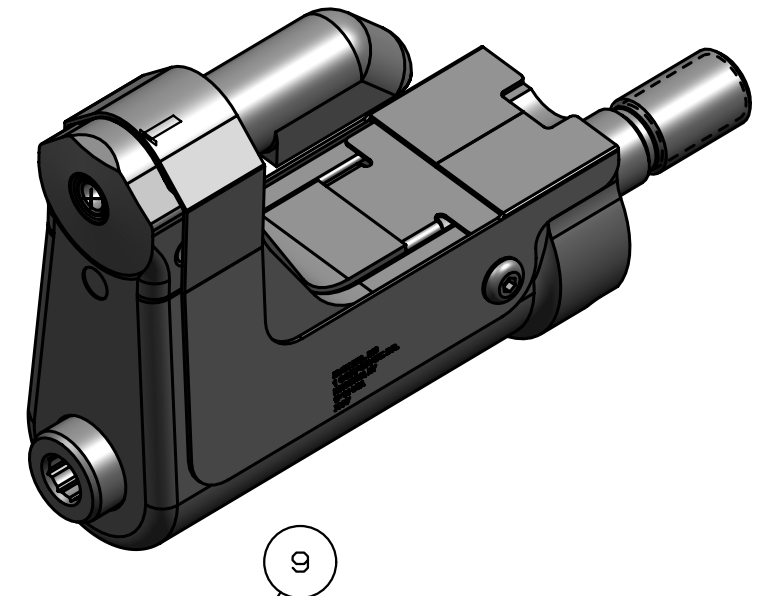
NOTES:

- 1 MAXIMUM RECOMENDED STORKE: .500
- 2 FOR USE WITH THE 255/245 TOOL, USE ATTACHMENT P/N 114900-1 AND STROKE LIMITER 118362
- 3 FOR USE WITH 2500 TOOL, USE ATTACHMENT P/N 119400-1 AND STROKE LIMITER KIT 119888
- 4 FOR OTHER TOOLS AND/OR OTHER TOOL AND STROKE COMBINATIONS, CONSULT ENGINEERING DEPARTMENT
- 5 SHIP WITH STOP 126747
- 6 SHIP WITH DEFLECTOR 126748-1
- 7 SHIP WITH (2) .030 SHIMS 128290 REFERENCE PB563 FOR PROPER USE



SECTION A - A

REV	DESCRIPTION	DET	DATE
E	ITEM 3, 130051 WAS 128076	EL	11/09/11
F	128495 WAS 128605 ADDED 128487	JJC	07/13/12
G	ADDED 508511, 130322-1 WAS 126746, 130326-1 WAS 126745; ADDED VIEW	NDG	06/03/13
H	-05LGP WAS -06LGP (TYP0)	HKS	5/23/14



508511	2	#6-32 B.H.C.S.	10
128487	1	DRAWBAR	9
126748-1	1	UNITIZED DEFLECTOR	8
128495	1	COLLET	7
130326-1	1	GUARD	6
120095	1	DEFLECTOR	5
122912	1	BARBED RETAINER	4
130051	1	UNITIZED CHUCK JAWS	3
130322-1	1	TOP GUARD	2
127034	1	ANVIL	1
PART NO.	QTY	DESCRIPTION	ITEM

IDENTIFICATION PER SPEC 42-311: ★ ETCH	HUCK INTERNATIONAL, INC., I.S.D 1 CORPORATE DR KINGSTON, NEW YORK 12401		
ITAR/ECCN: EAR99	NOSE ASSEMBLY -05 LGP		
SCH B#: 8467.99.0190	FINAL ASSY: FOR USE WITH 206-375		
HTS: 8467.99.0190	ENG: MVM CK: B	DATE: 2/21/02	SCALE: 2:1
		99-3700-1	