

Plug-in Screw Connector System for Printed Circuit Boards

115-F-111 | 5.00 mm (0.197 in) Spacing - 2-12 poles

TECHNICAL INFORMATION

Description

The 115-F-111 is part of the plug-in screw connector family with an elevator style clamping mechanism. It was developed as an alternative to 950-FL-DS connector types.

The 115-F-111...-1.1-BA is a low profile version that makes applications in flat housings possible. The footprint is designed towards making a perfect match with 971-SL pinstrips.

Plug

Low profile

Solid version

Elevator Style Clamping mechanism

NOTE: CAN BE PLUGGED WITH 1.1 mm PIN DIAMETER ONLY. The plastic housing has a black color.

Technical Data

Center to Center Spacing: 5.000 mm (0.197 in)

Nominal Cross Section: 2.1 mm² (3255 mils²)

Wire Stripping Length: 6.500 mm (0.256 in)

Bill of Materials

Molding : Polyamide, Self extinguishing UL 94, V-0

Color : Black

Temperature limits :

Short Time : 140°C (284°F)

Continuous : 105°C (221°F)

Low Limit : -40°C (-40°F)

Comparative Tracking Index : CTI ? 600 V

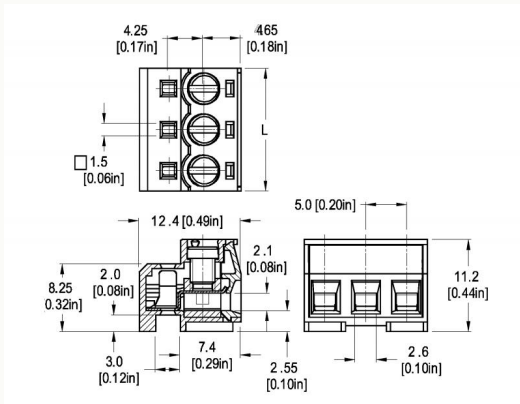
Oxygen Index Rating : 32 %

Terminal Body: Nickel plated copper alloy

Contact Spring: Tin plated copper alloy

Screw: Zinc plated blue passivated or tin plated M3

TECHNICAL DRAWING



Description :