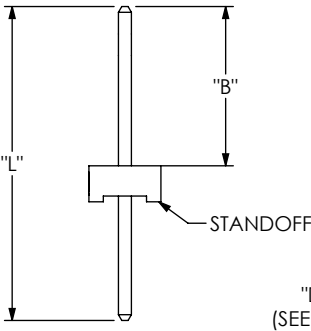
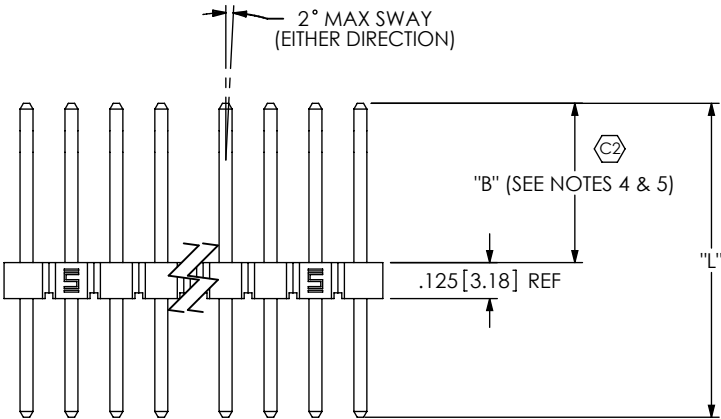
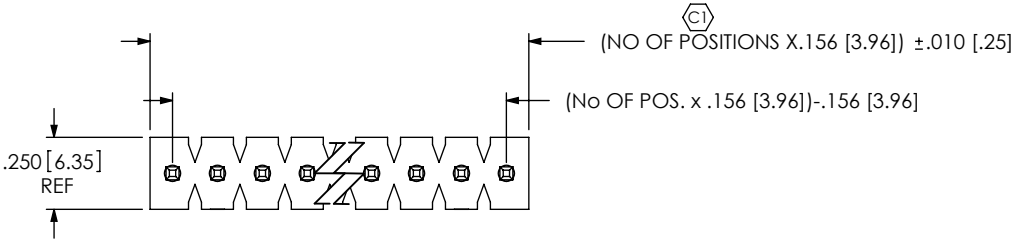


DO NOT
SCALE FROM
THIS PRINT

TABLE 1						
STYLE	TERMINAL	"B" POST	"L" LENGTH	-RA ONLY		
				"C"	"D"	"E"
-01	T-1S8-01-TX	.450 [11.43]	.750 [19.05]	N/R	N/R	
-02	T-1S8-02-TX	.500 [12.70]	.800 [20.32]	.100 [2.54]	.175 [4.45]	.320 [8.13] REF
-03	T-1S8-03-TX	.674 [17.12]	.955 [24.26]	** .195 [4.95]	** .156 [3.96]	** .320 [8.13] REF
-04	T-1S8-04-TX	.809 [20.55]	1.090 [27.69]	.195 [4.95]	.156 [3.96]	.534 [13.46] REF
-05	T-1S8-11-TX	.150 [3.81]	.750 [19.05]	N/R	N/R	N/R
-06	T-1S8-05-TX	1.050 [26.67]	1.350 [34.29]	N/R	N/R	N/R

**=NOT RELEASED FOR PRODUCTION.



-RA
IN-PROCESS VIEW

FWJ-XX-XX-TX-S-XX

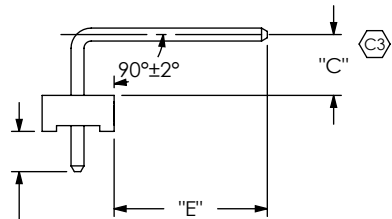
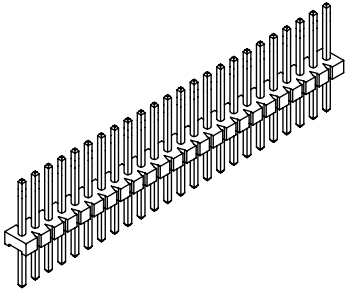
No OF POSITIONS
-01 THRU -23
-24 = SEE FSW-24-156

LEAD STYLE
SEE TABLE 1

OPTION
-RA: RIGHT ANGLE

BODY SPECIFICATION
USE FSW-24-156

PLATING SPECIFICATION
-T: MATTE TIN CONTACT AND TAIL
-TM: MATTE TIN CONTACT AND TAIL



-RA
-02 & -04 ONLY

NOTES:

1. (C1) REPRESENTS A CRITICAL DIMENSION.
2. MIN PUSHOUT FORCE: 3 LBS.
3. MAX ALLOWABLE BOW AFTER ASSEMBLY: .003 [.08] INCH/INCH
4. HEIGHT VARIATION BETWEEN PINS SHALL BE .005 [.13] MAX
5. BANDOLIER AREA TO BE POSITIONED ABOUT OR TOWARDS STANDOFF SIDE OF BODY.
ENTIRE BANDOLIER AREA MUST NOT BE LOCATED IN THIS AREA ON LEADSTYLES -01, -02, -03, AND -05.
6. MAX CUT FLASH: .020 [.51]

UNLESS OTHERWISE SPECIFIED,
DIMENSIONS ARE IN INCHES.
TOLERANCES ARE:
DECIMALS ANGLES
.XX: ±.01 [.3] 1°
.XXX: ±.005 [.13]
.XXXX: ±.0020 [.051]

PROPRIETARY NOTE
THIS DOCUMENT CONTAINS CONFIDENTIAL AND
PROPRIETARY INFORMATION AND ALL DESIGN,
MANUFACTURING, REPRODUCTION, USE, PATENT RIGHTS
AND SALES RIGHTS ARE EXPRESSLY RESERVED BY SAMTEC,
INC. THIS DOCUMENT SHALL NOT BE DISCLOSED, IN WHOLE
OR PART, TO ANY UNAUTHORIZED PERSON OR ENTITY NOR
REPRODUCED, TRANSFERRED OR INCORPORATED IN ANY
OTHER PROJECT IN ANY MANNER WITHOUT THE EXPRESS
WRITTEN CONSENT OF SAMTEC, INC.

MATERIAL:
INSULATOR: PBT, UL 94 VO
COLOR: BLACK

TERMINAL: PIN STYLES -01 THRU -05: PHOS BRONZE
PIN STYLE -11: CDA 7025

F:\DWG\MISC\MKTG\FWJ-XX-XX-TX-S-XX-MKT.SLDDRW

DO NOT SCALE DRAWING

SHEET SCALE: 1.5:1

DESCRIPTION:
.045 SQ POST ASSEMBLY

DWG. NO.
FWJ-XX-XX-TX-S-XX

BY: DEAN PURVIS 2-19-86 SHEET 1 OF 1

samtec

520 PARK EAST BLVD, NEW ALBANY, IN 47150
PHONE: 812-944-6733 FAX: 812-948-5047
e-Mail: info@SAMTEC.com code 55322