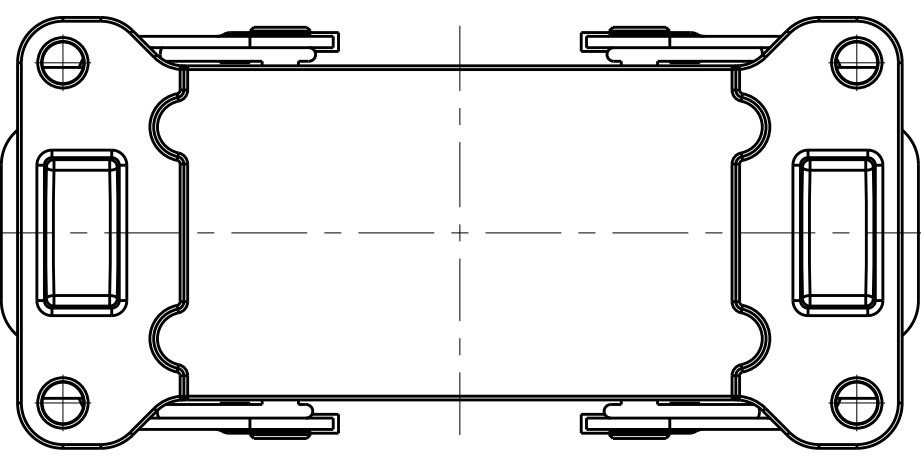
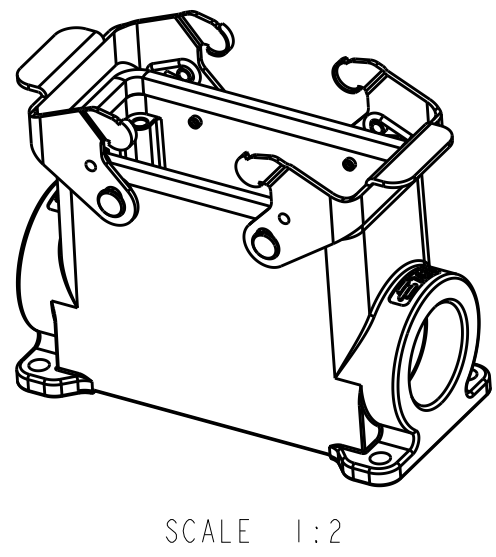
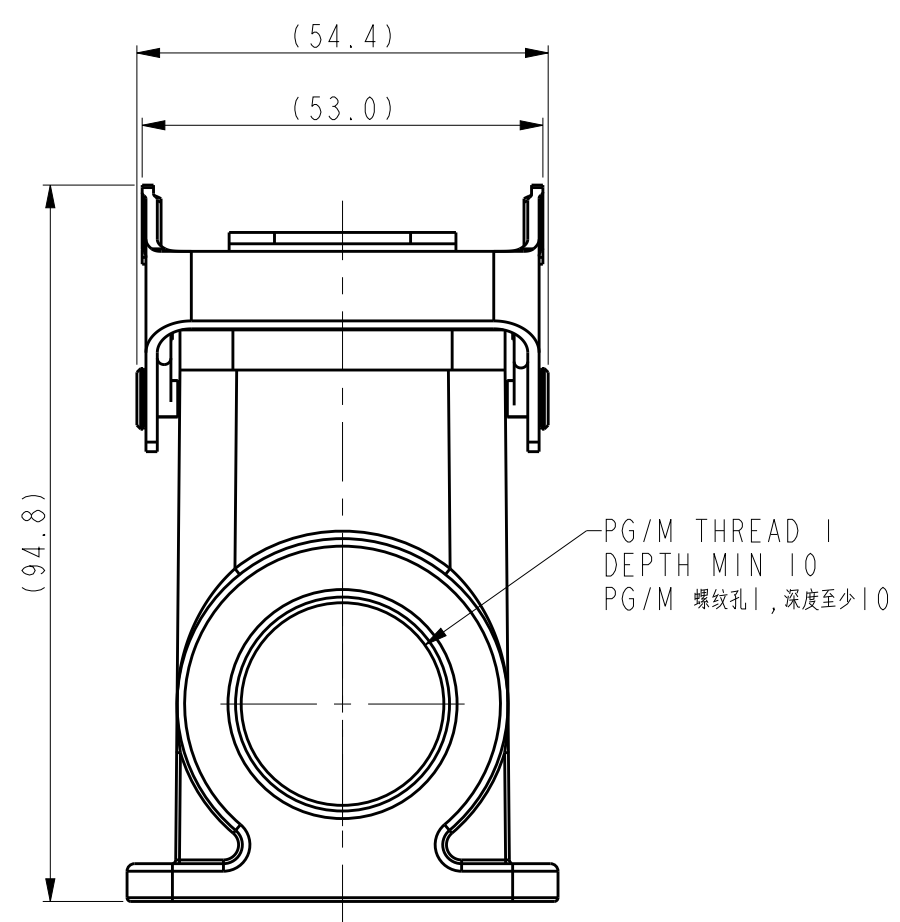
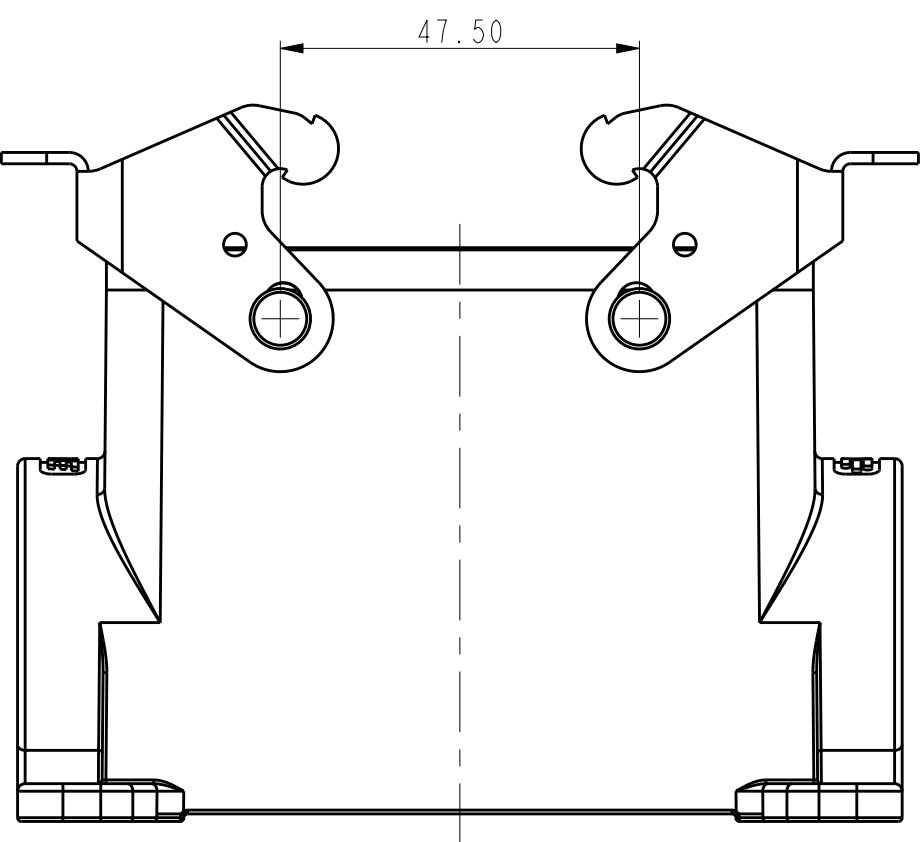
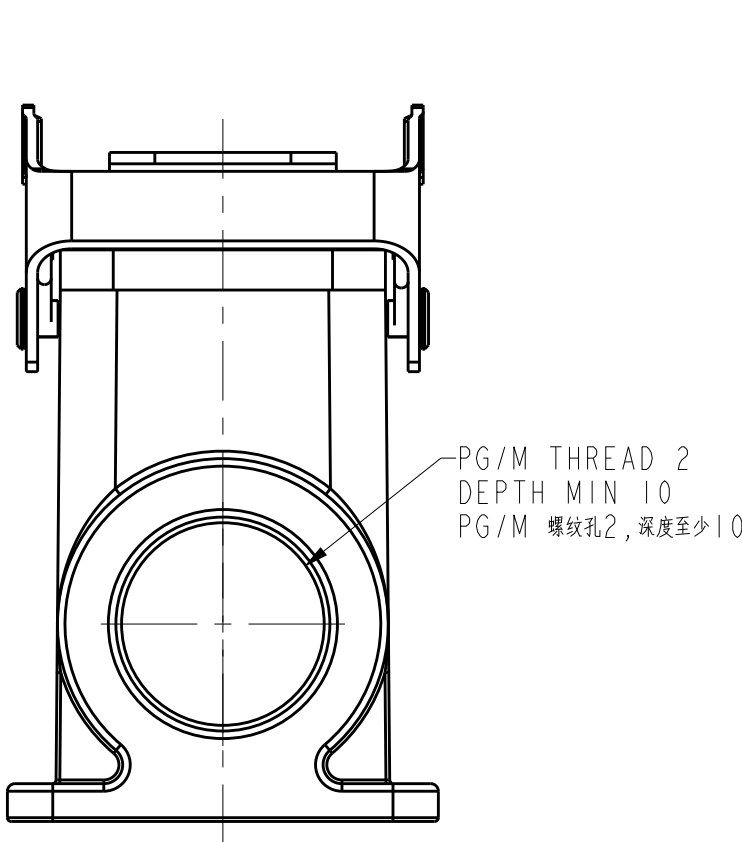
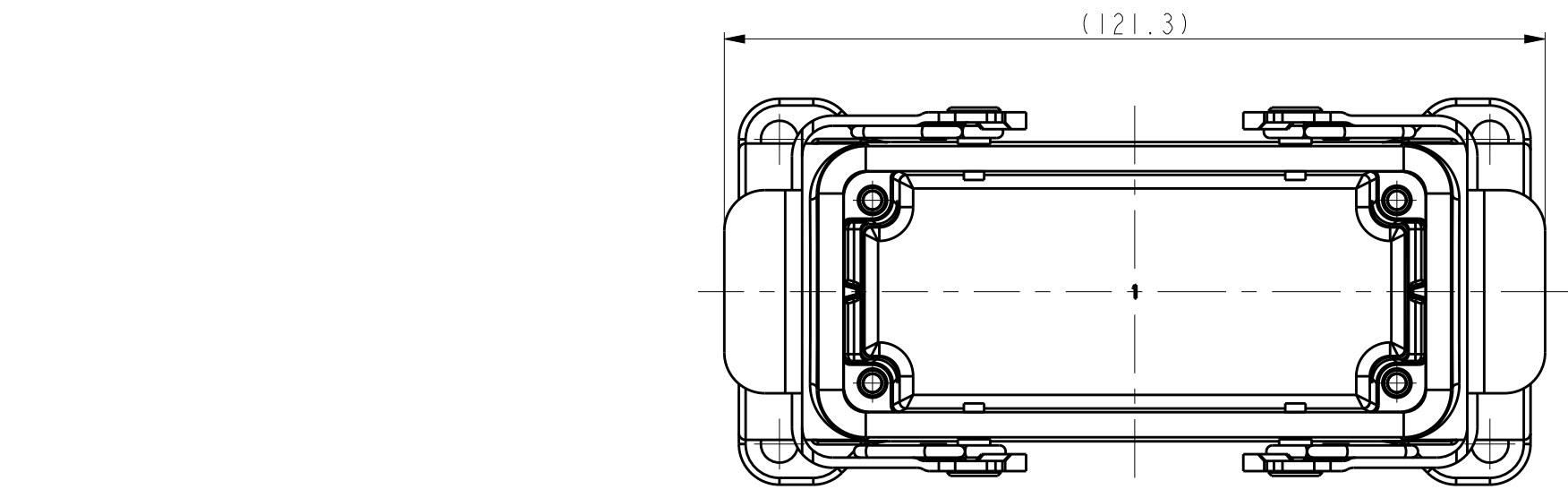


REVISIONS					
P	LTR	DESCRIPTION	DATE	DWN	APVD
	-	SEE SHEET 1	-	-	-

NOTES:
SEE SHEET 1



TYPE 3: HIGH CONSTRUCTION + METAL DOUBLE LOCKING,
SIDE ENTRY, OTHER SPEC REFER TO TYPE 1.

类型3：高结构+彩锌双扣，侧出，其它参照类型1。

THIS DRAWING IS A CONTROLLED DOCUMENT.		DWN 22JUN2015 DAVID.LI	TE Connectivity		
DIMENSIONS:		CHK 22JUN2015 CHRIS.WANG			
mm	TOLERANCES UNLESS OTHERWISE SPECIFIED:	APVD 22JUN2015 XIANG.XU	NAME HI6B-SGRHS-PG/M		
	0 PLC ±-	PRODUCT SPEC	SIZE A2		
	1 PLC ±-	108-137013	CAGE CODE -		
	2 PLC ±-	APPLICATION SPEC	DRAWING NO. ©-TI47016XXXX000		
	3 PLC ±-	114-137013	RESTRICTED TO -		
MATERIAL	4 PLC ±-	WEIGHT -	SCALE 1:2		
-	ANGLES ±-	CUSTOMER DRAWING	SHEET 2 OF 3		
-	FINISH -		REV A1		

4

3

2

1

THIS DRAWING IS UNPUBLISHED.

RELEASED FOR PUBLICATION

20

© COPYRIGHT 20

BY -

ALL RIGHTS RESERVED.

NOTES:

SEE SHEET I

REVISIONS

P	LTR	DESCRIPTION	DATE	DWN	APVD
	-	SEE SHEET I	-	-	-

TI470162232-000	HI6B-SGRH-2M32	HI6B HOUSING, SURFACE MOUNTED, METAL DOUBLE LOCKING, 2M32, HIGH CONSTRUCTION, POWDER COATED, GREY HI6B下壳, 表面安装, 彩锌双扣, 2M32, 高结构, 灰色粉末喷涂	M32	M32	TYPE 3 类型 3
TI470162229-000	HI6B-SGRH-2PG29	HI6B HOUSING, SURFACE MOUNTED, METAL DOUBLE LOCKING, 2PG29, HIGH CONSTRUCTION, POWDER COATED, GREY HI6B下壳, 表面安装, 彩锌双扣, 2PG29, 高结构, 灰色粉末喷涂	PG29	PG29	
TI470162225-000	HI6B-SGRH-2M25	HI6B HOUSING, SURFACE MOUNTED, METAL DOUBLE LOCKING, 2M25, HIGH CONSTRUCTION, POWDER COATED, GREY HI6B下壳, 表面安装, 彩锌双扣, 2M25, 高结构, 灰色粉末喷涂	M25	M25	
TI470162221-000	HI6B-SGRH-2PG21	HI6B HOUSING, SURFACE MOUNTED, METAL DOUBLE LOCKING, 2PG21, HIGH CONSTRUCTION, POWDER COATED, GREY HI6B下壳, 表面安装, 彩锌双扣, 2PG21, 高结构, 灰色粉末喷涂	PG21	PG21	
TI470162132-000	HI6B-SGRH-M32	HI6B HOUSING, SURFACE MOUNTED, METAL DOUBLE LOCKING, M32,HIGH CONSTRUCTION, POWDER COATED, GREY HI6B下壳, 表面安装, 彩锌双扣, M32, 高结构, 灰色粉末喷涂	M32	-	
TI470162129-000	HI6B-SGRH-PG29	HI6B HOUSING, SURFACE MOUNTED, METAL DOUBLE LOCKING, PG29,HIGH CONSTRUCTION, POWDER COATED, GREY HI6B下壳, 表面安装, 彩锌双扣, PG29, 高结构, 灰色粉末喷涂	PG29	-	
TI470162125-000	HI6B-SGRH-M25	HI6B HOUSING, SURFACE MOUNTED, METAL DOUBLE LOCKING, M25,HIGH CONSTRUCTION, POWDER COATED, GREY HI6B下壳, 表面安装, 彩锌双扣, M25, 高结构, 灰色粉末喷涂	M25	-	
TI470162121-000	HI6B-SGRH-PG21	HI6B HOUSING, SURFACE MOUNTED, METAL DOUBLE LOCKING, PG21,HIGH CONSTRUCTION, POWDER COATED, GREY HI6B下壳, 表面安装, 彩锌双扣, PG21, 高结构, 灰色粉末喷涂	PG21	-	TYPE 2 类型2
TI470165121-000	HI6B-SGRHS-PG21	HI6B HOUSING, SURFACE MOUNTED, STAINLESS STEEL DOUBLE LOCKING, PG21, HIGH CONSTRUCTION, MILL ON BOTTOM, POWDER COATED, GREY HI6B下壳, 表面安装, 不锈钢双扣, PG21, 高结构, 底部锐槽, 灰色粉末喷涂	PG21	-	
TI470161232-000	HI6B-SGRHS-2M32	HI6B HOUSING, SURFACE MOUNTED, STAINLESS STEEL DOUBLE LOCKING, 2M32, HIGH CONSTRUCTION, POWDER COATED, GREY HI6B下壳, 表面安装, 不锈钢双扣, 2M32, 高结构, 灰色粉末喷涂	M32	M32	TYPE 1 类型1
TI470161229-000	HI6B-SGRHS-2PG29	HI6B HOUSING, SURFACE MOUNTED, STAINLESS STEEL DOUBLE LOCKING, 2PG29, HIGH CONSTRUCTION, POWDER COATED, GREY HI6B下壳, 表面安装, 不锈钢双扣, 2PG29, 高结构, 灰色粉末喷涂	PG29	PG29	
TI470161221-000	HI6B-SGRHS-2PG21	HI6B HOUSING, SURFACE MOUNTED, STAINLESS STEEL DOUBLE LOCKING, 2PG21, HIGH CONSTRUCTION, POWDER COATED, GREY HI6B下壳, 表面安装, 不锈钢双扣, 2PG21, 高结构, 灰色粉末喷涂	PG21	PG21	
TI470161140-000	HI6B-SGRHS-M40	HI6B HOUSING, SURFACE MOUNTED, STAINLESS STEEL DOUBLE LOCKING, M40, HIGH CONSTRUCTION, POWDER COATED, GREY HI6B下壳, 表面安装, 不锈钢双扣, M40, 高结构, 灰色粉末喷涂	M40	-	
TI470161132-000	HI6B-SGRHS-M32	HI6B HOUSING, SURFACE MOUNTED, STAINLESS STEEL DOUBLE LOCKING, M32, HIGH CONSTRUCTION, POWDER COATED, GREY HI6B下壳, 表面安装, 不锈钢双扣, M32, 高结构, 灰色粉末喷涂	M32	-	
TI470161129-000	HI6B-SGRHS-PG29	HI6B HOUSING, SURFACE MOUNTED, STAINLESS STEEL DOUBLE LOCKING, PG29, HIGH CONSTRUCTION, POWDER COATED, GREY HI6B下壳, 表面安装, 不锈钢双扣, PG29, 高结构, 灰色粉末喷涂	PG29	-	
TI470161121-000	HI6B-SGRHS-PG21	HI6B HOUSING, SURFACE MOUNTED, STAINLESS STEEL DOUBLE LOCKING, PG21, HIGH CONSTRUCTION, POWDER COATED, GREY HI6B下壳, 表面安装, 不锈钢双扣, PG21, 高结构, 灰色粉末喷涂	PG21	-	
TI470160000-000	HI6B-SGRHS-T	HI6B HOUSING, SURFACE MOUNTED, STAINLESS STEEL DOUBLE LOCKING, NO ENTRY, HIGH CONSTRUCTION, POWDER COATED, GREY HI6B下壳, 表面安装, 不锈钢双扣, 不开孔, 高结构, 灰色粉末喷涂	-	-	
PART NUMBER 料号	PART DESCRIPTION 描述		PG/M THREAD 1 PG/M 螺纹孔1	PG/M THREAD 2 PG/M 螺纹孔2	TYPE 类型

THIS DRAWING IS A CONTROLLED DOCUMENT.

DIMENSIONS:

mm

TOLERANCES UNLESS OTHERWISE SPECIFIED:

0 PLC ±-

1 PLC ±-

2 PLC ±-

3 PLC ±-

4 PLC ±-

ANGLES ±-

FINISH -

-

DWN DAVID.LI 22JUN2015

CHK CHRIS.WANG 22JUN2015

APVD XIANG.XU 22JUN2015

PRODUCT SPEC 108-137013

APPLICATION SPEC 114-137013

WEIGHT -

CUSTOMER DRAWING

TE Connectivity

NAME HI6B-SGRHS-PG/M

SIZE A2

CAGE CODE -

DRAWING NO. ©TI47016XXXX000

RESTRICTED TO -

SCALE 1:1 SHEET 3 OF 3 REV A1

1471-9 (3/13)