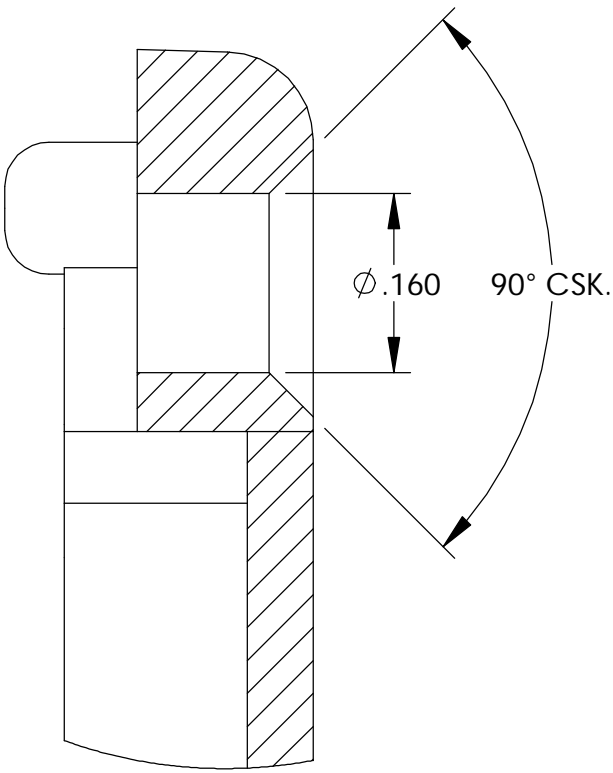
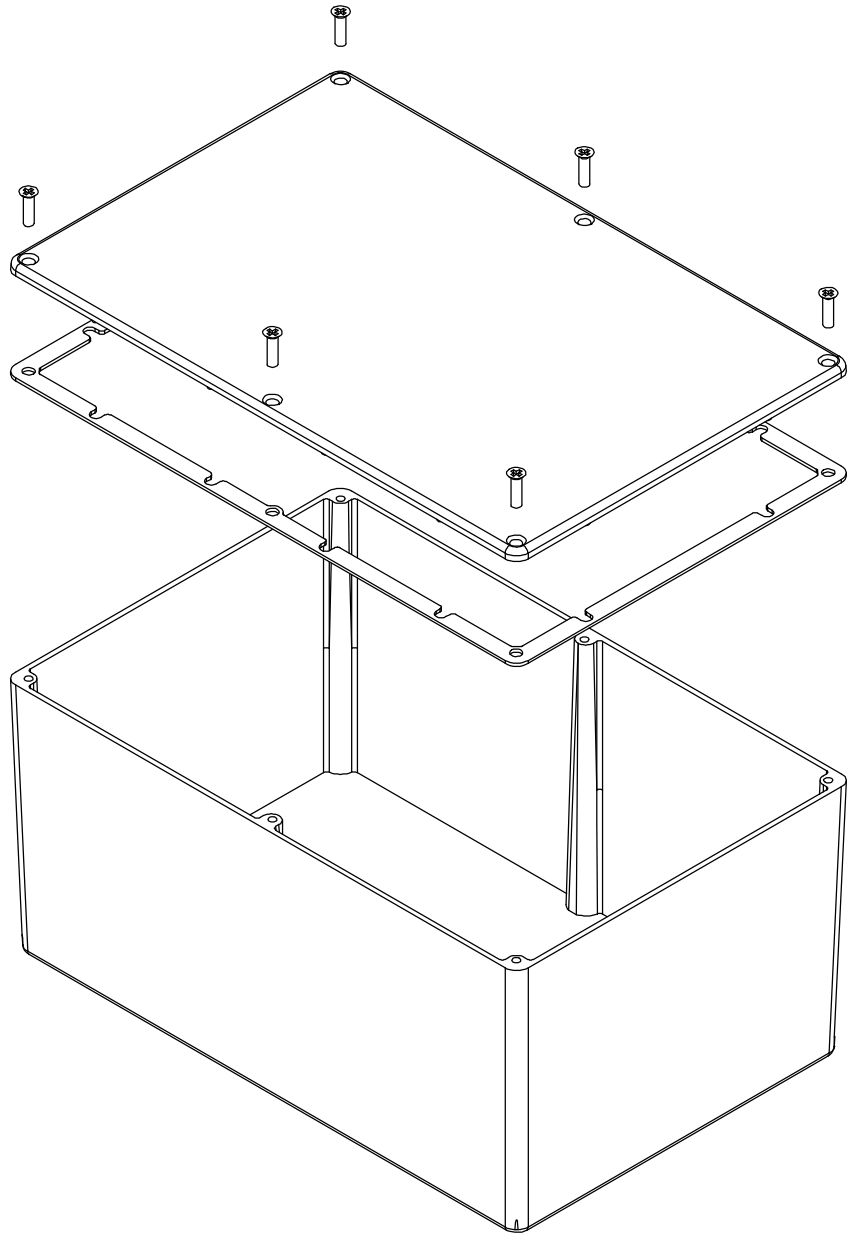


THE INFORMATION CONTAINED IN THIS DRAWING IS THE SOLE PROPERTY OF
BUD INDUSTRIES INC. ANY REPRODUCTION IN PART OR WHOLE WITHOUT
THE WRITTEN PERMISSION OF BUD INDUSTRIES INC. IS PROHIBITED.

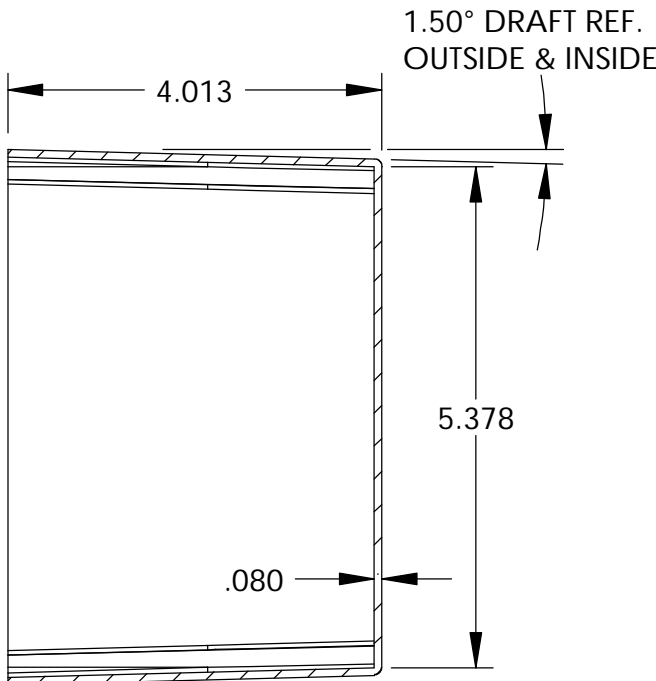
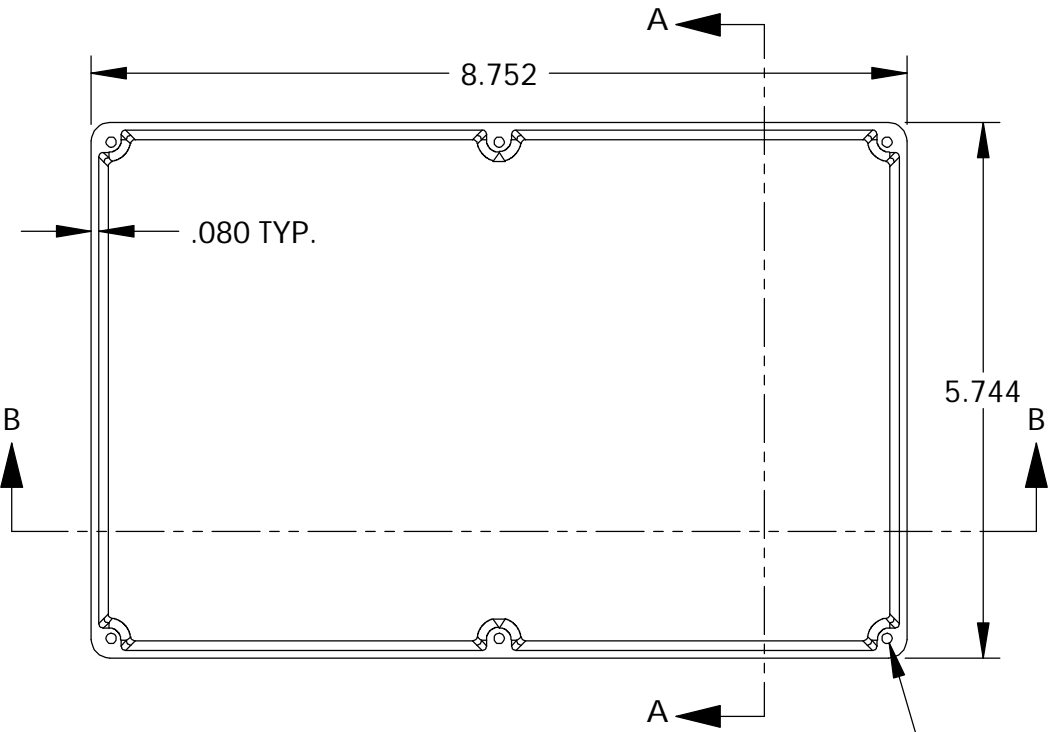
DWG. NO.	CN-5712
ISSUE	REVISIONS

MATERIAL - ALUMINUM ALLOY #ADC-12
FINISH - NATURAL (CONTACT BUD FACTORY FOR
ALTERNATE FINISHES)
GASKET - RATED IP65 NEOPRENE, SELF-ADHESIVE,
3mm THICK, COLOR BLACK
SCREWS - STAINLESS STEEL, M3.5 x 12mm LG.,
CSK. HEAD, SELF-THREADING

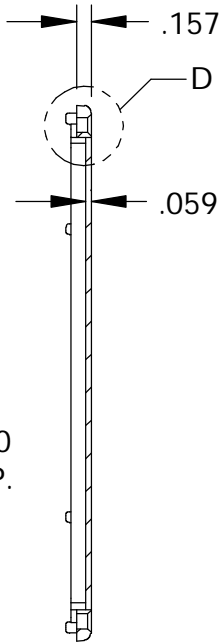
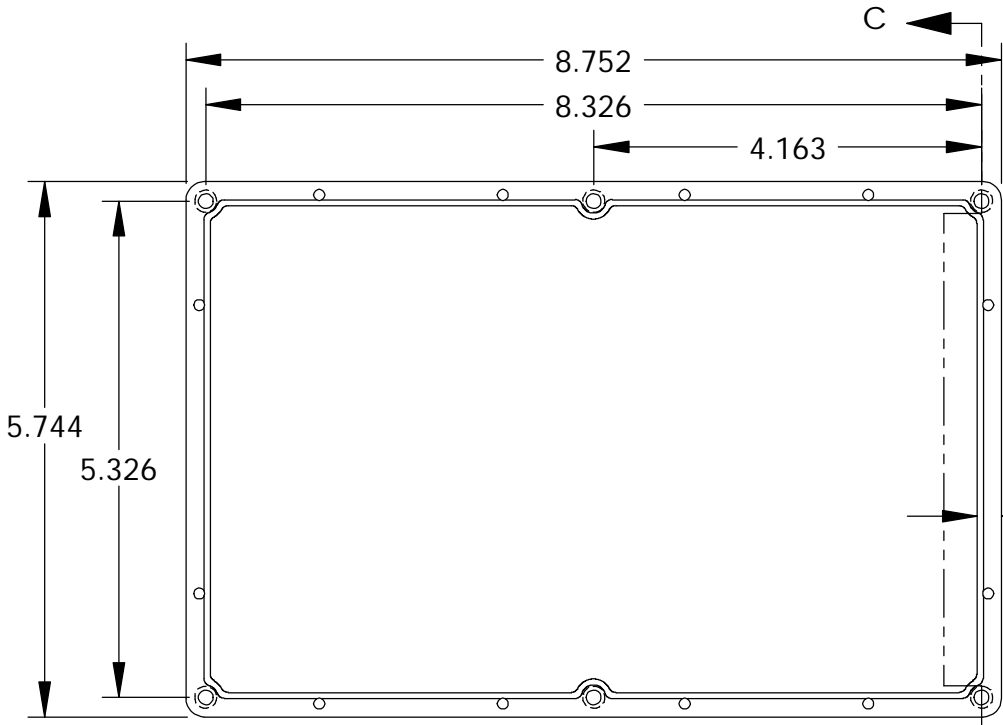
ALL HOLE DIAMETERS HAVE $\pm .005$ TOLERANCE.
ALL OTHER DIMENSIONS HAVE $\pm .015$ TOLERANCE.
ENCLOSURES ARE SHIPPED UNASSEMBLED WITH
ALL ITEMS SHOWN.



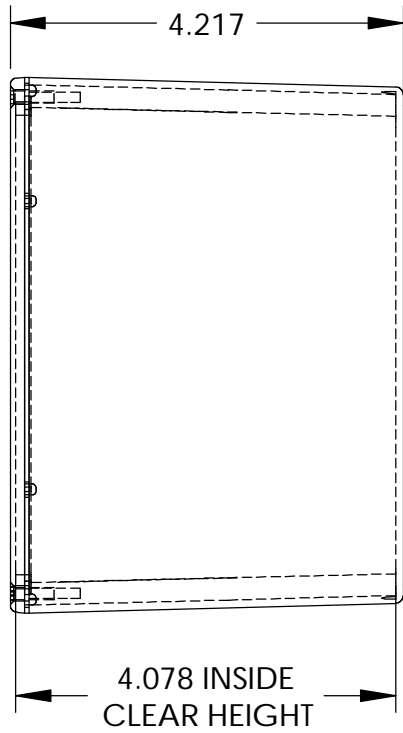
DETAIL D
SCALE 6 : 1



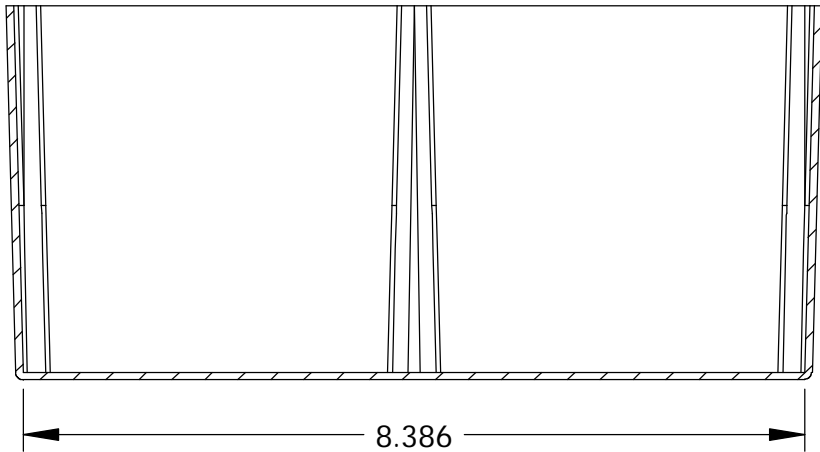
SECTION A-A



.260
TYP.



SECTION C-C



SECTION B-B

BODY

COVER

PARTS LIST					
+/- .005 BETWEEN HOLE CENTERS +/- .015 FROM SHEARED EDGE +/- .032 FROM A BENT SURFACE +/- .062 BETWEEN ASSEMBLED SURFACES UNLESS OTHERWISE SPECIFIED	CAD GENERATED DRAWING. DO NOT MANUALLY UPDATE		BUD INDUSTRIES INC.		
	APPROVALS	DATE	DIE CAST ALUMINUM ENCLOSURE		
	DRAWN DAB	3-31-06			
	CHECKED				
AS NOTED	APPROVED				
AS NOTED					
DO NOT SCALE DRAWING					
QTY.	USED ON		SCALE	DWG. NO. CN-5712	REV.
			CAD FILE:		SHEET 1 OF 1

Mouser Electronics

Authorized Distributor

Click to View Pricing, Inventory, Delivery & Lifecycle Information:

[Bud Industries:](#)

[CN-5712](#)