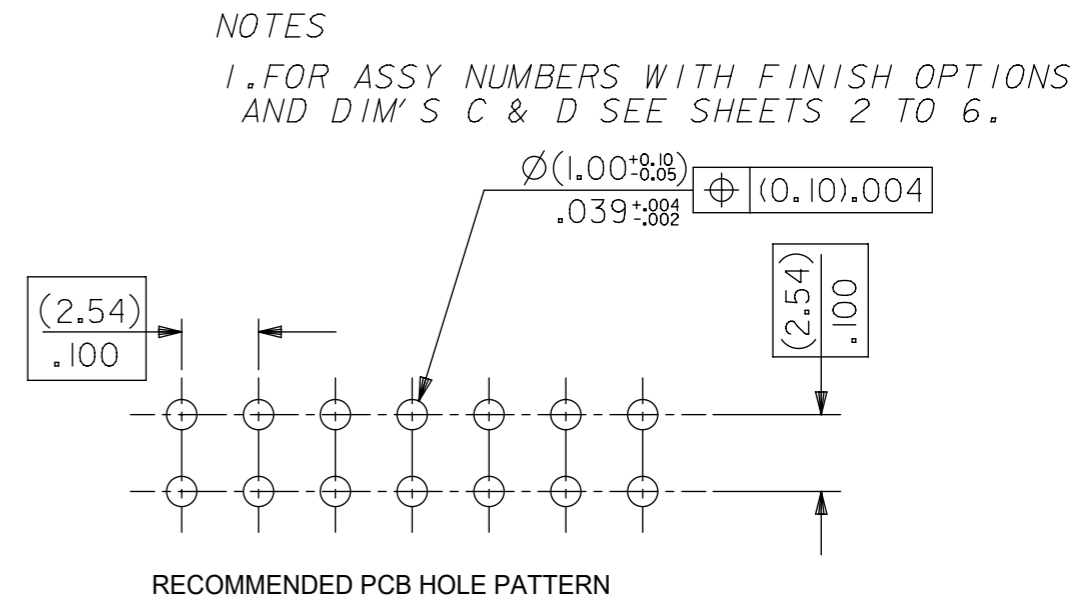
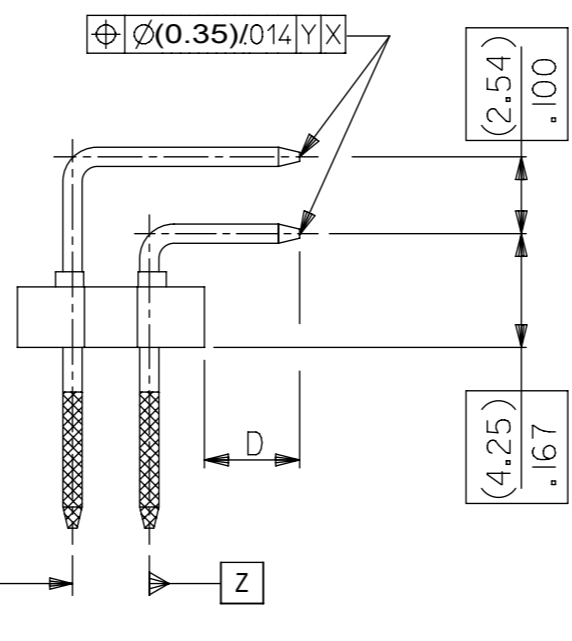
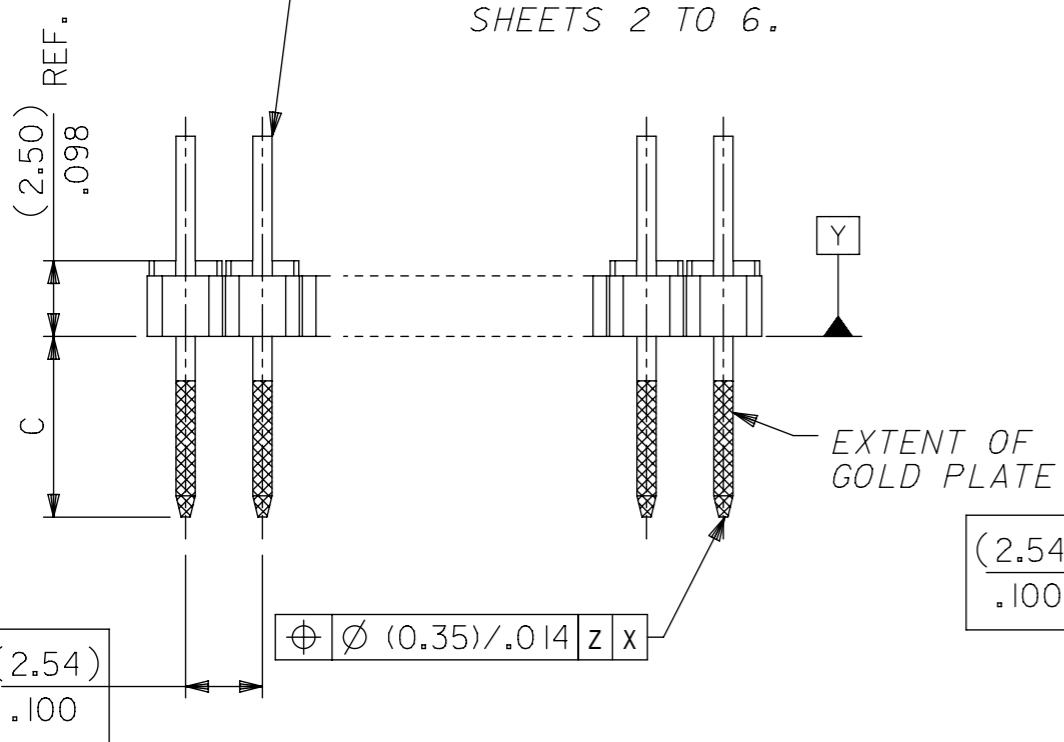


WAFER: 15% GLASS FILLED POLYESTER TO UL 94V-0. COLOUR: BLACK.

PINS: (0.650)/.0255 SQ. BRASS WIRE. PLATED AS PER SHEETS 2 TO 6.



CKT SIZE	DIM. "A"		DIM. "B" ^(+0.20/-0.35) _{+0.008/-0.014}		CKT SIZE	DIM. "A"		DIM. "B" ^(±0.20) _{±.008}	
2X 1	—		(2.54)	.100	2X21	(50.80)	2.000	(53.34)	2.100
2X 2	(2.54)	.100	(5.08)	.200	2X22	(53.34)	2.100	(55.88)	2.200
2X 3	(5.08)	.200	(7.62)	.300	2X23	(55.88)	2.200	(58.42)	2.300
2X 4	(7.62)	.300	(10.16)	.400	2X24	(58.42)	2.300	(60.96)	2.400
2X 5	(10.16)	.400	(12.70)	.500	2X25	(60.96)	2.400	(63.50)	2.500
2X 6	(12.70)	.500	(15.24)	.600	2X26	(63.50)	2.500	(66.04)	2.600
2X 7	(15.24)	.600	(17.78)	.700	2X27	(66.04)	2.600	(68.58)	2.700
2X 8	(17.78)	.700	(20.32)	.800	2X28	(68.58)	2.700	(71.12)	2.800
2X 9	(20.32)	.800	(22.86)	.900	2X29	(71.12)	2.800	(73.66)	2.900
2X10	(22.86)	.900	(25.40)	1.000	2X30	(73.66)	2.900	(76.20)	3.000
2X11	(25.40)	1.000	(27.94)	1.100	2X31	(76.20)	3.000	(78.74)	3.100
2X12	(27.94)	1.100	(30.48)	1.200	2X32	(78.74)	3.100	(81.28)	3.200
2X13	(30.48)	1.200	(33.02)	1.300	2X33	(81.28)	3.200	(83.82)	3.300
2X14	(33.02)	1.300	(35.56)	1.400	2X34	(83.82)	3.300	(86.36)	3.400
2X15	(35.56)	1.400	(38.10)	1.500	2X35	(86.36)	3.400	(88.90)	3.500
2X16	(38.10)	1.500	(40.64)	1.600	2X36	(88.90)	3.500	(91.44)	3.600
2X17	(40.64)	1.600	(43.18)	1.700	2X37	(91.44)	3.600	(93.98)	3.700
2X18	(43.18)	1.700	(45.72)	1.800	2X38	(93.98)	3.700	(96.52)	3.800
2X19	(45.72)	1.800	(48.26)	1.900	2X39	(96.52)	3.800	(99.06)	3.900
2X20	(48.26)	1.900	(50.80)	2.000	2X40	(99.06)	3.900	(101.60)	4.000

NOTES

1. FOR ASSY NUMBERS WITH FINISH OPTIONS AND DIM'S C & D SEE SHEETS 2 TO 6.

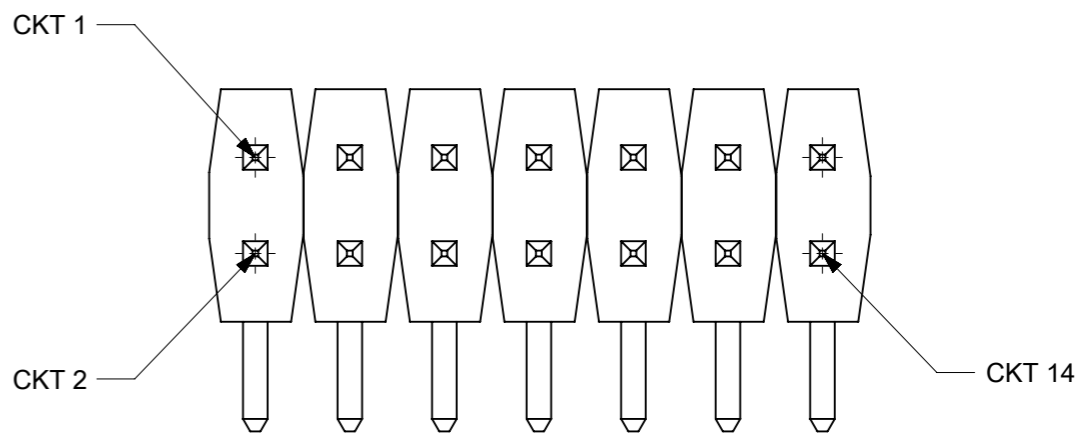
- NOTES
 2. RECOMMENDED PCB THICKNESS: 1.6MM
 3. PRODUCT SPECIFICATION: PS-99020-0001

THIS DRAWING CONTAINS INFORMATION THAT IS PROPRIETARY TO MOLEX ELECTRONIC TECHNOLOGIES, LLC AND SHOULD NOT BE USED WITHOUT WRITTEN PERMISSION									
DIMENSION UNITS		SCALE		CURRENT REV DESC:				molex	
mm		NTS							
GENERAL TOLERANCES (UNLESS SPECIFIED)				EC NO: 804652				C-GRID III	
		MM	INCH	DRWN: SUAIFR		2024/11/19		DUAL ROW RIGHT ANGLE HEADER	
4 PLACES		±	±	CHK'D: SUAIFR		2024/11/19		PRODUCT CUSTOMER DRAWING	
3 PLACES		±	±	APPR: ISHWARG		2024/11/19		DOCUMENT NUMBER	
2 PLACES		± 0.05	± 0.002	INITIAL REVISION:		16/07/87		SDA-90122	
1 PLACE		±	±	DRWN: DB		1987/07/16		DOC TYPE	
0 PLACES		±	±	APPR: DB				PSD	
ANGULAR TOL		±	°	SERIES		90122		DOC PART	
DRAFT WHERE APPLICABLE MUST REMAIN WITHIN DIMENSIONS		THIRD ANGLE PROJECTION		DRAWING		MATERIAL NUMBER		REVISION	
		A3-SIZE		GENERAL MARKET		SEE TABLE		M4	
				SHEET NUMBER		1 OF 6			

CIRCUIT SIZE	PLATING TYPE A PART NO.	PLATING TYPE E PART NO.	PLATING TYPE F PART NO.
2 X 1	90122-0121	90122-0761	90122-0921
2 X 2	▲ -0122	▲ -0762	▲ -0922
2 X 3	-0123	-0763	-0923
2 X 4	-0124	-0764	-0924
2 X 5	-0125	-0765	-0925
2 X 6	-0126	-0766	-0926
2 X 7	-0127	-0767	-0927
2 X 8	-0128	-0768	-0928
2 X 9	-0129	-0769	-0929
2 X 10	-0130	-0770	-0930
2 X 11	-0131	-0771	-0931
2 X 12	-0132	-0772	-0932
2 X 13	-0133	-0773	-0933
2 X 14	-0134	-0774	-0934
2 X 15	-0135	-0775	-0935
2 X 16	-0136	-0776	-0936
2 X 17	-0137	-0777	-0937
2 X 18	-0138	-0778	-0938
2 X 19	-0139	-0779	-0939
2 X 20	-0140	-0780	-0940
2 X 21	-0141	-0781	-0941
2 X 22	-0142	-0782	-0942
2 X 23	-0143	-0783	-0943
2 X 24	-0144	-0784	-0944
2 X 25	-0145	-0785	-0945
2 X 26	-0146	-0786	-0946
2 X 27	-0147	-0787	-0947
2 X 28	-0148	-0788	-0948
2 X 29	-0149	-0789	-0949
2 X 30	-0150	-0790	-0950
2 X 31	-0151	-0791	-0951
2 X 32	-0152	-0792	-0952
2 X 33	-0153	-0793	-0953
2 X 34	-0154	-0794	-0954
2 X 35	-0155	-0795	-0955
2 X 36	-0156	-0796	-0956
2 X 37	-0157	-0797	-0957
2 X 38	-0158	-0798	-0958
2 X 39	▼ -0159	▼ -0799	▼ -0959
2 X 40	90122-0160	90122-0800	90122-0960

DIM C (± 0.20) ± .008 (6.75) .266

DIM D (± 0.25) ± .010 (2.90) .114



CKT IDENTIFICATION (THE ABOVE 14 CKT IS FOR ILLUSTRATION PURPOSE ONLY) M4

NOTES:
FOR PLATING VARIATIONS SEE
ENG.STD. SDES-99000-0003.

THIS DRAWING CONTAINS INFORMATION THAT IS PROPRIETARY TO MOLEX ELECTRONIC TECHNOLOGIES, LLC AND SHOULD NOT BE USED WITHOUT WRITTEN PERMISSION											
DIMENSION UNITS		SCALE		CURRENT REV DESC:						molex	
mm		NTS		EC NO: 804652							
GENERAL TOLERANCES (UNLESS SPECIFIED)				DRWN: SUAIFR		2024/11/19		C-GRID III			
		MM		CHK'D: SUAIFR		2024/11/19		DUAL ROW RIGHT ANGLE HEADER			
4 PLACES ±		±		APPR: ISHWARG		2024/11/19		PRODUCT CUSTOMER DRAWING			
3 PLACES ±		±		INITIAL REVISION:				DOCUMENT NUMBER		DOC TYPE DOC PART REVISION	
2 PLACES ±		0.05 ± 0.002		DRWN: DB		16/07/87		SDA-90122		PSD 001 M4	
1 PLACE ±		±		APPR: DB		1987/07/16		MATERIAL NUMBER		CUSTOMER	
0 PLACES ±		±		THIRD ANGLE PROJECTION		DRAWING		SERIES		SHEET NUMBER	
ANGULAR TOL ± °		± °		DRAFT WHERE APPLICABLE MUST REMAIN WITHIN DIMENSIONS		A3-SIZE		90122		SEE TABLE GENERAL MARKET 2 OF 6	

10		9		8		7		6		5		4		3		2		1		
		CIRCUIT SIZE	PLATING TYPE A PART NO.		PLATING TYPE E PART NO.		PLATING TYPE F PART NO.				CIRCUIT SIZE		PLATING TYPE A PART NO.		PLATING TYPE E PART NO.		PLATING TYPE F PART NO.			
		2 X 1	90122-0041		90122-0681		90122-0841				2 X 1		90122-0081		90122-0721		90122-0881			
		2 X 2	▲ -0042		▲ -0682		▲ -0842				2 X 2		▲ -0082		▲ -0722		▲ -0882			
		2 X 3	-0043		-0683		-0843				2 X 3		-0083		-0723		-0883			
		2 X 4	-0044		-0684		-0844				2 X 4		-0084		-0724		-0884			
		2 X 5	-0045		-0685		-0845				2 X 5		-0085		-0725		-0885			
		2 X 6	-0046		-0686		-0846				2 X 6		-0086		-0726		-0886			
		2 X 7	-0047		-0687		-0847				2 X 7		-0087		-0727		-0887			
		2 X 8	-0048		-0688		-0848				2 X 8		-0088		-0728		-0888			
		2 X 9	-0049		-0689		-0849				2 X 9		-0089		-0729		-0889			
		2 X 10	-0050		-0690		-0850				2 X 10		-0090		-0730		-0890			
		2 X 11	-0051		-0691		-0851				2 X 11		-0091		-0731		-0891			
		2 X 12	-0052		-0692		-0852				2 X 12		-0092		-0732		-0892			
		2 X 13	-0053		-0693		-0853				2 X 13		-0093		-0733		-0893			
		2 X 14	-0054		-0694		-0854				2 X 14		-0094		-0734		-0894			
		2 X 15	-0055		-0695		-0855				2 X 15		-0095		-0735		-0895			
		2 X 16	-0056		-0696		-0856				2 X 16		-0096		-0736		-0896			
		2 X 17	-0057		-0697		-0857				2 X 17		-0097		-0737		-0897			
		2 X 18	-0058		-0698		-0858				2 X 18		-0098		-0738		-0898			
		2 X 19	-0059		-0699		-0859				2 X 19		-0099		-0739		-0899			
		2 X 20	-0060		-0700		-0860				2 X 20		-0100		-0740		-0900			
		2 X 21	-0061		-0701		-0861				2 X 21		-0101		-0741		-0901			
		2 X 22	-0062		-0702		-0862				2 X 22		-0102		-0742		-0902			
		2 X 23	-0063		-0703		-0863				2 X 23		-0103		-0743		-0903			
		2 X 24	-0064		-0704		-0864				2 X 24		-0104		-0744		-0904			
		2 X 25	-0065		-0705		-0865				2 X 25		-0105		-0745		-0905			
		2 X 26	-0066		-0706		-0866				2 X 26		-0106		-0746		-0906			
		2 X 27	-0067		-0707		-0867				2 X 27		-0107		-0747		-0907			
		2 X 28	-0068		-0708		-0868				2 X 28		-0108		-0748		-0908			
		2 X 29	-0069		-0709		-0869				2 X 29		-0109		-0749		-0909			
		2 X 30	-0070		-0710		-0870				2 X 30		-0110		-0750		-0910			
		2 X 31	-0071		-0711		-0871				2 X 31		-0111		-0751		-0911			
		2 X 32	-0072		-0712		-0872				2 X 32		-0112		-0752		-0912			
		2 X 33	-0073		-0713		-0873				2 X 33		-0113		-0753		-0913			
		2 X 34	-0074		-0714		-0874				2 X 34		-0114		-0754		-0914			
		2 X 35	-0075		-0715		-0875				2 X 35		-0115		-0755		-0915			
		2 X 36	-0076		-0716		-0876				2 X 36		-0116		-0756		-0916			
		2 X 37	-0077		-0717		-0877				2 X 37		-0117		-0757		-0917			
		2 X 38	-0078		-0718		-0878				2 X 38		-0118		-0758		-0918			
		2 X 39	▼ -0079		▼ -0719		▼ -0879				2 X 39		▼ -0119		▼ -0759		▼ -0919			
		2 X 40	90122-0080		90122-0720		90122-0880				2 X 40		90122-0120		90122-0760		90122-0920			

DIM C (±0.20) ±.008 (5.75) .226

DIM D (±0.25) ±.010 (2.90) .114

DIM C (±0.20) ±.008 (5.75) .226

DIM D (±0.25) ±.010 (4.50) .177

NOTES:
FOR PLATING VARIATIONS SEE
ENG.STD. SDES-99000-0003.

THIS DRAWING CONTAINS INFORMATION THAT IS PROPRIETARY TO MOLEX ELECTRONIC TECHNOLOGIES, LLC AND SHOULD NOT BE USED WITHOUT WRITTEN PERMISSION											
DIMENSION UNITS		SCALE		CURRENT REV DESC:						molex	
mm		NTS									
GENERAL TOLERANCES (UNLESS SPECIFIED)				EC NO: 804652		DRWN: SUAIFR		2024/11/19		C-GRID III DUAL ROW RIGHT ANGLE HEADER	
				CHK'D: SUAIFR		2024/11/19					
				APPR: ISHWARG		2024/11/19		PRODUCT CUSTOMER DRAWING		DOCUMENT NUMBER SDA-90122	
				INITIAL REVISION:		16/07/87		DOC TYPE			
				DRWN: DB		1987/07/16		REVISION		M4	
				APPR: DB				MATERIAL NUMBER		CUSTOMER	
DRAFT WHERE APPLICABLE MUST REMAIN WITHIN DIMENSIONS				THIRD ANGLE PROJECTION		DRAWING		SERIES		SHEET NUMBER	
						A3-SIZE		90122		SEE TABLE	
						GENERAL MARKET		3 OF 6			

10	9	8	7	6	5	4	3	2	1
	CIRCUIT SIZE	PLATING TYPE A PART NO.	PLATING TYPE E PART NO.	PLATING TYPE F PART NO.					
	2 X 1	90122-0161	90122-0801	90122-0961					
	2 X 2	▲ -0162	▲ -0802	▲ -0962					
	2 X 3	-0163	-0803	-0963					
	2 X 4	-0164	-0804	-0964					
	2 X 5	-0165	-0805	-0965					
	2 X 6	-0166	-0806	-0966					
	2 X 7	-0167	-0807	-0967					
	2 X 8	-0168	-0808	-0968					
	2 X 9	-0169	-0809	-0969					
	2 X 10	-0170	-0810	-0970					
	2 X 11	-0171	-0811	-0971					
	2 X 12	-0172	-0812	-0972					
	2 X 13	-0173	-0813	-0973					
	2 X 14	-0174	-0814	-0974					
	2 X 15	-0175	-0815	-0975					
	2 X 16	-0176	-0816	-0976					
	2 X 17	-0177	-0817	-0977					
	2 X 18	-0178	-0818	-0978					
	2 X 19	-0179	-0819	-0979					
	2 X 20	-0180	-0820	-0980					
	2 X 21	-0181	-0821	-0981					
	2 X 22	-0182	-0822	-0982					
	2 X 23	-0183	-0823	-0983					
	2 X 24	-0184	-0824	-0984					
	2 X 25	-0185	-0825	-0985					
	2 X 26	-0186	-0826	-0986					
	2 X 27	-0187	-0827	-0987					
	2 X 28	-0188	-0828	-0988					
	2 X 29	-0189	-0829	-0989					
	2 X 30	-0190	-0830	-0990					
	2 X 31	-0191	-0831	-0991					
	2 X 32	-0192	-0832	-0992					
	2 X 33	-0193	-0833	-0993					
	2 X 34	-0194	-0834	-0994					
	2 X 35	-0195	-0835	-0995					
	2 X 36	-0196	-0836	-0996					
	2 X 37	-0197	-0837	-0997					
	2 X 38	-0198	-0838	-0998					
	2 X 39	▼ -0199	▼ -0839	▼ -0999					
	2 X 40	90122-0200	90122-0840	90122-1000					

DIM C (±0.20) ±.008 (6.75) .266

DIM D (±0.25) ±.010 (4.50) .177

NOTES:
FOR PLATING VARIATIONS SEE
ENG.STD. SDES-99000-0003.

THIS DRAWING CONTAINS INFORMATION THAT IS PROPRIETARY TO MOLEX ELECTRONIC TECHNOLOGIES, LLC AND SHOULD NOT BE USED WITHOUT WRITTEN PERMISSION									
DIMENSION UNITS		SCALE		CURRENT REV DESC:				molex	
mm		NTS							
GENERAL TOLERANCES (UNLESS SPECIFIED)				EC NO: 804652				C-GRID III DUAL ROW RIGHT ANGLE HEADER	
				DRWN: SUAIFR 2024/11/19					
4 PLACES ±		±		CHK'D: SUAIFR 2024/11/19				PRODUCT CUSTOMER DRAWING	
3 PLACES ±		±		APPR: ISHWARG 2024/11/19					
2 PLACES ±		0.05 ± 0.002		INITIAL REVISION:				DOCUMENT NUMBER SDA-90122	
1 PLACE ±		±		DRWN: DB 16/07/87					
0 PLACES ±		±		APPR: DB 1987/07/16				DOC TYPE PSD	
ANGULAR TOL ± °		± °		SERIES 90122				DOC PART 001	
DRAFT WHERE APPLICABLE MUST REMAIN WITHIN DIMENSIONS		THIRD ANGLE PROJECTION 		DRAWING A3-SIZE		MATERIAL NUMBER SEE TABLE		CUSTOMER GENERAL MARKET	
				SHEET NUMBER 4 OF 6		REVISION M4			

DOCUMENT STATUS	P1	RELEASE DATE	2024/11/19	09:24:49
-----------------	----	--------------	------------	----------

10	9	8	7	6	5	4	3	2	1	
	CIRCUIT SIZE	PLATING TYPE B PART NO.	PLATING TYPE C PART NO.	PLATING TYPE D PART NO.	PLATING TYPE G PART NO.	CIRCUIT SIZE	PLATING TYPE B PART NO.	PLATING TYPE C PART NO.	PLATING TYPE D PART NO.	PLATING TYPE G PART NO.
	2 X 1	90122-0281	90122-0441	90122-0601	90122-1081	2 X 1	90122-0201	90122-0361	90122-0521	90122-1001
	2 X 2	▲ -0282	▲ -0442	▲ -0602	▲ -1082	2 X 2	▲ -0202	▲ -0362	▲ -0522	▲ -1002
	2 X 3	-0283	-0443	-0603	-1083	2 X 3	-0203	-0363	-0523	-1003
	2 X 4	-0284	-0444	-0604	-1084	2 X 4	-0204	-0364	-0524	-1004
	2 X 5	-0285	-0445	-0605	-1085	2 X 5	-0205	-0365	-0525	-1005
	2 X 6	-0286	-0446	-0606	-1086	2 X 6	-0206	-0366	-0526	-1006
	2 X 7	-0287	-0447	-0607	-1087	2 X 7	-0207	-0367	-0527	-1007
	2 X 8	-0288	-0448	-0608	-1088	2 X 8	-0208	-0368	-0528	-1008
	2 X 9	-0289	-0449	-0609	-1089	2 X 9	-0209	-0369	-0529	-1009
	2 X 10	-0290	-0450	-0610	-1090	2 X 10	-0210	-0370	-0530	-1010
	2 X 11	-0291	-0451	-0611	-1091	2 X 11	-0211	-0371	-0531	-1011
	2 X 12	-0292	-0452	-0612	-1092	2 X 12	-0212	-0372	-0532	-1012
	2 X 13	-0293	-0453	-0613	-1093	2 X 13	-0213	-0373	-0533	-1013
	2 X 14	-0294	-0454	-0614	-1094	2 X 14	-0214	-0374	-0534	-1014
	2 X 15	-0295	-0455	-0615	-1095	2 X 15	-0215	-0375	-0535	-1015
	2 X 16	-0296	-0456	-0616	-1096	2 X 16	-0216	-0376	-0536	-1016
	2 X 17	-0297	-0457	-0617	-1097	2 X 17	-0217	-0377	-0537	-1017
	2 X 18	-0298	-0458	-0618	-1098	2 X 18	-0218	-0378	-0538	-1018
	2 X 19	-0299	-0459	-0619	-1099	2 X 19	-0219	-0379	-0539	-1019
	2 X 20	-0300	-0460	-0620	-1100	2 X 20	-0220	-0380	-0540	-1020
	2 X 21	-0301	-0461	-0621	-1101	2 X 21	-0221	-0381	-0541	-1021
	2 X 22	-0302	-0462	-0622	-1102	2 X 22	-0222	-0382	-0542	-1022
	2 X 23	-0303	-0463	-0623	-1103	2 X 23	-0223	-0383	-0543	-1023
	2 X 24	-0304	-0464	-0624	-1104	2 X 24	-0224	-0384	-0544	-1024
	2 X 25	-0305	-0465	-0625	-1105	2 X 25	-0225	-0385	-0545	-1025
	2 X 26	-0306	-0466	-0626	-1106	2 X 26	-0226	-0386	-0546	-1026
	2 X 27	-0307	-0467	-0627	-1107	2 X 27	-0227	-0387	-0547	-1027
	2 X 28	-0308	-0468	-0628	-1108	2 X 28	-0228	-0388	-0548	-1028
	2 X 29	-0309	-0469	-0629	-1109	2 X 29	-0229	-0389	-0549	-1029
	2 X 30	-0310	-0470	-0630	-1110	2 X 30	-0230	-0390	-0550	-1030
	2 X 31	-0311	-0471	-0631	-1111	2 X 31	-0231	-0391	-0551	-1031
	2 X 32	-0312	-0472	-0632	-1112	2 X 32	-0232	-0392	-0552	-1032
	2 X 33	-0313	-0473	-0633	-1113	2 X 33	-0233	-0393	-0553	-1033
	2 X 34	-0314	-0474	-0634	-1114	2 X 34	-0234	-0394	-0554	-1034
	2 X 35	-0315	-0475	-0635	-1115	2 X 35	-0235	-0395	-0555	-1035
	2 X 36	-0316	-0476	-0636	-1116	2 X 36	-0236	-0396	-0556	-1036
	2 X 37	-0317	-0477	-0637	-1117	2 X 37	-0237	-0397	-0557	-1037
	2 X 38	-0318	-0478	-0638	-1118	2 X 38	-0238	-0398	-0558	-1038
	2 X 39	▼ -0319	▼ -0479	▼ -0639	▼ -1119	2 X 39	▼ -0239	▼ -0399	▼ -0559	▼ -1039
	2 X 40	90122-0320	90122-0480	90122-0640	90122-1120	2 X 40	90122-0240	90122-0400	90122-0560	90122-1040

DIM C (± 0.20)
 $\pm .008$
(6.75)
.266

DIM D (± 0.25)
 $\pm .010$
(2.90)
.114

DIM C (± 0.20)
 $\pm .008$
(5.75)
.226


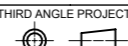
DIM D (± 0.25)
 $\pm .010$
(2.90)
.114

NOTES:
FOR PLATING VARIATIONS SEE
ENG.STD. SDES-99000-0003.

THIS DRAWING CONTAINS INFORMATION THAT IS PROPRIETARY TO MOLEX ELECTRONIC TECHNOLOGIES, LLC AND SHOULD NOT BE USED WITHOUT WRITTEN PERMISSION									
DIMENSION UNITS		SCALE		CURRENT REV DESC:				molex	
mm		NTS							
GENERAL TOLERANCES (UNLESS SPECIFIED)				EC NO: 804652				C-GRID III DUAL ROW RIGHT ANGLE HEADER	
				DRWN: SUAIFR 2024/11/19					
4 PLACES		±		CHK'D: SUAIFR 2024/11/19				PRODUCT CUSTOMER DRAWING	
3 PLACES		±		APPR: ISHWARG 2024/11/19					
2 PLACES		± 0.05 ± 0.002		INITIAL REVISION:				DOCUMENT NUMBER	
1 PLACE		±		DRWN: DB 16/07/87				SDA-90122	
0 PLACES		±		APPR: DB 1987/07/16				PSD 001 M4	
ANGULAR TOL		± °		THIRD ANGLE PROJECTION		DRAWING		SERIES	
				A3-SIZE		90122		MATERIAL NUMBER	
DRAFT WHERE APPLICABLE MUST REMAIN WITHIN DIMENSIONS				CUSTOMER		GENERAL MARKET		SHEET NUMBER	
								5 OF 6	

10		9		8		7		6		5		4		3		2		1		
		CIRCUIT SIZE	PLATING TYPE B PART NO.	PLATING TYPE C PART NO.	PLATING TYPE D PART NO.	PLATING TYPE G PART NO.			PLATING TYPE B PART NO.	PLATING TYPE C PART NO.	PLATING TYPE D PART NO.	PLATING TYPE G PART NO.			PLATING TYPE B PART NO.	PLATING TYPE C PART NO.	PLATING TYPE D PART NO.	PLATING TYPE G PART NO.		
F	DIM C (±0.20) ±.008 (5.75) .226	2 X 1	90122-0241	90122-0401	90122-0561	90122-1041			90122-0321	90122-0481	90122-0641	90122-1121			90122-0321	90122-0481	90122-0641	90122-1121		
		2 X 2	▲ -0242	▲ -0402	▲ -0562	▲ -1042			▲ -0322	▲ -0482	▲ -0642	▲ -1122			▲ -0322	▲ -0482	▲ -0642	▲ -1122		
		2 X 3	-0243	-0403	-0563	-1043			-0323	-0483	-0643	-1123			-0323	-0483	-0643	-1123		
		2 X 4	-0244	-0404	-0564	-1044			-0324	-0484	-0644	-1124			-0324	-0484	-0644	-1124		
		2 X 5	-0245	-0405	-0565	-1045			-0325	-0485	-0645	-1125			-0325	-0485	-0645	-1125		
		2 X 6	-0246	-0406	-0566	-1046			-0326	-0486	-0646	-1126			-0326	-0486	-0646	-1126		
		2 X 7	-0247	-0407	-0567	-1047			-0327	-0487	-0647	-1127			-0327	-0487	-0647	-1127		
		2 X 8	-0248	-0408	-0568	-1048			-0328	-0488	-0648	-1128			-0328	-0488	-0648	-1128		
		2 X 9	-0249	-0409	-0569	-1049			-0329	-0489	-0649	-1129			-0329	-0489	-0649	-1129		
		E	DIM C (±0.20) ±.008 (6.75) .266	2 X 10	-0250	-0410	-0570	-1050			-0330	-0490	-0650	-1130			-0330	-0490	-0650	-1130
2 X 11	-0251			-0411	-0571	-1051			-0331	-0491	-0651	-1131			-0331	-0491	-0651	-1131		
2 X 12	-0252			-0412	-0572	-1052			-0332	-0492	-0652	-1132			-0332	-0492	-0652	-1132		
2 X 13	-0253			-0413	-0573	-1053			-0333	-0493	-0653	-1133			-0333	-0493	-0653	-1133		
2 X 14	-0254			-0414	-0574	-1054			-0334	-0494	-0654	-1134			-0334	-0494	-0654	-1134		
2 X 15	-0255			-0415	-0575	-1055			-0335	-0495	-0655	-1135			-0335	-0495	-0655	-1135		
2 X 16	-0256			-0416	-0576	-1056			-0336	-0496	-0656	-1136			-0336	-0496	-0656	-1136		
2 X 17	-0257			-0417	-0577	-1057			-0337	-0497	-0657	-1137			-0337	-0497	-0657	-1137		
2 X 18	-0258			-0418	-0578	-1058			-0338	-0498	-0658	-1138			-0338	-0498	-0658	-1138		
2 X 19	-0259			-0419	-0579	-1059			-0339	-0499	-0659	-1139			-0339	-0499	-0659	-1139		
D	DIM D (±0.25) ±.010 (4.50) .177	2 X 20	-0260	-0420	-0580	-1060			-0340	-0500	-0660	-1140			-0340	-0500	-0660	-1140		
		2 X 21	-0261	-0421	-0581	-1061			-0341	-0501	-0661	-1141			-0341	-0501	-0661	-1141		
		2 X 22	-0262	-0422	-0582	-1062			-0342	-0502	-0662	-1142			-0342	-0502	-0662	-1142		
		2 X 23	-0263	-0423	-0583	-1063			-0343	-0503	-0663	-1143			-0343	-0503	-0663	-1143		
		2 X 24	-0264	-0424	-0584	-1064			-0344	-0504	-0664	-1144			-0344	-0504	-0664	-1144		
		2 X 25	-0265	-0425	-0585	-1065			-0345	-0505	-0665	-1145			-0345	-0505	-0665	-1145		
		2 X 26	-0266	-0426	-0586	-1066			-0346	-0506	-0666	-1146			-0346	-0506	-0666	-1146		
		2 X 27	-0267	-0427	-0587	-1067			-0347	-0507	-0667	-1147			-0347	-0507	-0667	-1147		
		2 X 28	-0268	-0428	-0588	-1068			-0348	-0508	-0668	-1148			-0348	-0508	-0668	-1148		
		2 X 29	-0269	-0429	-0589	-1069			-0349	-0509	-0669	-1149			-0349	-0509	-0669	-1149		
C		2 X 30	-0270	-0430	-0590	-1070			-0350	-0510	-0670	-1150			-0350	-0510	-0670	-1150		
		2 X 31	-0271	-0431	-0591	-1071			-0351	-0511	-0671	-1151			-0351	-0511	-0671	-1151		
		2 X 32	-0272	-0432	-0592	-1072			-0352	-0512	-0672	-1152			-0352	-0512	-0672	-1152		
		2 X 33	-0273	-0433	-0593	-1073			-0353	-0513	-0673	-1153			-0353	-0513	-0673	-1153		
		2 X 34	-0274	-0434	-0594	-1074			-0354	-0514	-0674	-1154			-0354	-0514	-0674	-1154		
		2 X 35	-0275	-0435	-0595	-1075			-0355	-0515	-0675	-1155			-0355	-0515	-0675	-1155		
		2 X 36	-0276	-0436	-0596	-1076			-0356	-0516	-0676	-1156			-0356	-0516	-0676	-1156		
		2 X 37	-0277	-0437	-0597	-1077			-0357	-0517	-0677	-1157			-0357	-0517	-0677	-1157		
		2 X 38	-0278	-0438	-0598	-1078			-0358	-0518	-0678	-1158			-0358	-0518	-0678	-1158		
		2 X 39	▼ -0279	▼ -0439	▼ -0599	▼ -1079			▼ -0359	▼ -0519	▼ -0679	▼ -1159			▼ -0359	▼ -0519	▼ -0679	▼ -1159		
B		2 X 40	90122-0280	90122-0440	90122-0600	90122-1080			90122-0360	90122-0520	90122-0680	90122-1160			90122-0360	90122-0520	90122-0680	90122-1160		

NOTES:
FOR PLATING VARIATIONS SEE
ENG.STD. SDES-99000-0003.

THIS DRAWING CONTAINS INFORMATION THAT IS PROPRIETARY TO MOLEX ELECTRONIC TECHNOLOGIES, LLC AND SHOULD NOT BE USED WITHOUT WRITTEN PERMISSION															
DIMENSION UNITS		SCALE		CURRENT REV DESC:											
mm		NTS													
GENERAL TOLERANCES (UNLESS SPECIFIED)				EC NO: 804652		DRWN: SUAIFR		2024/11/19		C-GRID III DUAL ROW RIGHT ANGLE HEADER					
				CHK'D: SUAIFR		2024/11/19									
				APPR: ISHWARG		2024/11/19		PRODUCT CUSTOMER DRAWING							
				INITIAL REVISION:											
1 PLACE ±				DRWN: DB		16/07/87		DOCUMENT NUMBER		DOC TYPE		DOC PART		REVISION	
0 PLACES ±				APPR: DB		1987/07/16		SDA-90122		PSD		001		M4	
ANGULAR TOL ± °				THIRD ANGLE PROJECTION		DRAWING		SERIES		MATERIAL NUMBER		CUSTOMER		SHEET NUMBER	
DRAFT WHERE APPLICABLE MUST REMAIN WITHIN DIMENSIONS						A3-SIZE		90122		SEE TABLE		GENERAL MARKET		6 OF 6	