

4

3

2

1

THIS DRAWING IS UNPUBLISHED.

RELEASED FOR PUBLICATION

© COPYRIGHT

ALL RIGHTS RESERVED.

LOC

DIST


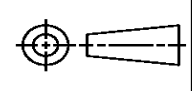
REVISIONS

| P | LTR | DESCRIPTION   | DATE      | DWN | APVD |
|---|-----|---------------|-----------|-----|------|
|   | B1  | ECR-14-003640 | 12MAR2014 | GK  | HMR  |
|   |     |               |           |     |      |
|   |     |               |           |     |      |
|   |     |               |           |     |      |

REPLACED BY OCEAN STYLE APPLICATOR PART  
NUMBER 2150198-2

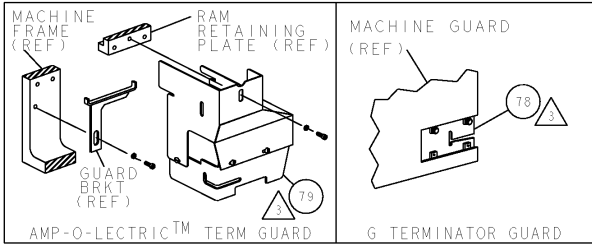
FOR REPLACEMENT PARTS FOR APPLICATOR 1855112  
REFER TO ADDITIONAL PAGE(S). SPARE PARTS KIT (IF LISTED)  
WILL REMAIN AVAILABLE.

THE REPLACEMENT OCEAN STYLE APPLICATOR HAS THE  
SAME TERMINATOR/PRESS INTERFACE AS APPLICATOR  
1855112

|   |  |  |                  |                              |   |              |           |            |               |
|---|--|--|------------------|------------------------------|---|--------------|-----------|------------|---------------|
| THIS DRAWING IS A CONTROLLED DOCUMENT.  |  | DWN                                    | GOPALAKRISHNA HV |                              |  TE Connectivity |              |           |            |               |
| DIMENSIONS:   |  | CHK                                    | RAGHAVENDRA      |                              |   |              |           |            |               |
|  |  | TOLERANCES UNLESS OTHERWISE SPECIFIED: |                  | NAME                         |   |              |           |            |               |
|   |  | 0 PLC ±                                |                  | END FEED HDM APPLICATOR FINE |   |              |           |            |               |
|   |  | 1 PLC ±                                |                  | ADJUST                       |   |              |           |            |               |
| 2 PLC ±   |  | APVD                                   |                  | RAGHAVENDRA                  |   | SIZE         | CAGE CODE | DRAWING NO | RESTRICTED TO |
| 3 PLC ±   |  | PRODUCT SPEC                           |                  |                              |   |              |           |            |               |
| 4 PLC ±   |  | APPLICATION SPEC                       |                  | A3                           |   |              |           |            |               |
| ANGLES ±  |  | WEIGHT                                 |                  | C= 1855112                   |   |              |           |            |               |
| FINISH  |  | CUSTOMER DRAWING                       |                  | SCALE                        |   | SHEET 1 OF 2 |           | REV B1     |               |

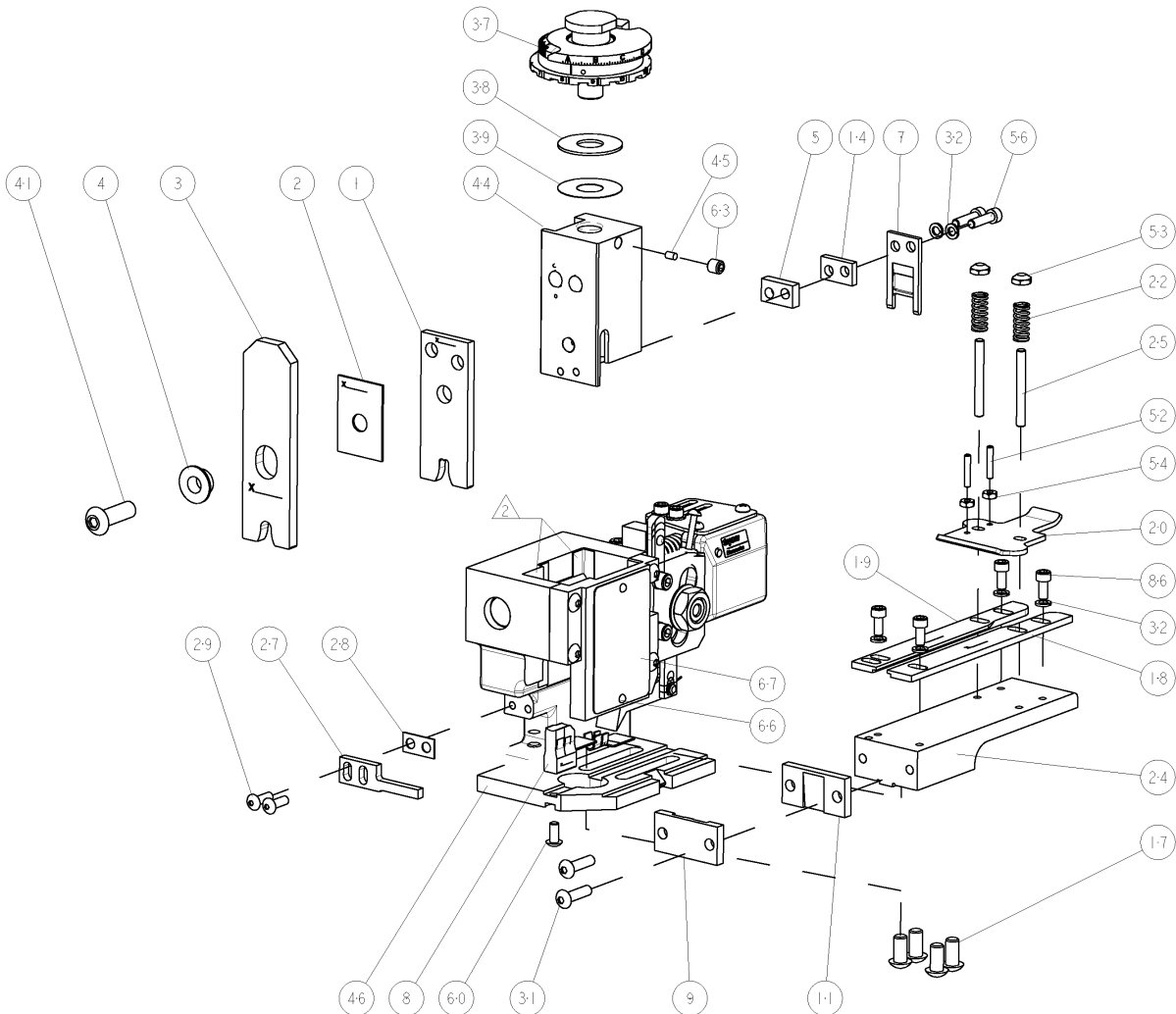
|   |  |     |               |                          |                              |  |           |    |  |  |  |
|---|--|-----|---------------|--------------------------|------------------------------|--|-----------|----|--|--|--|
| 8   |  |     |               | 7                        |                              |  |           |    |  |  |  |
| THIS DRAWING IS UNPUBLISHED.                          |  |     |               | RELEASED FOR PUBLICATION |                              |  |           | 20 |  |  |  |
| BY TYCO ELECTRONICS CORPORATION. ALL RIGHTS RESERVED. |  |     |               |                          |                              |  |           |    |  |  |  |
| COPYRIGHT 20  |  |     |               |                          |                              |  |           |    |  |  |  |
| PART<br>NUMBER  |  | REV | FIRST<br>USED |                          | POWER UNIT                   |  | FEED TYPE |    |  |  |  |
| 1855112-1   |  | B   | 122500-1      |                          | LEADMAKER &<br>BENCH MODEL G |  | POST FEED |    |  |  |  |
| 1855112-2   |  | B   | 565435-5      |                          | BENCH MODEL K                |  | POST FEED |    |  |  |  |
| 7-1855112-7   |  | A   | -             |                          | SPARE PARTS                  |  | -         |    |  |  |  |

- 1 RECOMMENDED SPARE PARTS  
2 GREASE LIGHTLY  
3 GUARD MUST BE IN PLACE WHEN OPERATING APPLICATOR IN A BENCH MACHINE

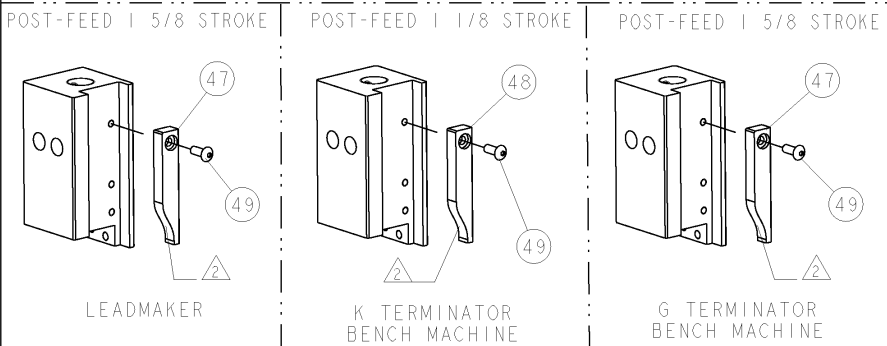


|                               |        |                                |                        |                            |                      |
|-------------------------------|--------|--------------------------------|------------------------|----------------------------|----------------------|
| TERMINAL NAME: TERMINAL, RING |        |                                |                        |                            |                      |
| -                             | 41124  | AMP TERMINAL - AMP CRIMP SPECS |                        |                            |                      |
| -                             | 41125  |                                |                        |                            |                      |
| -                             | 41126  | REF SETTINGS                   | CRIMP HEIGHT           | WIRE SIZE                  |                      |
| -                             | 42722  | B2                             | .121±.002[3.07±0.05mm] | 10 AWG                     |                      |
| -                             | 42723  | D5                             | .109±.002[2.77±0.05mm] | 12 AWG                     |                      |
| -                             | 42724  | -                              | -                      | -                          |                      |
| -                             | 640009 | -                              | -                      | -                          |                      |
| -                             | 640010 | CRIMP                          | SIZE                   | TYPE                       | RANGE                |
| -                             | 640216 |                                |                        |                            |                      |
| -                             | 62691  | WIRE                           | .210 [5.33mm]          | F                          | 12-10 AWG            |
| -                             | -      | INSUL                          | .250 [6.35mm]          | O                          | Ø.150-.210           |
| WIRE STRIP LENGTH .197 -.212  |        | TERM APPL SPEC 114-2084        | FEED 1.150             | APPL INSTRUCTIONS 408-8039 | SET UP GAGE 458638-1 |

| LOC |  | DIST |  | REVISIONS |     |               |           |     |      |
|-----|--|------|--|-----------|-----|---------------|-----------|-----|------|
| A   |  | 66   |  | P         | LTR | DESCRIPTION   | DATE      | OWN | APPR |
|     |  |      |  | A         |     | RELEASED      | 10AUG2006 | BH  | BH   |
|     |  |      |  | B         |     | ECR-08-016064 | 24JUN2008 | MY  | GB   |
|     |  |      |  |           |     |               |           |     |      |
|     |  |      |  |           |     |               |           |     |      |



|   |     |     |    |             |                                      |    |
|---|-----|-----|----|-------------|--------------------------------------|----|
| - | 4   | 4   | -  | 2-21000-6   | SCR, SKT HD CAP 8-32 X .375          | 86 |
| - | REF | -   | .. | 455745-1    | GUARD WINDOW                         | 79 |
| - | -   | REF | .. | 679532-1    | INSERT, GUARD                        | 78 |
| - | 1   | 1   | -  | 217238-1    | GENERAL INSTRUCTION PKG              | 72 |
| - | 1   | 1   | -  | 4088039     | EF APPL INST 408-8039                | 71 |
| - | 1   | 1   | -  | 461264-5    | PLATE, IDENTIFICATION                | 67 |
| - | 2   | 2   | -  | 21017-2     | SCREW, DRIVE                         | 66 |
| - | 1   | 1   | -  | 21009-2     | SCR, SET, SELF LOCKING 1/4-20 X .250 | 63 |
| - | 1   | 1   | -  | 22733-8     | SCR, BHSC, SELF-LOCKING, 8-32 X .375 | 60 |
| - | 2   | 2   | -  | 2-21000-8   | SCR, SKT HD CAP 8-32 X .625          | 56 |
| - | 2   | 2   | -  | 21018-4     | NUT, HEX, REG 4-40                   | 54 |
| - | 2   | 2   | -  | 21022-2     | NUT, LOCK, HEX, TORQUE, 8-32         | 53 |
| - | 2   | 2   | -  | 2-21006-6   | SCR, SET, CUP POINT 4-40 X .625      | 52 |
| - | 1   | 1   | .. | 1-21002-7   | SCR, BTN SKT CAP 6-32 X .375         | 49 |
| - | 1   | -   | .. | 690501-3    | CAM, POST FEED, 1 1/8                | 48 |
| - | -   | 1   | -  | 690501-4    | CAM, POST-FEED 1 5/8                 | 47 |
| - | 1   | 1   | -  | 458980-3    | SUB ASSY, APPLICATOR FRAME           | 46 |
| - | 1   | 1   | -  | 690191-1    | PLUG,NYLON                           | 45 |
| - | 1   | 1   | -  | 1-455674-3  | RAM                                  | 44 |
| - | 1   | 1   | -  | 690686-1    | CRIMPER, BOLT SPECIAL                | 41 |
| - | 1   | 1   | -  | 690125-1    | SHIM SUB-ASSY                        | 39 |
| - | 1   | 1   | -  | 1-469367-1  | SHIM                                 | 38 |
| - | 1   | 1   | -  | 879103-2    | FINE ADJUST HEAD SUBASSY             | 37 |
| - | 6   | 6   | -  | 21024-4     | WASHER, SPRG LOCK, REG NO 8          | 32 |
| - | 2   | 2   | -  | 2-21002-9   | SCR, BTN SKT HD CAP 10-32 X .750     | 31 |
| - | 2   | 2   | -  | 2-21002-2   | SCR, BTN SKT HD CAP 8-32 X .500      | 29 |
| - | 1   | 1   | -  | 1-690451-7  | SPACER, STRIPPER                     | 28 |
| - | 1   | 1   | -  | 690455-3    | STRIPPER, FRONT CASTING              | 27 |
| - | 2   | 2   | -  | 22354-8     | STUD, THREADED                       | 25 |
| - | 1   | 1   | -  | 455678-1    | PLATE, STRIP GUIDE                   | 24 |
| - | 2   | 2   | -  | 4-22281-1   | SPRING, DRAG                         | 22 |
| - | 1   | 1   | -  | 454177-1    | DRAG                                 | 20 |
| - | 1   | 1   | -  | 1-458030-0  | STRIP GUIDE, REAR                    | 19 |
| - | 1   | 1   | -  | 1-458031-0  | STRIP GUIDE, FRONT                   | 18 |
| - | 4   | 4   | -  | 3-21002-3   | SCR, BTN SKT HD CAP 1/4-20 X .500    | 17 |
| - | 1   | 1   | -  | 4-240641-6  | SPACER                               | 14 |
| - | 1   | 1   | -  | 240644-1    | PLATE, REAR SHEAR                    | 11 |
| - | 1   | 1   | -  | 690482-3    | PLATE, FRONT SHEAR                   | 9  |
| - | 1   | 1   | -  | 1-461295-4  | ANVIL, COMBINATION                   | 8  |
| - | 1   | 1   | -  | 690474-3    | BLADE, SLUG                          | 7  |
| - | 1   | 1   | -  | 2-240641-9  | SPACER                               | 5  |
| - | 1   | 1   | -  | 238009-7    | BLOCK, FL CRIMPER SPACER             | 4  |
| - | 1   | 1   | -  | 7-1583690-9 | CRIMPER, INSUL O                     | 3  |
| - | 1   | 1   | -  | 455888-8    | SPACER, CRIMPER                      | 2  |
| - | 1   | 1   | -  | 456430-1    | CRIMPER, WIRE                        | 1  |



**\*WARNING :**  
ON INSTALLATION, SET WIRE DISC TO LARGEST WIRE SIZE SETTING. USE OF SETTINGS BELOW MIN REQUIRED CRIMP HEIGHT SETTING WILL CAUSE DAMAGE TO CRIMP TOOLING.

|  |  |     |  |         |  |             |  |  |  |         |  |
|--|--|-----|--|---------|--|-------------|--|--|--|---------|--|
| -77 -2 -1  |  | U/M |  | PART NO |  | DESCRIPTION |  |  |  | ITEM NO |  |
| FIG 1 IS CONTROL - 2 CONTROLLER FOR THE SYSTEM. THE CONTROLLER IS OPERATIONAL. THE |  |     |  |         |  |             |  |  |  |         |  |