

# ChipMax

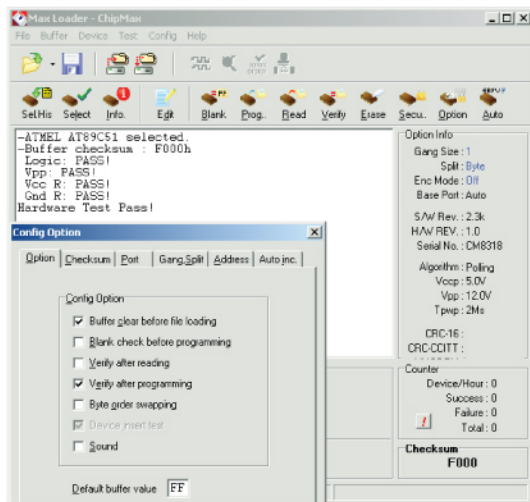
**ChipMax** is a cost-effective, high quality industrial-grade device programmer with parallel-port interface that is suitable for most programming needs without using any extraneous personal family modules.

## PRODUCT HIGHLIGHTS

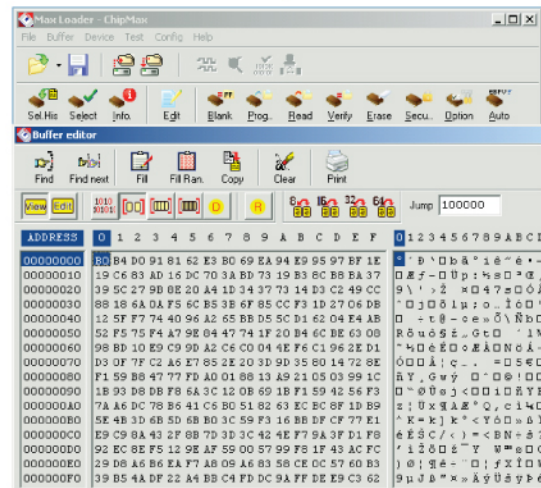
- 40-pin Low Cost Universal Device Programmer
- Supports PC parallel port
- Win95/98/NT/2000/XP
- External AC power transformer

## KEY FEATURES

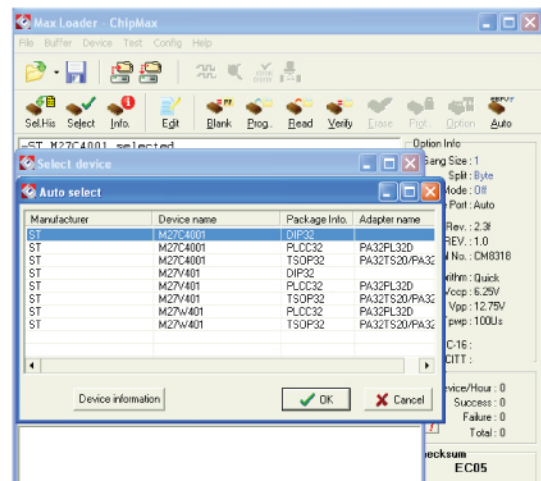
- Flexible and easy to use menu-driven software.
- Auto search device select function supports E(E)PROMs & Microcontrollers.
- Device insertion test identifies improperly inserted device before programming.
- Device Operations: Read, Blank check, Program, Verify, Checksum, Data compare, Security, Auto(blank check-program-verify).
- Support User-changeable programming parameters.
- Built-in editor for both buffer data and test vectors.



- Support JEDEC, Intel Hex, Motorola S Records, Tekhex, and binary file formats with Load, Edit, and Save commands.
- Distribution of 16- and 32- bit data into 8-bit portions.
- Automatically configures for host parallel port(LPT1,LPT2,LPT3)



- On-board FPGA for extremely fast communication.
- Current limiting protects hardware circuit from improperly inserted or defective chips and operation errors.
- Standard 40-pin ZIF(Zero Insertion Force) socket accepts both 300mil and 600 mil DIP devices up to 40 pins.
- Enable/Disable Byte Order Swapping for 16bit Motorola file format
- Hardware diagnostic program exams all 40-pin drivers before using programmer.
- Display programming parameters on the screen.
- Set device/buffer address ranges before programming devices.
- Extensive on-line F1 help system provides text and graphics.
- Auto Programming for production programming.



# ChipMax



## DEVICES PROGRAMMED

- EPROM
  - 2716 - 27C080/801 (8bit)
  - 27C1000 - 27C8000 (8bit)
  - 27C210 - 27C240 (16bit)
  - 27C1024 - 27C4096 (16bit)
- FLASH
  - 28Fxxx, 29Fxxx
  - 29LVxxx, 29BVxxx
  - 29Wxxx, 49Fxxx
- PROMAtmel 27HCxxx, ICT27CXxxx, WSI 57Cxx
- MICROCONTROLLER
  - AMD 87Cxx, Intel 87C5x, Phillips 87Cxx
  - Atmel AT89Cxx, 89Sxx, 89LVxx
  - Dallas 87C5xx, ISSI IS89Cxx, LG 97Cxx
  - Microchip PIC12Cxx/16Cxx
  - TEMIC TSC87Cxx,
- SERIAL (E)PROM
  - 17xx, 24Cxx, 32xx, 33xx,
  - 35xx, 59xx, 93Cxx, 94Cxx Series
- PALCE
  - AMD PALCE16V8, 20V8
- GAL
  - Lattice/NS/ SGS GAL16V8, 20V8
- ATF
  - ATMEL ATF16V8, 20V8

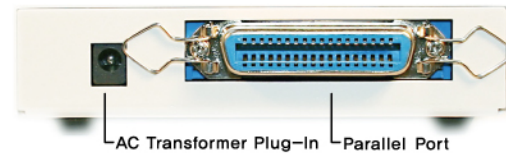
## TECHNICAL SPECIFICATION

### Dimension :

- Module : 7.25"(L) x 5.00"(W) x 1.25"(H) (Perfect size for briefcase)
- Weight : 2.5 lbs

**PC Host Interface :** A standard parallel port (LPT1, LPT2, LPT3)

**Built-in Socket :** Textool 40 pin ZIF(300/600 mil) standard.



## SYSTEM REQUIREMENT

- TYPE:
  - IBM PC XT, AT, 386, 486, PS/2, Pentium, portable(Laptop)
  - Or compatibles.
- A hard disk drive is recommended for software installation.
- RAM size: 512K
- I/O PORT: Parallel Port

## SAFETY STANDARD

- CE compliant

## STANDARD ACCESSORIES

- AC/DC Adapter(110 or 240 VAC)
- Print Cable
- Software CD and User's Guide

# Mouser Electronics

Authorized Distributor

Click to View Pricing, Inventory, Delivery & Lifecycle Information:

EETools:

CHIPMAX