

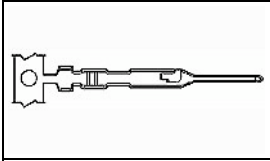


Have a Question?
Chat with a Product
Information Specialist

What can we help you find?

5-104506-7 Product Details

Share Print Email



5-104506-7

TE Internal Number: 5-104506-7
 Active

Contacts-AMPMODU Machine Applied

Always EU RoHS/ELV Compliant (Statement of Compliance)

Product Highlights:

- Pin
- Contact Configuration = MTE (IDC)
- Wire Range = 0.03-0.09² [32-28] mm [AWG]
- Wire Insulation Diameter = .64 - 1.37 mm
- Standard Applied Pressure

[View all Features](#)

Quick Links

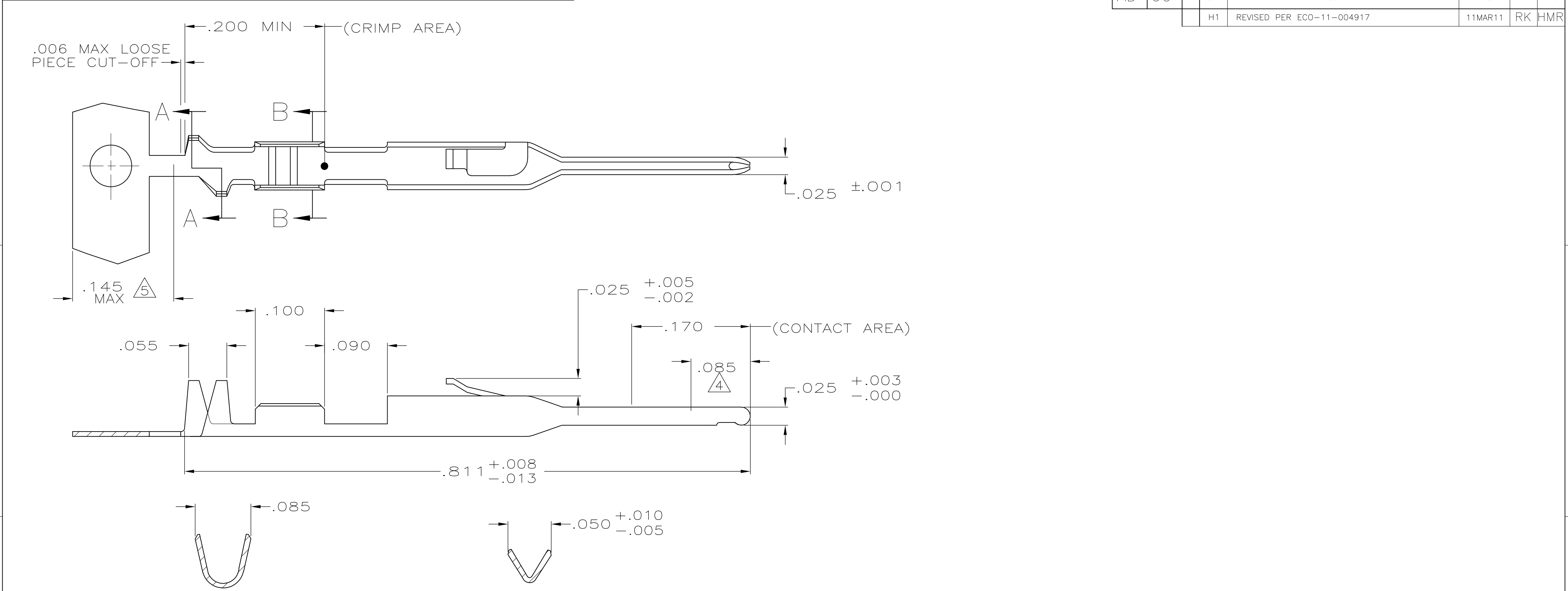
- [Pricing & Availability](#)
- [Search for Tooling](#)
- [Product Feature Selector](#)
- [Contact Us About This Product](#)

[Add to My Part List](#) [Request Sample](#) [Find Similar Products](#) [Buy Product](#)

Documentation & Additional Information	
Documents are temporarily unavailable. We are working hard to correct the problem. Please try again later.	Additional Information: <ul style="list-style-type: none">• Product Line Information Related Products: <ul style="list-style-type: none">• Tooling

Product Features (Please use the Product Drawing for all design activity)	
Product Type Features: <ul style="list-style-type: none">• Pin/Socket = Pin• Wire Insulation Diameter (mm [in]) = 0.64 - 1.37 [0.025 - 0.054]• Applied Pressure = Standard• Termination Method to Wire/Cable = Crimp Electrical Characteristics: <ul style="list-style-type: none">• Voltage Rating (VAC) = 300• Contact - Rated Current (A) = 3• Termination Resistance (mΩ) = 12• Insulation Resistance (MΩ) = 5,000• Dielectric Withstanding Voltage (V) = 750 Termination Features: <ul style="list-style-type: none">• Solder Tail Contact Plating = Tin over Nickel Body Features: <ul style="list-style-type: none">• Wire Range (mm [AWG]) = 0.03-0.09² [32-28]	Contact Features: <ul style="list-style-type: none">• Contact Configuration = MTE (IDC)• Contact Base Material = Phosphor Bronze• Contact Plating, Mating Area, Material = Gold (30) Industry Standards: <ul style="list-style-type: none">• RoHS/ELV Compliance = RoHS compliant, ELV compliant• Lead Free Solder Processes = Not relevant for lead free process• RoHS/ELV Compliance History = Always was RoHS compliant• Approved Standards = UL E28476, CSA LR7189 Environmental: <ul style="list-style-type: none">• Operating Temperature (°C) = -65 - +105 Packaging Features: <ul style="list-style-type: none">• Packaging Method = Loose Piece Other: <ul style="list-style-type: none">• Brand = AMP

LOC	DIST	REVISIONS					
		P	LTR	DESCRIPTION	DATE	DWN	APVD
AD	00		H1	REVISED PER ECO-11-004917	11MAR11	RK	HMR



SECTION A-A
INSULATION RANGE .054 MAX

SECTION B-B
WIRE RANGE #28-#32

- 1

.000100-.000200 BRIGHT TIN-LEAD OVER .000030 NICKEL ENTIRE CONTACT
- 2

.000015 GOLD IN CONTACT AREA, .000050-.000100 BRIGHT TIN-LEAD IN CRIMP AREA, ALL OVER .000030 NICKEL ENTIRE CONTACT
- 3

.000030 GOLD IN CONTACT AREA, .000050-.000100 BRIGHT TIN-LEAD IN CRIMP AREA, ALL OVER .000030 NICKEL ENTIRE CONTACT
- 4

POINT OF MEASUREMENT FOR PLATING THICKNESS
- 5

GOLD PLATING NOT REQUIRED IN THIS AREA
- 6

.000015 GOLD IN CONTACT AREA, .000050-.000100 BRIGHT TIN IN CRIMP AREA, ALL OVER .000030 NICKEL ENTIRE CONTACT.
- 7

PRELIMINARY PART - NOT RELEASED FOR PRODUCTION.
- 8

.000100-.000200 BRIGHT TIN OVER .000030 NICKEL ENTIRE CONTACT.
- 9

.000100-.000200 MATTE TIN OVER .000030 NICKEL ENTIRE CONTACT.
- 10

.000015 GOLD IN CONTACT AREA, .000050-.000100 MATTE TIN IN CRIMP AREA, ALL OVER .000030 NICKEL ENTIRE CONTACT
- 11

.000030 GOLD IN CONTACT AREA, .000050-.000100 MATTE TIN IN CRIMP AREA, ALL OVER .000030 NICKEL ENTIRE CONTACT

<div>11</div>	5-104506-7	5-104506-6
<div>10</div>	5-104506-5	5-104506-4
<div>9</div>	5-104506-3	5-104506-2
<div>8</div>	1-104506-1	1-104506-0
<div>6</div>	104506-9	104506-8
<div>3</div>	104506-7	104506-6
<div>2</div>	104506-5	104506-4
<div>1</div>	104506-3	104506-2
FINISH	LOOSE PIECE PART NUMBER	PART NUMBER

THIS DRAWING IS A CONTROLLED DOCUMENT.		DWN D KEITZER 12-14-88	<div>TE Connectivity</div>			
DIMENSIONS: INCHES		CHK S. SHUEY 12-15-88				
	TOLERANCES UNLESS OTHERWISE SPECIFIED:		APVD C.SINISI 12-16-88	NAME		
	0 PLC ± - 1 PLC ± - 2 PLC ± - 3 PLC ± .005 4 PLC ± - ANGLES ± -		PRODUCT SPEC	PIN, AMP MODU, MTE		
	MATERIAL PHOS BRONZE		APPLICATION SPEC			
FINISH SEE TABLE		WEIGHT -	SIZE A2			RESTRICTED TO -
CUSTOMER DRAWING			CAGE CODE 00779	DRAWING NO C-104506	SCALE 10:1	SHEET 1 of 1
			REV H1			